



 **LJ Hooker**



Wakari, B/125 Rosebank Avenue

Tastefully appointed and ready now!

TO VIEW THIS PROPERTY: Please register to view by booking in or to register in order to be notified of next the viewing time and day set. Please do this by copying and pasting the link below into your web browser and registering your interest. You can also apply for the property after viewing it here also. <https://apply.tenant.co.nz/6534033>

Tastefully renovated throughout and to a high standard, this very spacious, two bedroom unit gets amazing sun and large windows fill the spaces with light, all of which have lovely views over the city and beyond. Tasteful colours, design features and blinds all combine to make this a very trendy and cleverly appointed home and being the front unit also gives extra privacy. The new and tastefully designed kitchen opens on too a large open plan dining and living area area which is bright and light, ready for you to sit and relax. The home also benefits from some double glazing and a large heat-pump. A large primary bedroom upstairs with a spacious wardrobe sees your sleeping and storage needs catered too and the other double bedroom, also upstairs is lovely and sunny again with a wardrobe



Disclaimer: All information contained therein is gathered from relevant third parties sources. We cannot guarantee or give any warranty about the information provided. Interested parties must rely solely on their own enquiries.

2 

1 

1 

For Lease
Please Call

View
[ljhooker.co.nz/3PX6GDS](https://l.jhooker.co.nz/3PX6GDS)

Contact
Nathan Dickson
027 214 7265
nathan@ljhdunedin.co.nz

LJ Hooker Dunedin
(03) 470 1370
Wayne Graham Realty Ltd

for that added storage. A new bathroom has been installed as well resulting in a what is virtually a new home inside.

Outside, a single garage and a private fenced courtyard are there to call your own.

Located in a highly desirable suburb, close to the golf course too tee off after work or head to No 7 for a coffee or a wee drink, or equally whip down the hill to town in a mater of minutes.

Suitable for a single or a couple this is a perfect wee lock and leave!

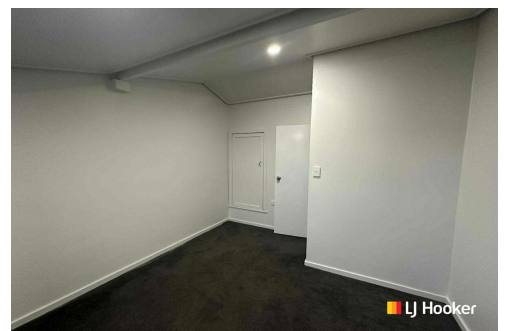
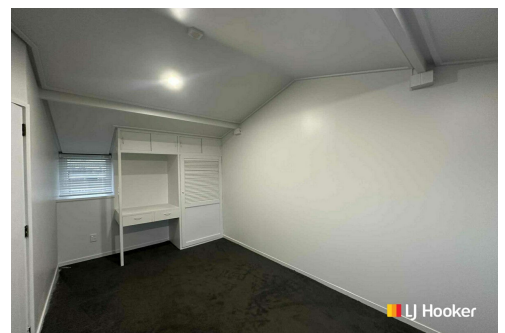
No pets

More About this Property

Property ID	3PX6GDS
Property Type	Flat
Licensed Real Estate Agents (REAA2008)	

Nathan Dickson 027 214 7265
Leasing Agent | nathan@ljhdunedin.co.nz

LJ Hooker Dunedin (03) 470 1370
Wayne Graham Realty Ltd
63 Musselburgh Rise, DUNEDIN 9013
dunedin@ljhooker.co.nz | dunedin@ljhdunedin.co.nz



Disclaimer: All information contained therein is gathered from relevant third parties sources. We cannot guarantee or give any warranty about the information provided. Interested parties must rely solely on their own enquiries.

LJ Hooker Dunedin
(03) 470 1370
Wayne Graham Realty Ltd