

Waitoa, 648 No 1 Road

Country Cottage for Rent

Charming two-bedroom country cottage for rent. Features a spacious lounge with a woodburner fireplace, a bathroom with a bath, a separate open-plan kitchen and dining area, and a separate laundry. The property includes a low-maintenance yard and an open-front double garage. Located just 17 km from Morrinsville and close to all the factories.

Pets negotiable.

Available from 30/05/2025
Weekly rent is \$425, with a bond of \$1700, for a total move-in cost of \$2125.

2

1

2

For Lease
\$425 per week

View
By Appointment

Contact
Shannon Excell
027 5060403
rentals@ljhmo.co.nz

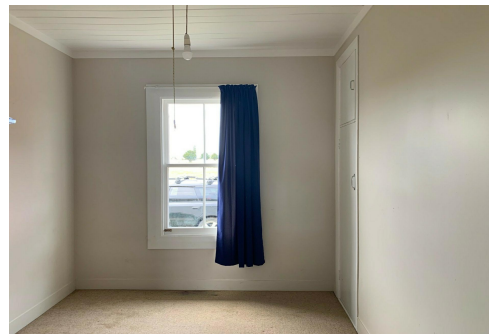


Disclaimer: All information contained therein is gathered from relevant third parties sources. We cannot guarantee or give any warranty about the information provided. Interested parties must rely solely on their own enquiries.

LJ Hooker Morrinsville
(07) 889 8015
Central Waikato Realty Limited

More About this Property

| | |
|--|--------|
| Property ID | FBWGEW |
| Property Type | House |
| Licensed Real Estate Agents (REAA2008) | |



Shannon Excell 027 5060403

Property Investment Manager | rentals@ljhmo.co.nz

LJ Hooker Morrinsville (07) 889 8015

Central Waikato Realty Limited

49 Studholme Street, MORRINSVILLE 3300

morrinsville.ljhooker.co.nz | office@ljhmo.co.nz



Disclaimer: All information contained therein is gathered from relevant third parties sources.

We cannot guarantee or give any warranty about the information provided. Interested parties must rely solely on their own enquiries.

LJ Hooker Morrinsville
(07) 889 8015
Central Waikato Realty Limited