




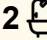
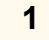
11D Exeter Street, Waimate

## Modern 4-Bedroom Home — Available Now

Completed in 2024, this stylish home features:

- Master suite with ensuite
- Family bathroom
- Open-plan lounge & dining flowing to deck
- Modern kitchen with walk-in pantry
- Heat pump & gas hot water
- Separate laundry & single garage
- No dogs

Perfect for comfortable, modern living with plenty of space to relax and entertain.

4  2  1 

### FOR RENT

Please Call

### AGENTS

Talia Holden

027 689 7974

rentals.waimate@ljhooker.co.nz

### AGENCY

LJ Hooker Waimate

(03) 689 7974

Enting Real Estate Limited

All information contained therein is gathered from relevant third parties sources.  
We cannot guarantee or give any warranty about the information provided.  
Interested parties must rely solely on their own enquiries.



Available now

To arrange a viewing or apply, please visit:

<https://waimate.ljhooker.co.nz/>

**Disclaimer:**

This information has been supplied by the owners and Corelogic. LJ Hooker Timaru, Geraldine and Waimate are merely passing over this information as supplied to us. We cannot guarantee its accuracy and reliability as we have not checked, audited or reviewed the information. All intending purchasers are advised to conduct their own due diligence investigation into this information. To the maximum extent permitted by law, we do not accept any responsibility to any part for the accuracy or use of the information herein. Enting Real Estate Limited Licensed (REAA 2008).

**MORE DETAILS**

Property ID                    8CSGNG  
Property Type                House  
**Licensed Real Estate Agents (REAA2008)**

**Talia Holden 027 689 7974**

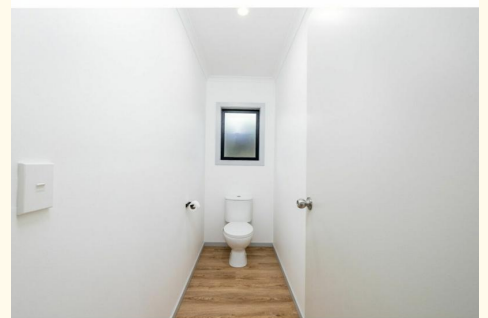
Property Manager | [rentals.waimate@ljhooker.co.nz](mailto:rentals.waimate@ljhooker.co.nz)

**LJ Hooker Waimate (03) 689 7974**

Enting Real Estate Limited

74 Queen Street, WAIMATE 7924

[waimate.ljhooker.co.nz](http://waimate.ljhooker.co.nz) | [Waimate@ljhooker.co.nz](mailto:Waimate@ljhooker.co.nz)





**TOTAL: 120 m<sup>2</sup>**  
**FLOOR 1: 120 m<sup>2</sup>**  
**EXCLUDED AREAS: GARAGE: 20 m<sup>2</sup>, DECK: 59 m<sup>2</sup>, LANDING: 7 m<sup>2</sup>**  
**WALLS: 10 m<sup>2</sup>**

Floor Plan Created By Cubicasa App. Measurements Deemed Highly Reliable But Not Guaranteed.



All information contained therein is gathered from relevant third parties sources.  
 We cannot guarantee or give any warranty about the information provided.  
 Interested parties must rely solely on their own enquiries.