

Virginia, 55 Emerald Circuit

Experience Modern Comfort in Virginia

3  2  2 

OPEN INSPECTION TIME: Click REQUEST INSPECTION button on website listing

Rent: \$550.00 Per week

Bond: \$2,200

Available Date: 02/06/2025

Owners Intent to Sell: No intent advised

12 Month Lease

Pets Negotiable

Smoking outside only

For Lease

\$550 per week

View

By Appointment

Contact

Wendy Page

wendy.page@ljhcs.com.au

Apply online at: www.2apply.com

You are welcome to complete an application form online prior to viewing.

Once you have signed up for an inspection time on the website listing, we will contact you



Disclaimer: All information contained therein is gathered from relevant third parties sources.

We cannot guarantee or give any warranty about the information provided. Interested parties must rely solely on their own enquiries.

**LJ Hooker Craigmore | Elizabeth |
Salisbury
(08) 8255 9555**

via text message with a viewing time.

Do not call for a viewing time; one will be allocated to you once you have signed up via the website.

There will be no exceptions to this process.

LJ Hooker Craigmores/Elizabeth/Craigmores welcomes you to inspect this stunning, near-new three-bedroom, two-bathroom residence perfectly situated in the serene suburb of Virginia. This home offers a harmonious blend of contemporary design and practical living.

Inside, you'll find:

- A spacious master bedroom with a private ensuite and built-in wardrobe.
- Two additional well-sized bedrooms, each featuring built-in robes.
- A light-filled, open-plan kitchen, dining, and living area —ideal for entertaining and everyday life.
- A thoughtfully designed kitchen boasting generous bench space and a convenient pantry.
- Year-round climate control with a split-system air conditioning unit.

Outside, the property offers:

- A substantial 2 car carport with an automatic door for secure and easy parking.
- Rear courtyard area for entertaining.

Location Highlights:

Nestled in a vibrant area, you'll be surrounded by local market gardens and handy shopping options. Families will appreciate the proximity to Virginia Primary School, Xavier College, and Edge Early Learning Childcare Centre. Enjoy leisure time at the nearby Virginia Grove Play Park and other community facilities.

Commuting is a breeze with readily available bus routes providing easy access to surrounding suburbs and the Adelaide CBD. Major road links are also close by, ensuring quick and convenient travel.

LJ Hooker Craigmores | Elizabeth | Salisbury: the number one Real Estate Agents / Sale Agents and Property Management in the Northern Suburbs of South Australia.

Specialists in: Andrews Farm, Angle Vale, Blakeview, Burton, Craigmores, Davoren Park, Elizabeth and surrounding, Gawler, Hillbank, Munno Para, One Tree Hill, Parafield, Para Hills, Paralowie, Salisbury, Smithfield.

Disclaimer:

We have in preparing this document used our best endeavours to ensure the information contained is true and accurate, but accept no responsibility and disclaim all liability in respect to any errors, omissions, inaccuracies or misstatements contained. Prospective tenants should make their own enquiries to verify the information contained in this document.

RLA155355



Disclaimer: All information contained therein is gathered from relevant third parties sources. We cannot guarantee or give any warranty about the information provided. Interested parties must rely solely on their own enquiries.

**LJ Hooker Craigmores | Elizabeth |
Salisbury
(08) 8255 9555**

More About this Property

Property ID	6779FDC
Property Type	House
Land Area	192 sqm

Wendy Page

Property Investment Department Manager | wendy.page@ljhces.com.au

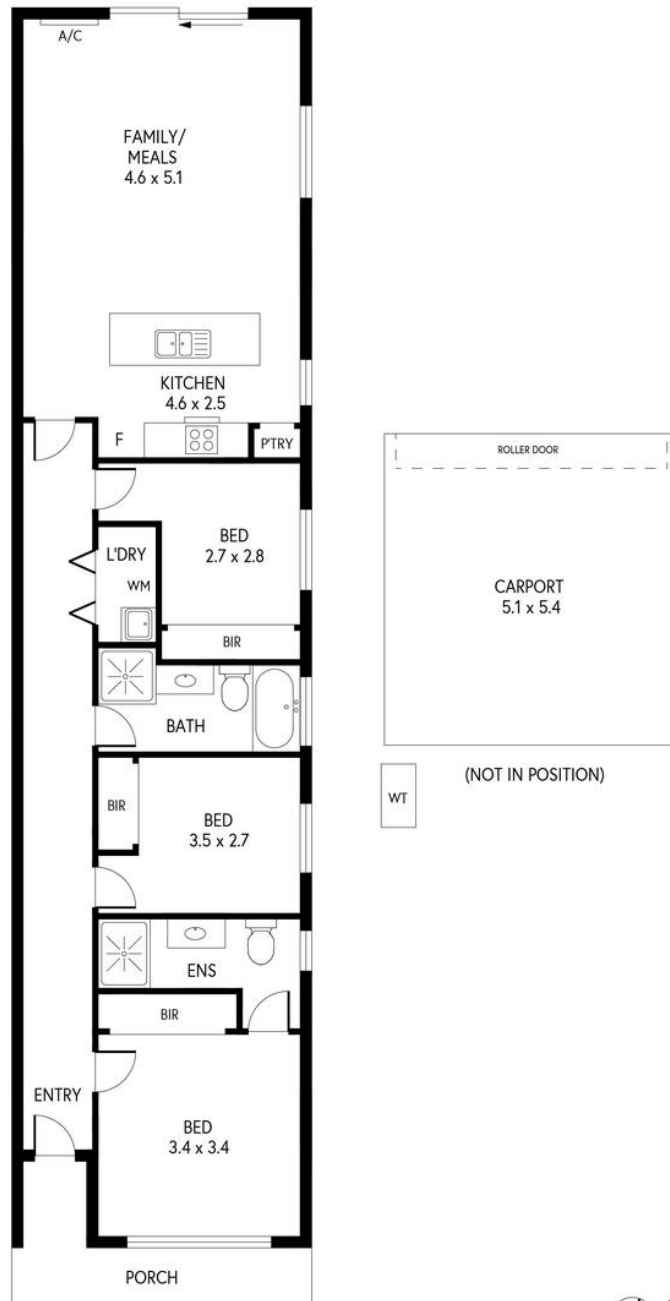
LJ Hooker Craigmore | Elizabeth | Salisbury (08) 8255 9555

Shop 17, Craigmore Village, Yorktown Road, CRAIGMORE SA 5114
craigmoreelizabeth.ljhooker.com.au | Office@ljhces.com.au



Disclaimer: All information contained therein is gathered from relevant third parties sources.
We cannot guarantee or give any warranty about the information provided. Interested parties must rely solely on their own enquiries.

**LJ Hooker Craigmore | Elizabeth |
Salisbury
(08) 8255 9555**



INTERNAL	- 97.0 SQM
EXTERNAL	- 33.7 SQM
TOTAL	- 130.7 SQM

PRODUCED BY CLIQUECREATIVE