



Victoria Park, 69 Sunbury Rd

Spring To Sunbury

3 2 2

For Lease

\$820 pw

View

By Appointment

Located in a quiet corner of Victoria Park you are still right in the heart of the city. Stroll to Vic Park Train Station or the Albany highway strip. Jump on the nearby cycle paths and safely transport your self into the City or anywhere else you would want to be. Take the dog for the walk around the Eagles training ground and exercise space. Miller street will take you out to Orrong road and across the city in no time. The options are limitless.

The home is climate controlled with ducted reverse cycle air conditioning, partially offset by solar panels. There is a theatre room and open planned living space giving you options or simply a retreat away from the kids. The three bedrooms have built in robes, the master with a walk in and the Garage has room for storage and more. There is an elaborate set up for tech options if you are techy. (Note they can be used but do not form part of the lease. Including security cameras and hard drive) There is a beautiful secluded courtyard for that evening chill time.



Disclaimer: All information contained therein is gathered from relevant third parties sources.

We cannot guarantee or give any warranty about the information provided. Interested parties must rely solely on their own enquiries.

**LJ Hooker Victoria Park | Belmont
(WA)
(08) 9473 7777**

Make sure you get down here to see a great home!

Key Features:

- * Ducted reverse cycle Air conditioning
- * Unrivalled central location
- * Access to the train and Multiple transport options.
- * Secure Garage access
- * Albany Highway strip is minutes walk away

- Unfurnished
- 6 or 12 months initial lease term

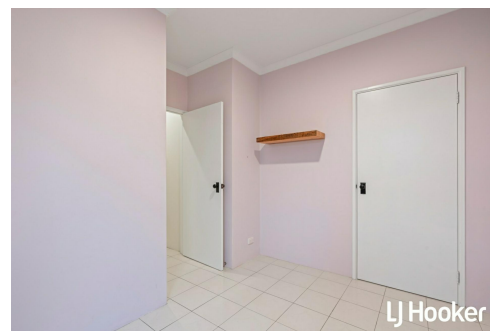
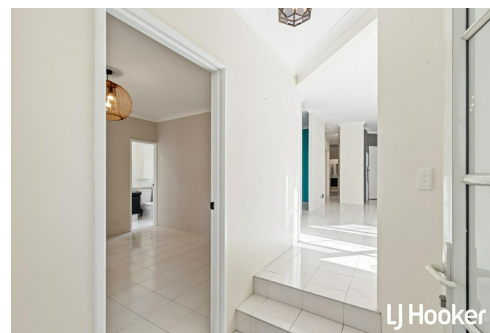
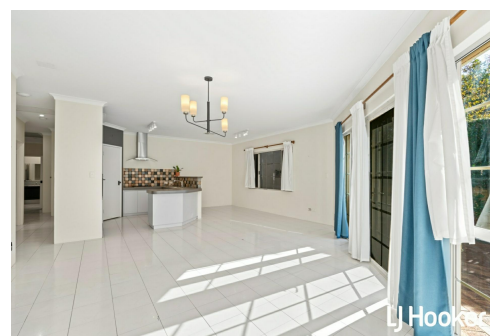
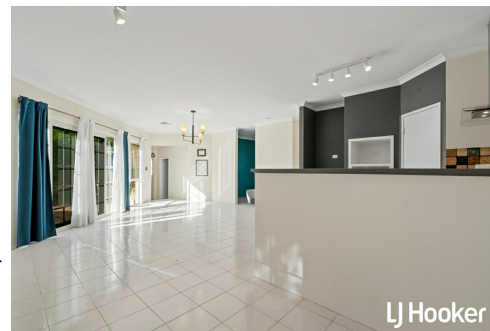
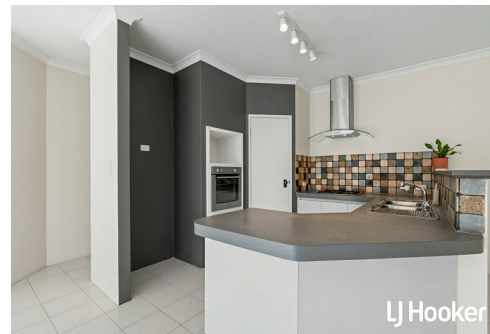
Please register your details by requesting/booking an inspection

*** ARE YOU A LANDLORD? If you are looking for property management services, we would love to hear from you. Contact our Business Development Team on 0407 722 867 or newrentals@ljhvicpark.com.au for a no-obligation and confidential conversation.

More About this Property

Property ID	5G15FFB
Property Type	House
Including	Air Conditioning Secure Parking Close to Schools Close to Shops Close to Transport

LJ Hooker Victoria Park | Belmont (WA) (08) 9473 7777
288 Albany Highway, VICTORIA PARK WA 6100
victoriapark-belmontwa.ljhooker.com.au | reception@ljhvicpark.com.au



Disclaimer: All information contained therein is gathered from relevant third parties sources. We cannot guarantee or give any warranty about the information provided. Interested parties must rely solely on their own enquiries.

LJ Hooker Victoria Park | Belmont (WA) (08) 9473 7777