

## Victoria Park, Unit 1/ 70 King George St

### Ground Floor Gem!

2 1 0

**For Lease**

\$630 pw

**View**

By Appointment

This well-presented two-bedroom ground floor apartment offers generous space, a practical layout and an unbeatable location - perfect for professionals, students, or anyone seeking low-maintenance living close to the action!

Set in a quiet complex of just four residences, the apartment features a bright, open-plan lounge and dining area with timber-look flooring, flowing out to a private front veranda overlooking the landscaped garden - an ideal spot to relax with a coffee or unwind after a busy day.

The kitchen is neat, functional and equipped with modern appliances and ample storage, while a separate laundry adds convenience rarely found in apartment living. Both bedrooms are spacious and include built-in robes. The bathroom is well-appointed with a separate bathtub and shower, plus a separate toilet for added practicality.



**Disclaimer:** All information contained therein is gathered from relevant third parties sources. We cannot guarantee or give any warranty about the information provided. Interested parties must rely solely on their own enquiries.

**LJ Hooker Victoria Park | Belmont  
(WA)  
(08) 9473 7777**



Additional features include reverse-cycle air conditioning, NBN connectivity and an undercover parking bay.

Located directly across from leafy Hawthorn Park and just moments from the heart of the Victoria Park café strip, this apartment offers excellent access to public transport, Curtin University, the Swan River and the Perth CBD.

This is a fantastic opportunity to secure a well-maintained property in a sought-after area. Enquire now to arrange a viewing!

#### Key Features:

- \* Ground floor apartment with a front veranda
- \* Air conditioning
- \* Spacious bedrooms
- \* Internal laundry
- \* Undercover parking

\*\*\* Please note for viewings, the complex is secure, please arrive 5 minutes early and wait out front for our agent to collect you. Please try to be on time, as once our agent has taken others up to the apartment, it can be difficult to return to the gate to collect you. If you arrive within the last 5 minutes of the booking time, we may not be able to show you through due to time restrictions and subsequent viewings at other properties.

- Unfurnished
- 6 or 12 months initial lease term

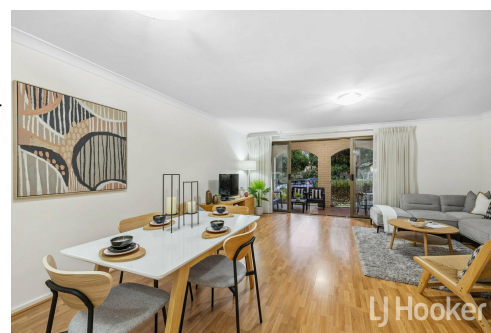
Please register your details by requesting/booking an inspection

\*\*\* ARE YOU A LANDLORD? If you are looking for property management services, we would love to hear from you. Contact our Business Development Team on 0407 722 867 or [newrentals@ljhvicpark.com.au](mailto:newrentals@ljhvicpark.com.au) for a no-obligation and confidential conversation.

## More About this Property

<b>Property ID</b>	5G51FFB
<b>Property Type</b>	Apartment
<b>Including</b>	Air Conditioning Built-in-Robes Car Parking - Surface

**LJ Hooker Victoria Park | Belmont (WA) (08) 9473 7777**  
288 Albany Highway, VICTORIA PARK WA 6100  
[victoriapark-belmontwa.ljhooker.com.au](mailto:victoriapark-belmontwa.ljhooker.com.au) | [reception@ljhvicpark.com.au](mailto:reception@ljhvicpark.com.au)



**Disclaimer:** All information contained therein is gathered from relevant third parties sources. We cannot guarantee or give any warranty about the information provided. Interested parties must rely solely on their own enquiries.

**LJ Hooker Victoria Park | Belmont  
(WA)  
(08) 9473 7777**