



28 Suffolk Drive, Valentine

## BEAUTIFUL FAMILY HOME IN PRIME LOCATION!

Beautifully presented home, built to enjoy the leafy outlook over Valentine and beyond. Featuring open plan living with separate lounge, landscaped gardens with large entertaining area

- Three large bedrooms, all include built-in robes and ceiling fans, two bedrooms include ensuites.
- Neat and tidy stainless steel appliances and ample bench and cupboard space.
- Open plan kitchen, family room and dining room.
- Living room with ceiling fan, balcony and bar area
- Flooring is a blend of timber and carpet areas.
- Relax in the landscaped backyard
- Double garage, including plenty of under house storage

APPLY NOW!

[https://app.tenantooptions.com.au/apply\\_link?agent\\_uid=fc96c2d1-8092-4856-8b5e-e8d302ba0cce&full\\_address=28+Suffolk+Drive%2C+Valentine%2C+NSW%2C+2280](https://app.tenantooptions.com.au/apply_link?agent_uid=fc96c2d1-8092-4856-8b5e-e8d302ba0cce&full_address=28+Suffolk+Drive%2C+Valentine%2C+NSW%2C+2280)

BOOK INSPECTION HERE!

[https://app.tenantooptions.com.au/book\\_inspection/new?agent\\_id=](https://app.tenantooptions.com.au/book_inspection/new?agent_id=)

All information contained therein is gathered from relevant third parties sources. We cannot guarantee or give any warranty about the information provided. Interested parties must rely solely on their own enquiries.

3 3 2

**FOR RENT**

\$850 pw

**VIEW**

By Appointment

**AGENTS**

Ashleigh Maxwell  
ashleigh.maxwell@ljhooker.com.au

Courtney Kaczmar  
courtney.kaczmar@ljhooker.com.au

**AGENCY**

LJ Hooker Warners Bay  
(02) 4915 3800

LJ Hooker

[2830&agent\\_uid=fc96c2d1-8092-4856-8b5e-e8d302ba0cce&full\\_address=28+Suffolk+Drive%2C+Valentine%2C+NSW%2C+2280&property\\_crm\\_id=1P23939](https://www.ljhooker.com.au/2830?agent_uid=fc96c2d1-8092-4856-8b5e-e8d302ba0cce&full_address=28+Suffolk+Drive%2C+Valentine%2C+NSW%2C+2280&property_crm_id=1P23939)

## MORE DETAILS

Property ID	ZHVHN8
Property Type	House
Including	Dishwasher Built-in-Robes Close to Schools Close to Transport Fenced Backyard Internal access Verandah Walk-in robe

### Ashleigh Maxwell

Property Investment Manager | [ashleigh.maxwell@ljhooker.com.au](mailto:ashleigh.maxwell@ljhooker.com.au)

### Courtney Kaczmar

| [courtney.kaczmar@ljhooker.com.au](mailto:courtney.kaczmar@ljhooker.com.au)

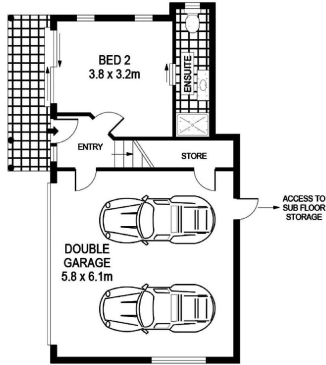
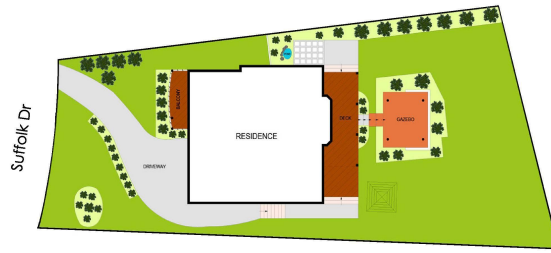
### LJ Hooker Warners Bay (02) 4915 3800

Shop 12, 240-260 Hillsborough Rd, WARNERS BAY NSW 2282  
[warnersbay.ljhooker.com.au](http://warnersbay.ljhooker.com.au) | [warnersbay@ljhooker.com.au](mailto:warnersbay@ljhooker.com.au)

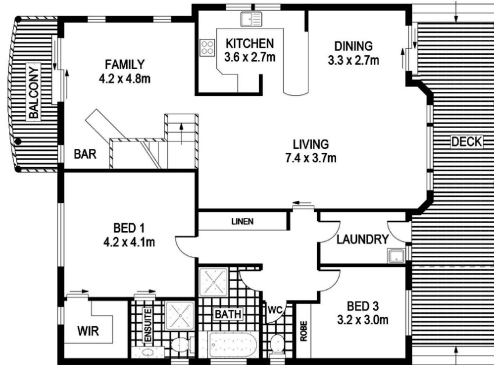


All information contained therein is gathered from relevant third parties sources.  
We cannot guarantee or give any warranty about the information provided.  
Interested parties must rely solely on their own enquiries.

Site Plan  
Not to Scale



Lower Floor Plan



Upper Floor Plan  
Total Internal Floor Area: 188 sqm



28 Suffolk Dr,  
Valentine



Measurements and direction of north are approximate and are to be used as a guide only.