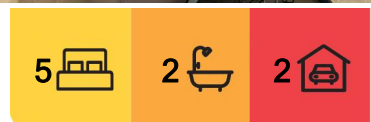


Upper Kedron, 209 Canvey Street

FROM THE TIME YOU PULL UP YOU WILL HAVE THE WOW FACTOR!

Perfectly set on an elevated inside street lined with contemporary homes, this faultless ex display home is the ultimate. With multiple living areas, a practical layout and brilliant proportions; this home is awaiting a family seeking the best in location, quality, functionality and style. The home has been architecturally designed to flow out seamlessly to the covered rear alfresco entertaining area which overlooks the sizeable family friendly yard.

The home's chic modern design is complemented by its coveted position within the Ellendale Estate, which is elevated and offers some wonderful views over parkland. The Ellendale Estate is just 12 kilometres to the Brisbane CBD, backs onto the South D'Aguilar National Park and was designed to include 40%



For Lease

Please Call

View

ljhooker.com.au/37NEF1R

Contact

Bella Garside

office.aspley@ljhooker.com.au



Disclaimer: All information contained therein is gathered from relevant third parties sources. We cannot guarantee or give any warranty about the information provided. Interested parties must rely solely on their own enquiries.

LJ Hooker Aspley | Chermiside
(07) 3263 6022

greenspace. The property is within a 10 minute drive of the Ferny Grove train station and being a family friendly location, there are a variety of excellent public and private schools within a convenient distance of the home.

Features include:

- *Four good size bedrooms with walk in robes
- *Main bedroom with balcony and huge walk in robe
- *Ducted air conditioning throughout
- *Separate carpeted Lounge
- *Powder room
- *Study
- *Additional storage
- *Internal laundry
- *Large alfresco via concealed sliding doors
- *Open plan living
- *Well appointed kitchen with quality appliances and walk in pantry
- *Fully fence manicured gardens
- *Double remote control garage

Go directly to <https://aspley.ljhooker.com.au> to register to inspect.

PLEASE NOTE, if you do not register online, we cannot notify you of any time changes or cancellations to inspections.

To apply please submit an online application via 2Apply at the following website - <https://www.2apply.com.au/login>

Alternatively, you can download and print our application by visiting our website - <https://aspley.ljhooker.com.au/renting/tenancy-application-form>

All information contained herein is gathered from sources we consider to be reliable. However, we cannot guarantee or give any warranty about the information provided. Interested parties must solely rely on their own enquiries.

More About this Property

Property ID	37NEF1R
Property Type	House
Including	Balcony Dishwasher Outdoor Entertaining Built-in-Robes

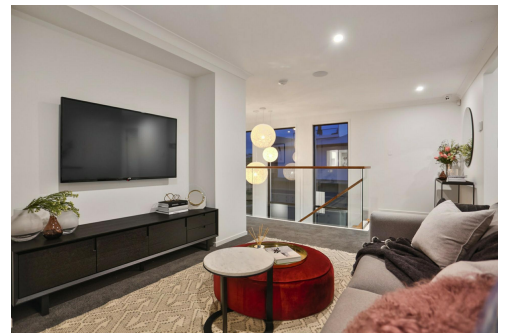
Bella Garside

Receptionist | office.aspley@ljhooker.com.au

LJ Hooker Aspley | Chermside (07) 3263 6022

1359 Gympie Road, ASPLEY QLD 4034

aspley.ljhooker.com.au | aspley@ljhooker.com.au



LJ Hooker Aspley | Chermside
(07) 3263 6022

Disclaimer: All information contained therein is gathered from relevant third parties sources. We cannot guarantee or give any warranty about the information provided. Interested parties must rely solely on their own enquiries.

