

 LJ Hooker

LEASED



Upper Coomera, 10 Sundew Crescent

COMPLETELY RENOVATED!

Step into 10 Sundew Crescent, This fully renovated family home is where contemporary luxury seamlessly blends with functionality. This remarkable residence isn't just a home; it's an opportunity to elevate your lifestyle.

Upon entry, you'll find a generously proportioned family haven crafted with your comfort in mind. Boasting two distinct living zones - a combined kitchen and lounge and a cinema room. Whether it's cozy movie nights with loved ones or peaceful solitude, this abode caters to all your needs.

The focal point of this residence is undeniably its expansive kitchen, complete with a spacious bench, sleek stone countertops, and an impressive pantry. Whip up delectable meals with ease while engaging with guests in the adjacent living spaces and outside entertaining area.

4 

2 

2 

For Lease
Please Call

View
ljhooker.com.au/9CJ0C

Contact
Mike Smith
mike.smith@ljhooker.com.au

 LJ Hooker

Disclaimer: All information contained therein is gathered from relevant third parties sources. We cannot guarantee or give any warranty about the information provided. Interested parties must rely solely on their own enquiries.

LJ Hooker Oxenford
(07) 5632 8428

Features

- Newly renovated - everything is new!
- Master Bedroom with ensuite his and her shower and vanity
- 3 Additional bedrooms with built-in robes
- 2 Living areas
- Sheltered parking for a boat or trailer
- Outdoor entertainment space with firepit
- Solar Panels
- Split System and ceiling fans
- Double Garage
- Extra space for off-street parking

In addition to its impressive amenities, this property enjoys a prime location near all essential conveniences. From schools to prominent shopping destinations such as Westfield and Costco, to major transportation arteries like the M1, everything you need is just moments away.

Don't miss out on the opportunity to make this dream home yours! Contact us today to schedule a viewing and experience the magic of Upper Coomera living for yourself. Your slice of paradise awaits!

More About this Property

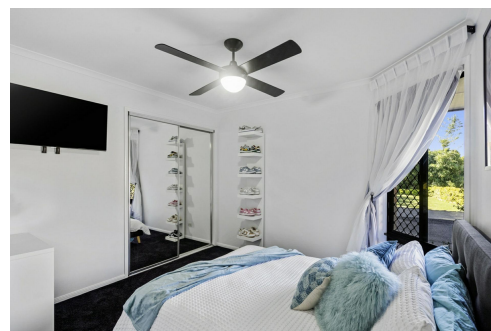
Property ID	9CJ0C
Property Type	House
Land Area	900 sqm
Including	Ensuite

Mike Smith

Administration | mike.smith@ljhooker.com.au

LJ Hooker Oxenford (07) 5632 8428

13/5 Michigan Drive, OXENFORD QLD 4210
oxenford@ljhooker.com.au | oxenford@ljhooker.com.au



Disclaimer: All information contained therein is gathered from relevant third parties sources. We cannot guarantee or give any warranty about the information provided. Interested parties must rely solely on their own enquiries.

LJ Hooker Oxenford
(07) 5632 8428



10 Sundew Cres, Upper Coomera

BED 4 BATH 2 CAR 3

Internal: 234 m² | External: 91 m² | Approx Total: 325 m²

Whilst every attempt has been made to ensure the accuracy of the floor plan contained here, measurements of doors, windows, rooms and any other item are approximate and no responsibility is taken for any error, omission, or misstatement. This plan is for illustrative purposes only and should only be used as such by any prospective purchaser.

