

Unley, 29 Charles Street

Furnished - Modern Lifestyle Living

4 2 2

Discover the pinnacle of modern luxury in this newly built architecturally designed townhouse, perfectly nestled in one of Adelaide's most sought-after eastern suburbs. Offering a flawless blend of high-end finishes, generous living spaces, and seamless indoor-outdoor connectivity, this home is a statement of style and sophistication.

Beyond the striking contemporary facade, a grand entrance welcomes you into light-filled interiors, where stunning herringbone flooring leads the way. Expansive windows frame the home beautifully, allowing natural light to flow through and enhancing the sense of space created by high ceilings throughout.

The open-plan design effortlessly merges the kitchen, dining, and living spaces, delivering a home designed for both comfort and entertaining. At its heart, the gourmet kitchen showcases premium stone benchtops, brushed brass tapware, and a sleek island bench. The adjacent butler's pantry provides additional storage and workspace, complementing

For Lease
Please Call

View
l.jhooker.com.au/616PFDJ

Contact
Emma Watson
0433 690 621
ewatson@ljhkensingtonunley.com.au
Sunny Thakkar
sthakkar@ljhkensingtonunley.com.au



Disclaimer: All information contained therein is gathered from relevant third parties sources. We cannot guarantee or give any warranty about the information provided. Interested parties must rely solely on their own enquiries.

LJ Hooker Kensington | Unley
(08) 8431 6088

the suite of state-of-the-art Miele appliances, including a 5-burner gas cooktop, oven, and dishwasher.

Designed for relaxation and entertaining, the living area features a striking stone gas fireplace and an integrated fridge-ideal for a stylish bar setup. Glass sliding doors extend the space outdoors, leading to an all-weather alfresco area complete with a ceiling fan, built-in BBQ, and sink. Overlooking a beautifully decked courtyard, this outdoor oasis is perfect for year-round enjoyment.

The master suite is a private sanctuary, positioned at the front of the home to take in tranquil garden views. Soft plush carpeting, a stylish walk-in robe, and a luxurious ensuite with floor-to-ceiling tiles, a double vanity, and designer brushed brass tapware complete this retreat.

Upstairs, a second living space offers versatility as a lounge or media room, while three generously sized bedrooms provide comfort for the whole family. Each bedroom is fitted with plush carpet and built-in robes, and the main bathroom continues the home's refined aesthetic with brushed brass fittings, pendant lighting, and a deep bathtub for relaxation.

Additional features enhance both convenience and lifestyle, including a well-appointed ground floor powder room, a functional laundry with built-in cabinetry and external access, and a secure double garage with rear lane access. For ultimate comfort and peace of mind, the home is equipped with tinted double-glazed windows, a Daikin ducted reverse cycle air conditioning system, and a state-of-the-art security alarm.

This exceptional residence is designed for those who appreciate effortless elegance and modern living. Don't miss your chance to call this masterpiece home!

Lease Term: 12 months

Available from: NOW

Water Charges: Tenant responsible for supply and usage

To apply for this property, please visit www.tenantoptions.com.au.

Applications will not be processed unless you have attended an open inspection.

TO VIEW THIS PROPERTY: please enquire via the 'Book an Inspection' or 'Request an Inspection' button and we will respond with an inspection time (if available). You must be registered for the inspection to attend. If no inspection times are currently available, please submit your details and you will be advised instantly when a new time is available.

By registering, you will be instantly informed of any updates, changes.

Disclaimer: All information provided has been obtained from sources we believe to be accurate, however, we cannot guarantee the information is accurate and we accept no liability for any errors or omissions (including but not limited to a property's land size, floor plans and size, building age and condition). Interested parties should make their own enquiries and obtain their own legal and financial advice.



LJ Hooker Kensington | Unley
(08) 8431 6088

Disclaimer: All information contained therein is gathered from relevant third parties sources. We cannot guarantee or give any warranty about the information provided. Interested parties must rely solely on their own enquiries.

More About this Property

Property ID	616PFDJ
Property Type	House

Emma Watson 0433 690 621

Senior Property Manager | ewatson@ljhkensingtonunley.com.au

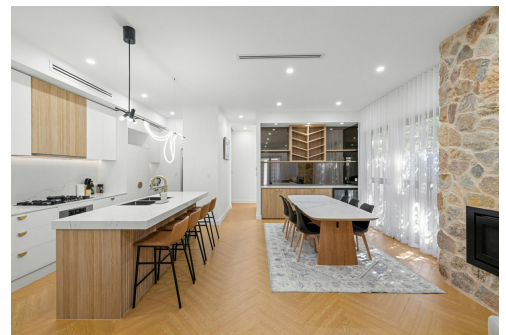
Sunny Thakkar

Leasing Coordinator | sthakkar@ljhkensingtonunley.com.au

LJ Hooker Kensington | Unley (08) 8431 6088

295 Kensington Road, KENSINGTON PARK SA 5068

kensingtonunley.ljhooker.com.au | reception@ljhkensingtonunley.com.au



Disclaimer: All information contained therein is gathered from relevant third parties sources.
We cannot guarantee or give any warranty about the information provided. Interested parties must rely solely on their own enquiries.

**LJ Hooker Kensington | Unley
(08) 8431 6088**



Ground	117.21m ²
First	100.60m ²
Alfresco	19.00m ²
Porch	1.50m ²
Carport	36.93m ²
Total	275.24m²

Ground Floor

First Floor

Scale in metres. This drawing is for illustration purposes only. All measurements are approximate and details intended to be relied upon should be independently verified.