

A14/5-15 Lamond Drive, Turrumurra


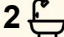

Conveniently located Penthouse Available Now!

This spacious North East facing 2 bed penthouse is conveniently located in the heart of Turrumurra, only steps away from Turrumurra train station and Shops. This property boasts the convenient lifestyle! Be quick, don't miss out on this great opportunity

Some property Features Include:

- Expansive and open plan living and dining
- Sun-filled generous bedrooms both with built-in robes
- Modern open plan kitchen and gas appliances
- Private, generously sized balcony, ideal for entertaining
- Ducted a/c throughout, internal laundry
- Secure parking plus storage cage

DISCLAIMER: All information contained herein is gathered from sources that we believe reliable. We have no reason to doubt its accuracy, however we cannot guarantee it. This information is not to be used in formalising any decision nor used by nor used by a third party without the expressed written permission of LJ Hooker Gordon.

2  2  1 

FOR RENT
\$820/week

VIEW
By Appointment

AGENTS
Kenny Gong
0456 887 000
kgong@ljhookergordon.com.au

AGENCY
LJ Hooker Gordon
(02) 9496 8000

MORE DETAILS

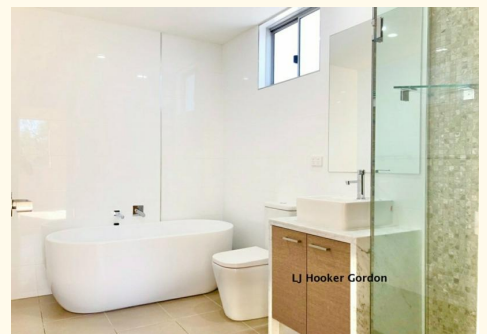
Property ID 54RHJX
Property Type Unit

Kenny Gong 0456 887 000

Managing Director | Sales Executive | kgong@ljhookergordon.com.au

LJ Hooker Gordon (02) 9496 8000

Shop 1, 777-779 Pacific Highway, GORDON NSW 2072
gordon.ljhooker.com.au | reception@ljhookergordon.com.au



All information contained therein is gathered from relevant third parties sources.
We cannot guarantee or give any warranty about the information provided.
Interested parties must rely solely on their own enquiries.