



Timaru, 90 Poplar Street

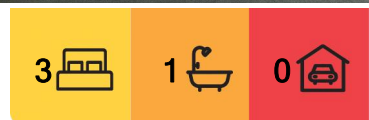
Gleniti Family Living

Located in a peaceful setting at the end of Poplar Street, this property is close to the popular Gleniti Primary School as well as The Learning Barn.

This is a comfortable three bedroom. One bathroom and an extra toilet. Sunny open plan living with room for the dining table and a heat pump to keep you cosy in the cooler months. Double garaging and an easily maintained flat section with raised beds for the vegetable garden.

To view or apply, please paste the following link into your browser:

<https://apply.tenant.co.nz/6498717>



For Lease
Please Call

View
l.jhooker.co.nz/15EKGTA

Contact
Kirsty de Wit
027 397 9060
kirsty.timaru@l.jhooker.co.nz



Disclaimer: All information contained therein is gathered from relevant third parties sources. We cannot guarantee or give any warranty about the information provided. Interested parties must rely solely on their own enquiries.

LJ Hooker Timaru
(03) 688 3029
Enting Real Estate Limited

More About this Property

Property ID	15EKGTA
Property Type	House
Licensed Real Estate Agents (REAA2008)	

Kirsty de Wit 027 397 9060

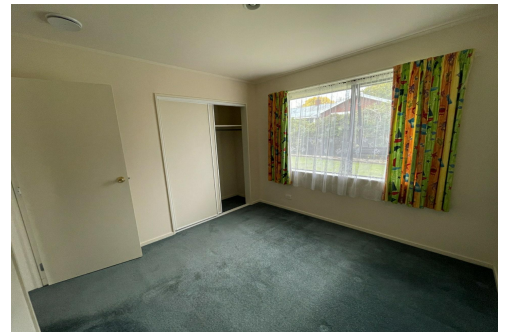
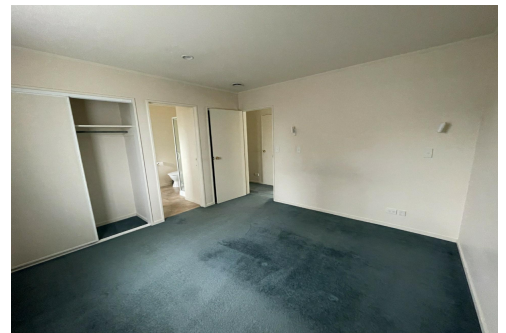
Property Manager | kirsty.timaru@ljhooker.co.nz

LJ Hooker Timaru (03) 688 3029

Enting Real Estate Limited

51 Church Street, TIMARU 7910

timaru.ljhooker.co.nz | timaru@ljhooker.co.nz



Disclaimer: All information contained therein is gathered from relevant third parties sources.

We cannot guarantee or give any warranty about the information provided. Interested parties must rely solely on their own enquiries.

LJ Hooker Timaru
(03) 688 3029
Enting Real Estate Limited