



16 Clyde Carr Crescent, Timaru

## Close to the showgrounds complex

Available now!

This very comfortable home is ideal for a family. Three bedrooms (all with double wardrobes) and open-plan living makes this a great home.




The bathroom has a vanity and bath in one room and an adjoining shower room plus a separate toilet.

A modern kitchen includes a dishwasher.

The outside living space at the rear of the property captures plenty of sun and is an ideal place to have a family barbecue or for the children to play outside. The garden areas are well thought out to make the gardening easy and the area useful.

A basement garage is included. Located close to the Showgrounds Shopping Centre and is in the Grantlea Downs School zone.

Available from the 1st of January 2026. Total move in costs - \$2,120 + 1st week \$530 = \$2,650

3  1  1 

### FOR RENT

Please Call

### AGENTS

Chantel Johnston

027 331 1799

chantel.timaru@ljhooker.co.nz

### AGENCY

LJ Hooker Timaru

(03) 688 3029

Enting Real Estate Limited

All information contained therein is gathered from relevant third parties sources. We cannot guarantee or give any warranty about the information provided. Interested parties must rely solely on their own enquiries.



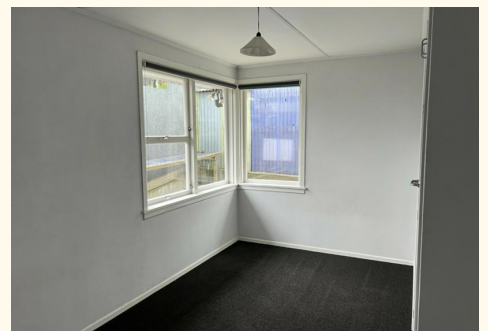
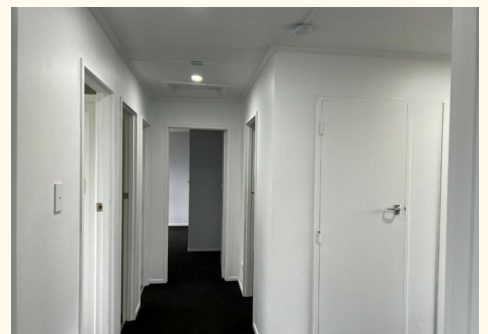
To apply for this property please copy this link into your browser  
<https://apply.tenant.co.nz/6441868> or phone us on 03 688 3029

## MORE DETAILS

Property ID 153GGTA  
Property Type House  
Licensed Real Estate Agents (REAA2008)

**Chantel Johnston 027 331 1799**  
Property Manager | [chantel.timaru@ljhooker.co.nz](mailto:chantel.timaru@ljhooker.co.nz)

**LJ Hooker Timaru (03) 688 3029**  
Enting Real Estate Limited  
51 Church Street, TIMARU 7910  
[timaru.ljhooker.co.nz](mailto:timaru.ljhooker.co.nz) | [timaru@ljhooker.co.nz](mailto:timaru@ljhooker.co.nz)



All information contained therein is gathered from relevant third parties sources.  
We cannot guarantee or give any warranty about the information provided.  
Interested parties must rely solely on their own enquiries.