



6 Cambridge Street, Thornton


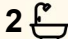

GREAT PROPERTY!!

This four bedroom family home is located on one of Thornton's newest estates Thornton North. Surrounded by other quality homes, approximately 25 Minutes to Newcastle short drive to shops, public school and Local transport

Features Include:

- 4 Generous sized bedrooms
- Main with 2 built in robes and ensuite
- Built in robes in the remaining 3 bedrooms
- Kitchen with quality stainless steel appliances, dishwasher and microwave space
- Large sized tiled lounge room
- Large separate tiled family/ dining room with split system air con and natural gas connection point
- Double garage with automatic roller door with internal access
- Large Laundry
- Outdoor covered entertaining area overlooking low maintenance landscaped yard with additional natural gas connection point.
- Water tank

Disclaimer: The photos indicating the condition of the advertised property may or may not be an exact reflection of the current condition of the property. If you have any concerns please contact the office to

4  2  2 

FOR RENT

\$740 pw

VIEW

Fri 12th Jun @ 2:45PM - 3:00PM

AGENTS

Kayley Hutcheon

0437 529 539

khutcheon.maitland@ljhooker.com.au

AGENCY

LJ Hooker Maitland

(02) 4933 5511

All information contained therein is gathered from relevant third parties sources. We cannot guarantee or give any warranty about the information provided. Interested parties must rely solely on their own enquiries.

 **LJ Hooker**

confirm this prior to any inspection.

MORE DETAILS

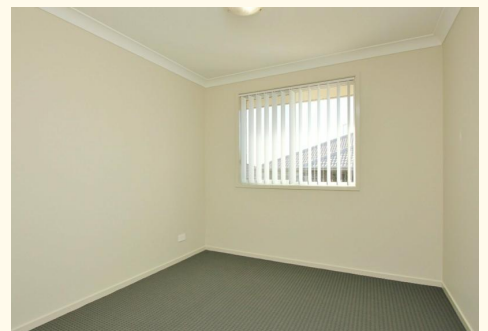
Property ID 1F5TF6H
Property Type House
Including Built-in-Robes

Kayley Hutcheon 0437 529 539

Property Investment Manager | khutcheon.maitland@ljhooker.com.au

LJ Hooker Maitland (02) 4933 5511

24 Ken Tubman Drive, MAITLAND NSW 2320
maitland.ljhooker.com.au | maitland@ljhooker.com.au



All information contained therein is gathered from relevant third parties sources.
We cannot guarantee or give any warranty about the information provided.
Interested parties must rely solely on their own enquiries.