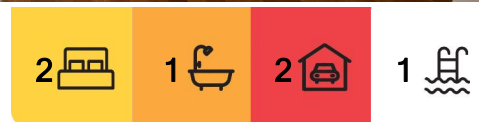




The Entrance North, 8/3-5 Hutton Road

BEACHSIDE PARADISE - WONDERFUL LAKE & PARK VIEWS



For Lease
Please Call

View
ljhooker.com.au/167YF7M

PLEASE TELEPHONE OUR OFFICE ON 4332 2555 HALF AN HOUR PRIOR TO INSPECTION TIME TO CONFIRM YOUR ATTENDANCE!

Boasting gorgeous views across The Entrance Channel, parkland and beyond, situated in this recently upgraded absolute beachfront complex this is truly a rare find.

From the front grassed area in your complex with the sands and ocean adjoining the grassed common entertaining area of the complex this type of beachfront living is usually only reserved for the precious few.

The unit features a brand new kitchen and bathroom, spacious and bright living area flowing outdoors to a relaxing balcony with fantastic views, floating timber floors, separate storage area, built in wardrobe in the first bedroom, separate toilet, double garaging, in-ground pool with visitor area in a secure beachfront complex.

All just approx. 1 hour from Sydney CBD with Cafes, shopping, pubs just minutes walk



LJ Hooker The Entrance
(02) 4332 2555

Disclaimer: All information contained therein is gathered from relevant third parties sources. We cannot guarantee or give any warranty about the information provided. Interested parties must rely solely on their own enquiries.

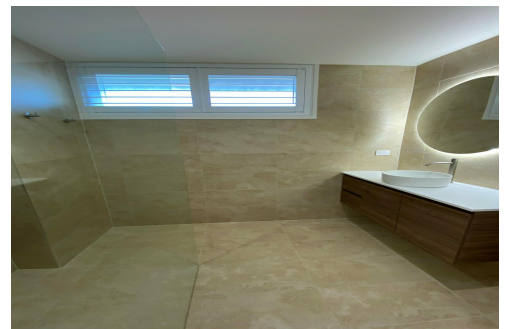
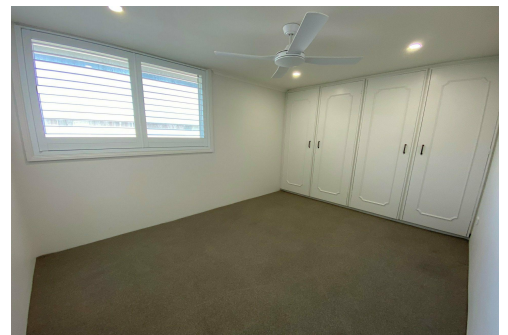
away.

Pets will be considered upon application.

More About this Property

Property ID	167YF7M
Property Type	Unit
Including	Pool Balcony Built-in-Robes Secure Parking

LJ Hooker The Entrance (02) 4332 2555
213 The Entrance Road, THE ENTRANCE NSW 2261
theentrance.ljhooker.com.au | theentrance@ljhooker.com.au



LJ Hooker The Entrance
(02) 4332 2555

Disclaimer: All information contained therein is gathered from relevant third parties sources. We cannot guarantee or give any warranty about the information provided. Interested parties must rely solely on their own enquiries.