

Terrigal, 404/6 Pine Tree Lane

Modern Coastal Living in the Heart of Terrigal

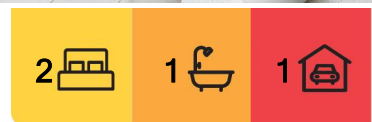
Experience stylish, low-maintenance living in this sleek and modern apartment, perfectly positioned just moments from Terrigal's vibrant cafes, restaurants, and stunning beach.

Property Features include:

- 2 bedrooms with large built-in wardrobes
- 1 stylish bathroom, separate toilet room for convenience
- Built-in TV unit doubles as a study desk
- Gas cooktop & custom built-in fridge for a seamless look
- European laundry opposite the kitchen
- Ducted air conditioning throughout
- Large balcony, perfect for entertaining
- Secure building for peace of mind
- One secure basement car park
- Elevator to access necessary floors



Disclaimer: All information contained therein is gathered from relevant third parties sources. We cannot guarantee or give any warranty about the information provided. Interested parties must rely solely on their own enquiries.



For Lease
Please Call

View
ljhooker.com.au/1H09GC1

Contact
Kira Morgan
0431 245 255
kira.morgan@ljhooker.com.au

LJ Hooker Terrigal
(02) 4385 8444

- Flat walk to all of Terrigal's best attractions

To arrange an inspection submit an online enquiry or Call 0431 245 255

More About this Property

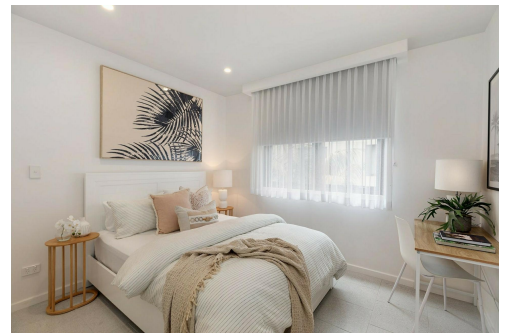
Property ID	1H09GC1
Property Type	Apartment
Including	Air Conditioning Intercom Dishwasher Built-in-Robes Car Parking - Basement Close to Shops Close to Transport Disabled Access Gas Internal Laundry

Kira Morgan 0431 245 255

Leasing Consultant and Business Development Manager |
kira.morgan@ljhooker.com.au

LJ Hooker Terrigal (02) 4385 8444

Shop 1 & 2, 1 Campbell Crescent, TERRIGAL NSW 2260
terrigan.ljhooker.com.au | terrigan@ljhooker.com.au



Disclaimer: All information contained therein is gathered from relevant third parties sources.
We cannot guarantee or give any warranty about the information provided. Interested parties must rely solely on their own enquiries.

LJ Hooker Terrigal
(02) 4385 8444



0 1 2 3 4 5

N

INTERNAL AREA : 84 M²
EXTERNAL AREA : 32.5 M²

All information contained in this document is from sources we believe to be accurate, however we cannot guarantee its accuracy. Interested persons should make and rely on their own enquiries in relation to measurements, dimensions, layout, furniture and descriptions.