



Teneriffe, 6/306 Kent Street

Super Cool Location

RENT INCREASE - \$540 until the 22/2/25 then will increase to \$575pw

This superbly located 2 bedroom unit is situated on the top floor of a well maintained elevated block, inviting all the summertime breezes to sweep from the river through your north facing balcony.

- 2 spacious bedrooms with built-in wardrobes and ceiling fans
- Extra large kitchen
- Single Lock up garage with room for storage
- Walk to Ferry terminal, bus, and all the shops and cafes that make Teneriffe a great place to live.

Register now to inspect so you don't miss out on this great opportunity.



For Lease
Please Call

View
ljhooker.com.au/29JHXX

Contact
LJ Hooker Clayfield Property Management



LJ Hooker Clayfield
(07) 3262 2434

Disclaimer: All information contained therein is gathered from relevant third parties sources. We cannot guarantee or give any warranty about the information provided. Interested parties must rely solely on their own enquiries.

More About this Property

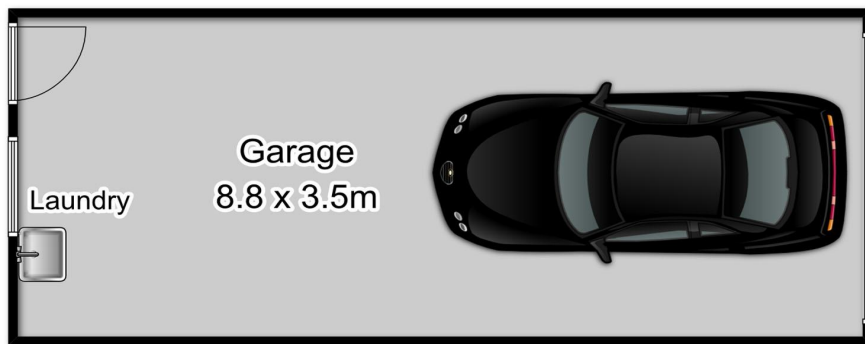
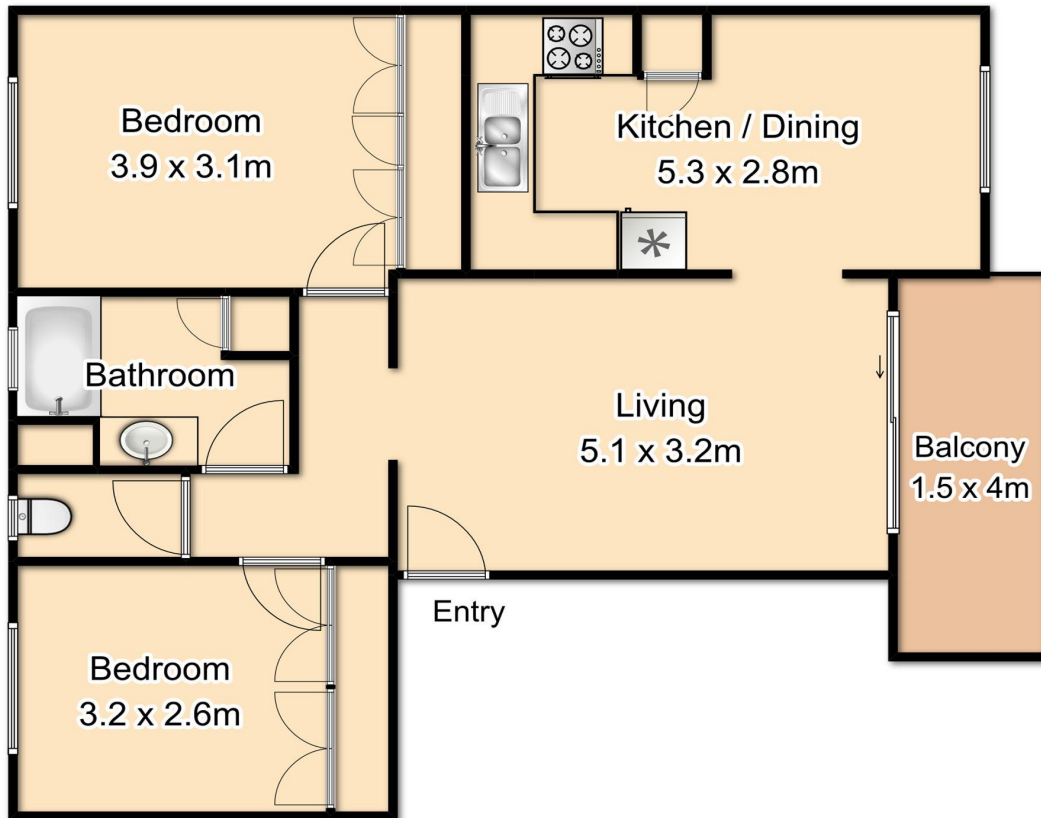
Property ID	29JHXX
Property Type	Unit
Including	Balcony Built-in-Robes Secure Parking

LJ Hooker Clayfield Property Management
Property Management

LJ Hooker Clayfield (07) 3262 2434
723 Sandgate Road, CLAYFIELD QLD 4011
clayfield.ljhooker.com.au | admin@ljhclayfield.com.au



Unit 6, 306 Kent Street, New Farm



Internal area: 70m²
Balcony area: 6m²
Garage area: 31m²
Total area: 107m²

Whilst every attempt has been made to ensure the accuracy of the floor plan contained here, measurements of doors, windows, rooms and any other items are approximate and no responsibility is taken for any error, omission, or miss-statement. This plan is for illustrative purposes only and should be used as such by any prospective buyer.