

## Tarragindi, 30A Sunshine Avenue

### PLENTY TO LOVE ON SUNSHINE AVENUE

Located in the leafy suburb of Tarragindi, 30A Sunshine Avenue offers both comfort and convenience for its next tenant.

The upper level of the home offers an air-conditioned, and open plan living and dining space with direct access to the modern kitchen and covered deck. For the cook of the home, the kitchen has plenty of bench space, an oversized walk-in pantry, island bench, dishwasher, oven, and induction cooktop with a rangehood overhead.

There are 4 bedrooms on offer, all with ceiling fans and built-in wardrobes. The main bedroom has air-conditioning, a walk-in wardrobe and ensuite. A main bathroom services the rest of the home with separate shower and bath. The separate toilet is positioned to the side.

Downstairs there is a second living space to use in line with your needs, whether it is a



**Disclaimer:** All information contained therein is gathered from relevant third parties sources. We cannot guarantee or give any warranty about the information provided. Interested parties must rely solely on their own enquiries.

4

2

2

**For Lease**

\$970 per week

**View**

By Appointment

**Contact**

**Josephine Elvin**

0457 000 897

joey.elvin@ljhookerproperty.com.au

**LJ Hooker Annerley | Yeronga |  
Salisbury  
(07) 3848 7369**

home office or kids / teenagers retreat, this room is a bonus.

There is secure parking for 2 cars, accessible via remove and internally through the lower level.

Located in one of southside Brisbane's blue-chip suburbs, this four-bedroom home offers executive living. This property is a short distance to bike tracks along the river with the CBD only 7km away. Close to local schools - Wellers Hill School and St Elizabeth's School and within close proximity to Greenslopes hospital. You are just moments away from public transport (bus and rail services), local shops, cafes, restaurants, parkland, Toohey Forest and with easy access to SE Freeway.

Features of 30A Sunshine Avenue at a glance:

- Air-conditioned and open plan living & dining space
- Covered deck
- Modern kitchen with plenty of bench space, an oversized walk-in pantry, island bench, dishwasher, oven & induction cooktop with a rangehood overhead
- 4 bedrooms with ceiling fans & built-in wardrobes
- Main bedroom with air-conditioning, a walk-in wardrobe & ensuite
- Main bathroom with separate shower & bath
- Separate toilet
- 2nd living space downstairs with flexible use
- Secure parking for 2 cars, accessible via remove & internally through the lower level
- 7km to the city
- Within the Wellers Hill State School catchment
- Within the Holland Park State High School catchment

BOOK AN INSPECTION ONLINE - ITS EASY!

Click on the · Book Inspection· or · Request an Inspection· Button under the open for inspections times

· · · By registering for an inspection, you will be INSTANTLY informed of any updates, changes or cancellations for your property appointment. If no one registers for an inspection time - then that inspection may not proceed. If there are no times set for this property yet, STILL REGISTER and as soon as times are set, you will be advised of the day and time · · · ·

TO APPLY for this rental property please go direct to our website (below) or contact our office on 07 3848 7369. <https://annerleyyeronga.ljhooker.com.au/search/property-for-rent/page-1>

Disclaimer: Whilst every care is taken in the preparation of the information contained herein, we will not be held liable for any errors in typing or information. All information is considered correct at the time of writing and any interested parties should satisfy themselves in this respect.



**Disclaimer:** All information contained therein is gathered from relevant third parties sources. We cannot guarantee or give any warranty about the information provided. Interested parties must rely solely on their own enquiries.

**LJ Hooker Annerley | Yeronga |  
Salisbury  
(07) 3848 7369**



## More About this Property

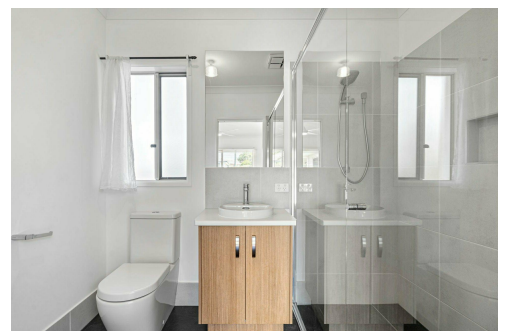
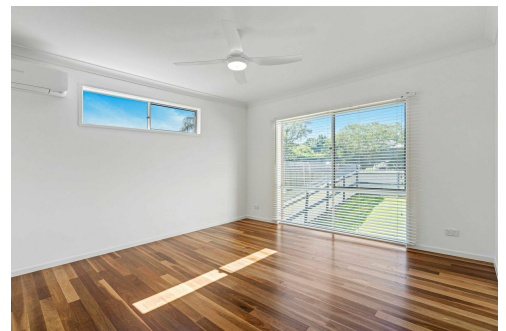
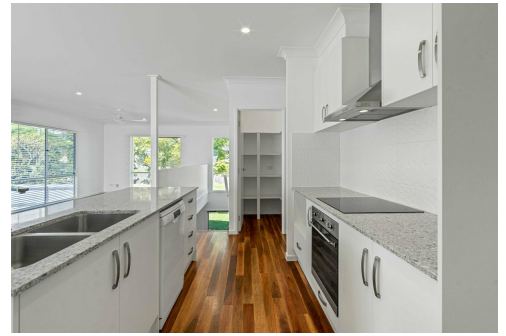
Property ID	1EQFH31
Property Type	House
Including	Ensuite Air Conditioning Deck Dishwasher Outdoor Entertaining Floorboards Built-in-Robes Secure Parking Remote Garage

**Josephine Elvin 0457 000 897**

Property Manager & New Business Manager | Sales Associate to Jane Elvin |  
joey.elvin@ljhookerproperty.com.au

**LJ Hooker Annerley | Yeronga | Salisbury (07) 3848 7369**

443 Ipswich Road, ANNERLEY QLD 4103  
annerleyyeronga.ljhooker.com.au | admin@ljhookerproperty.com.au



**Disclaimer:** All information contained therein is gathered from relevant third parties sources.  
We cannot guarantee or give any warranty about the information provided. Interested parties must rely solely on their own enquiries.

**LJ Hooker Annerley | Yeronga |  
Salisbury  
(07) 3848 7369**