



Tamborine Mountain, 411A Long Road

Classic Queenslander close to everything

If you have been looking for a little character in a convenient location this classic Queenslander is the house you have been looking for.

Located right in the heart of Tamborine Mountain conveniently positioned only a short distance to local schools and shopping. This spacious old classic with its fully fenced yard is the perfect hideaway.

Features Include

- ~ 3 spacious bedrooms with high ceilings and ceiling fans
- ~ Large eat-in country kitchen with island bench and a large amount of storage
- ~ Master bedroom with huge walk-in robe
- ~ Wrap around verandas with french doors from the bedroom and lounge
- ~ Large rear undercover entertaining deck overlooking the yard



Disclaimer: All information contained therein is gathered from relevant third parties sources. We cannot guarantee or give any warranty about the information provided. Interested parties must rely solely on their own enquiries.

LEASED



For Lease

Please Call

View

ljhooker.com.au/HRHZF

Contact

Cassie Wealleans

07 5585 7888

leasing.coomera@ljhgc.com.au

LJ Hooker Tamborine Mountain
(07) 5545 1500

- ~ Fully renovated family bathroom
- ~ Original Timber floors and high ceilings throughout
- ~ Ceiling fans throughout plus reverse cycle air-conditioning
- ~ Generous flat fully fenced yard with established trees and lawns
- ~ Property on tank water
- ~ Wireless internet only

**** ARRANGE AN INSPECTION TIME ONLINE****

**** REGISTRATION REQUIRED ****

By registering, you will be INSTANTLY informed of any updates, changes or cancellations for your appointment. Please be aware that even though you may be booked in for an inspection, it does sometimes occur that the property may be leased prior to the time and date you have been given. If that occurs, you will receive a text informing you of the cancellation. Once registered, you will receive and email from our agency as to the guidelines of entry. Please ensure you read them and adhere to them strictly. Please view the photos and any visual aids you can access thoroughly to ensure that this is a home you are very interested in before registering. Due to the current situation, open homes are attendance limited, if you are unable to register for an inspection, register your interest and you will be notified when/if another open is scheduled.

**** IF YOU DO NOT REGISTER FOR YOUR PRIVATE APPOINTMENT, YOU WILL NOT BE PERMITTED TO ENTER ****

Disclaimer: In preparing this information LJ Hooker has used its best endeavours to ensure that the information contained herein is true and accurate, but accept no responsibility and disclaim all liability in respect of any errors, omissions, inaccuracies or misstatements that may occur. Prospective tenants and buyers should make their own enquiries to verify the information contained herein. *On application, pending owner approval.

Photos used in advertising may differ from the current state of the property. We endeavour to use the most up to date photography, however this may not be feasible to protect our current tenants' privacy. Photos may include the use of virtual furniture.



**LJ Hooker Tamborine Mountain
(07) 5545 1500**

Disclaimer: All information contained therein is gathered from relevant third parties sources. We cannot guarantee or give any warranty about the information provided. Interested parties must rely solely on their own enquiries.

More About this Property

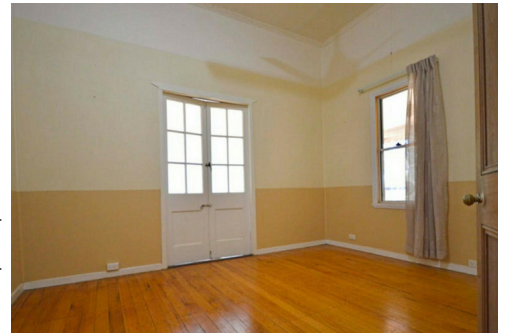
Property ID	HRHZF
Property Type	House
Including	Air Conditioning Secure Parking

Cassie Wealleans

Leasing Manager | leasing.coomera@ljhgc.com.au

LJ Hooker Tamborine Mountain (07) 5545 1500

Shop 1D/17-27 Main Western Road, TAMBORINE MOUNTAIN QLD 4272
tamborinemountain.ljhooker.com.au | tamborinemountain@ljhgc.com.au



**LJ Hooker Tamborine Mountain
(07) 5545 1500**

Disclaimer: All information contained therein is gathered from relevant third parties sources. We cannot guarantee or give any warranty about the information provided. Interested parties must rely solely on their own enquiries.