

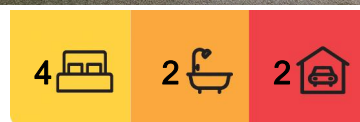
## Takanini, 36 Pateke Drive

### Solid Brick and Tile Home with 4 bedrooms

Lovely, sunny and modern Brick and tile family home with lots of space inside and out. Located at the end of a quiet Cul-de-sac. Close to town, motorway access, and schools.

Features include:

- 4 bedrooms
- 2 bathrooms
- Large internal access double garage plus lots of further off-street parking
- Spacious section with room for kids
- Outdoor entertaining patio with lots of sunlight
- Spacious living area
- Modern kitchen
- In-zone for Alfriston High School



**For Lease**  
Please Call

**View**  
[ljhooker.co.nz/G1AGFC](https://l.jhooker.co.nz/G1AGFC)

**Contact**  
**Michaela Greeves**  
[papakura@ljhooker.co.nz](mailto:papakura@ljhooker.co.nz)



**Disclaimer:** All information contained therein is gathered from relevant third parties sources. We cannot guarantee or give any warranty about the information provided. Interested parties must rely solely on their own enquiries.

**LJ Hooker Papakura**  
**(09) 296 5000**  
Kallil Real Estate Ltd



\*NO PETS ALLOWED

VIEWING INSTRUCTIONS - Please do not enter the property without an agent present. Viewings are strictly by appointment only. In order to conduct a viewing, we will need your full name and contact number. We also would highly recommend that you copy and paste the link below into your browser as this link will take you to a page that allows you to fill in some further information that will help us speed up the process for you.

<https://apply.tenant.co.nz/6400905>

Note that, when applying for a property, all applicants over the age of 18 years must complete their own application form.

#### MOVE-IN COSTS:

\*1st weeks Rent - \$700

\*Bond (4 weeks rent) - \$2800

\*Total - \$3500

#### LANDLORDS - DO YOU NEED A PROPERTY MANAGER?

If you are looking for a property manager, then Contact our office anytime to discuss how we can manage your home and take all of the stress away from you. Contact 09 296 5000 or [papakura@ljhooker.co.nz](mailto:papakura@ljhooker.co.nz).

## More About this Property

Property ID	G1AGFC
Property Type	House
Including	Ensuite
Licensed Real Estate Agents (REAA2008)	

#### Michaela Greeves

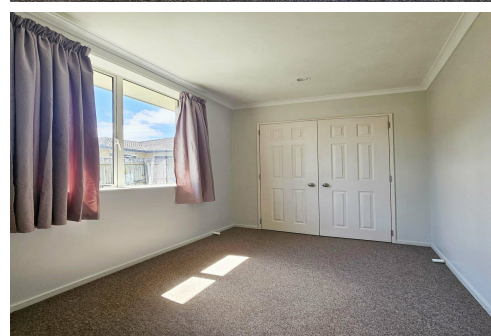
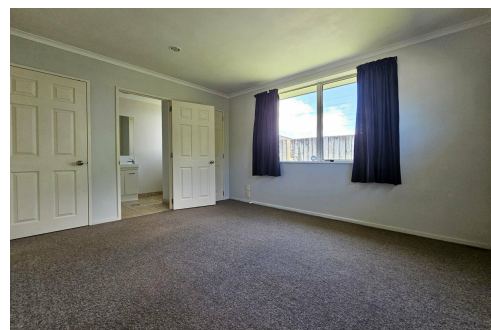
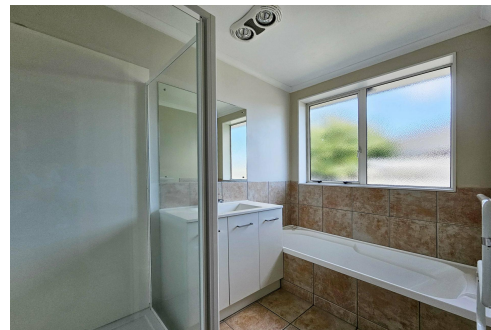
Administration | [papakura@ljhooker.co.nz](mailto:papakura@ljhooker.co.nz)

#### LJ Hooker Papakura (09) 296 5000

Kallil Real Estate Ltd

19 Broadway, PAKAKURA NZ 2110

[papakura@ljhooker.co.nz](mailto:papakura@ljhooker.co.nz) | [papakura@ljhooker.co.nz](mailto:papakura@ljhooker.co.nz)



**Disclaimer:** All information contained therein is gathered from relevant third parties sources. We cannot guarantee or give any warranty about the information provided. Interested parties must rely solely on their own enquiries.

**LJ Hooker Papakura**  
**(09) 296 5000**  
Kallil Real Estate Ltd