

## Subiaco, 415/15 Roydhouse Street

### Urban Sophistication and Refined Living

**UNFURSHIED:** Nestled in the "Encore" complex brilliantly designed by Hillam Architects, this remarkable two-bedroom apartment embodies inner city living in a revitalized central Subiaco locale. Offering urban sophistication and refined living, the residence invites you in from the moment you step through the door. With sleek modern finishes and a well-thought-out layout, this apartment becomes an ideal retreat, inviting you to embrace relaxation and unwind in style.

#### Features Include:

- 2 bedrooms
- 2 bathrooms
- Kitchen / dining
- Living
- Laundry
- 2 Car Stacker



**For Lease**  
Please Call

**View**  
[ljhooker.com.au/3QN6FGJ](http://ljhooker.com.au/3QN6FGJ)

**Contact**  
**Olivia Dangerfield**  
[olivia.dangerfield@ljhooker.com.au](mailto:olivia.dangerfield@ljhooker.com.au)



**Disclaimer:** All information contained therein is gathered from relevant third parties sources. We cannot guarantee or give any warranty about the information provided. Interested parties must rely solely on their own enquiries.

**LJ Hooker City Residential**  
**(08) 9325 0700**

2 x 2m Storeroom

Secure lift / lobby / intercom access into the building

Open plan living, dining and kitchen area

Kitchen with sparkling stone bench top, dishwasher, and microwave nook

Luxurious main bedroom with walk in robe

Ducted reverse cycle air conditioning system

A balcony off the living space

This exceptional residential development places you at Market Lane Subi and Subiaco Square, where everything is within arm's reach. Enjoy the incredible proximity to elite schools, seamless access to Subiaco Train Station, trendy bars and cafes, a lively nightlife, entertainment hubs, expansive local parks, the stunning coastline, the vibrant Perth city centre, Kings Park, Elizabeth Quay, world class medical facilities, the prestigious University of Western Australia and so much more. Calling this location impressive is an understatement it's a spectacular tapestry of unrivalled urban living.

#### SCHOOL CATCHMENTS

Jolimont Primary School

Shenton College (until Bob Hawke intake begins)

Bob Hawke College (year 7 intake started 2020)

\*\*\*TO ARRANGE A VIEWING PLEASE CLICK ON THE 'CONTACT THE AGENT' BUTTON OR THE 'BOOK INSPECTION' BUTTON AND YOU WILL BE SENT AN INSTANT REPLY TO REGISTER FOR THE SCHEDULED VIEWING/S\*\*\*

\*\*\*HOME OPEN TIMES ARE SUBJECT TO CHANGE WITHOUT NOTICE. \*\*\* Please be on time so you have sufficient time to fully view the property and ensure that it meets your requirements as viewing times cannot be extended, so as not to cause delays for the next home open. See You There. \*\*\*

ARE YOU A LANDLORD? If you are looking for property management services, we would love to hear from you. Contact our Business Development Manager Amanda on 0408 269 496 or [amanda.ball@ljhooker.com.au](mailto:amanda.ball@ljhooker.com.au) for a no-obligation and confidential conversation.

## More About this Property

**Property ID** 3QN6FGJ

**Property Type** Apartment

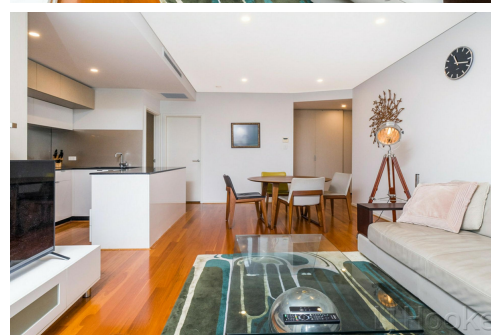
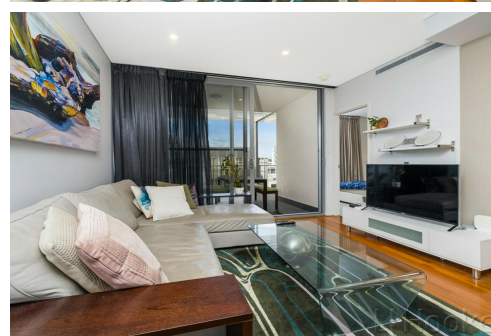
#### Olivia Dangerfield

Leasing Manager | [olivia.dangerfield@ljhooker.com.au](mailto:olivia.dangerfield@ljhooker.com.au)

#### LJ Hooker City Residential (08) 9325 0700

Shop 30, 82 Royal Street, EAST PERTH WA 6004

[cityresperth.ljhooker.com.au](http://cityresperth.ljhooker.com.au) | [cityresperth@ljhooker.com.au](mailto:cityresperth@ljhooker.com.au)



**Disclaimer:** All information contained therein is gathered from relevant third parties sources. We cannot guarantee or give any warranty about the information provided. Interested parties must rely solely on their own enquiries.

**LJ Hooker City Residential**  
**(08) 9325 0700**