

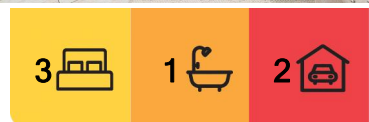
## Strathfield, 34B Arthur Street

Deposit Taken

Whisper Quiet Location!

Perfectly placed in a whisper quiet park side setting adjacent to Pilgrim Park, this single level home presents low maintenance living in a sought after pocket with space, privacy and outdoor lifestyle. Within moments to the vibrant hub of Strathfield train station, shopping centre, parks and within walking distance to a choice of elite schools, inspect before it's too late.

- \* Three bedrooms with built ins and parquetry floors plus attic room/study
- \* Formal lounge and dining plus additional family room flows to outdoors
- \* Undercover alfresco entertaining deck overlooks low maintenance yard
- \* Modern kitchen with dishwasher and internal laundry with second toilet
- \* Period style bathroom / two way ensuite to the master bedroom
- \* High ceilings, picture rails, tiled flooring to the multiple living areas
- \* Zoned ducted air conditioning throughout, private and secure entry



**For Lease**  
Please Call

**View**  
[ljhooker.com.au/RK2FAX](http://ljhooker.com.au/RK2FAX)

**Contact**  
**Yane Ivy Cai**  
0416 811 722  
[ivy@ljhstrathfield.com.au](mailto:ivy@ljhstrathfield.com.au)



**Disclaimer:** All information contained therein is gathered from relevant third parties sources. We cannot guarantee or give any warranty about the information provided. Interested parties must rely solely on their own enquiries.

**LJ Hooker Strathfield**  
**(02) 9746 2222**

- \* Undercover secure carport plus additional secure car space
- \* Direct gate access to Pilgrim Park, ideal for the kids to enjoy
- \* Within catchment area for popular local schools

## More About this Property

**Property ID** RK2FAX

**Property Type** House

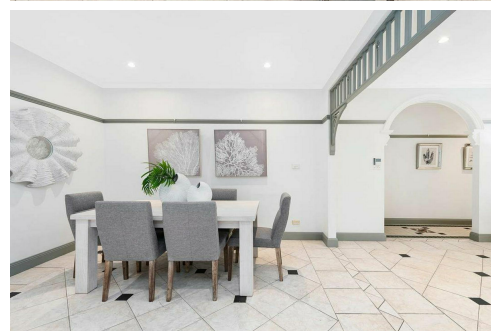
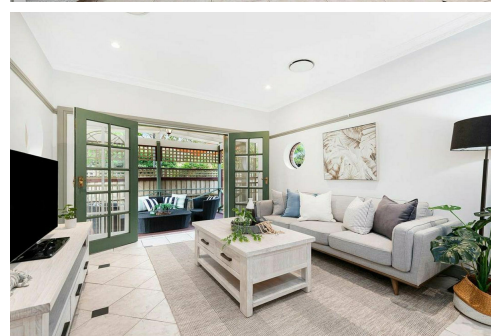
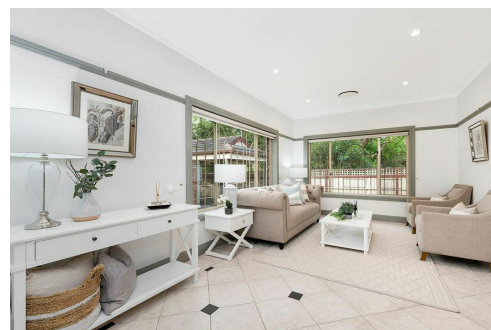
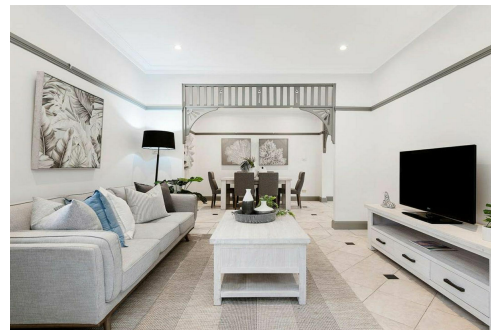
**Yane Ivy Cai 0416 811 722**

Property Investment Manager | [ivy@ljhstrathfield.com.au](mailto:ivy@ljhstrathfield.com.au)

**LJ Hooker Strathfield (02) 9746 2222**

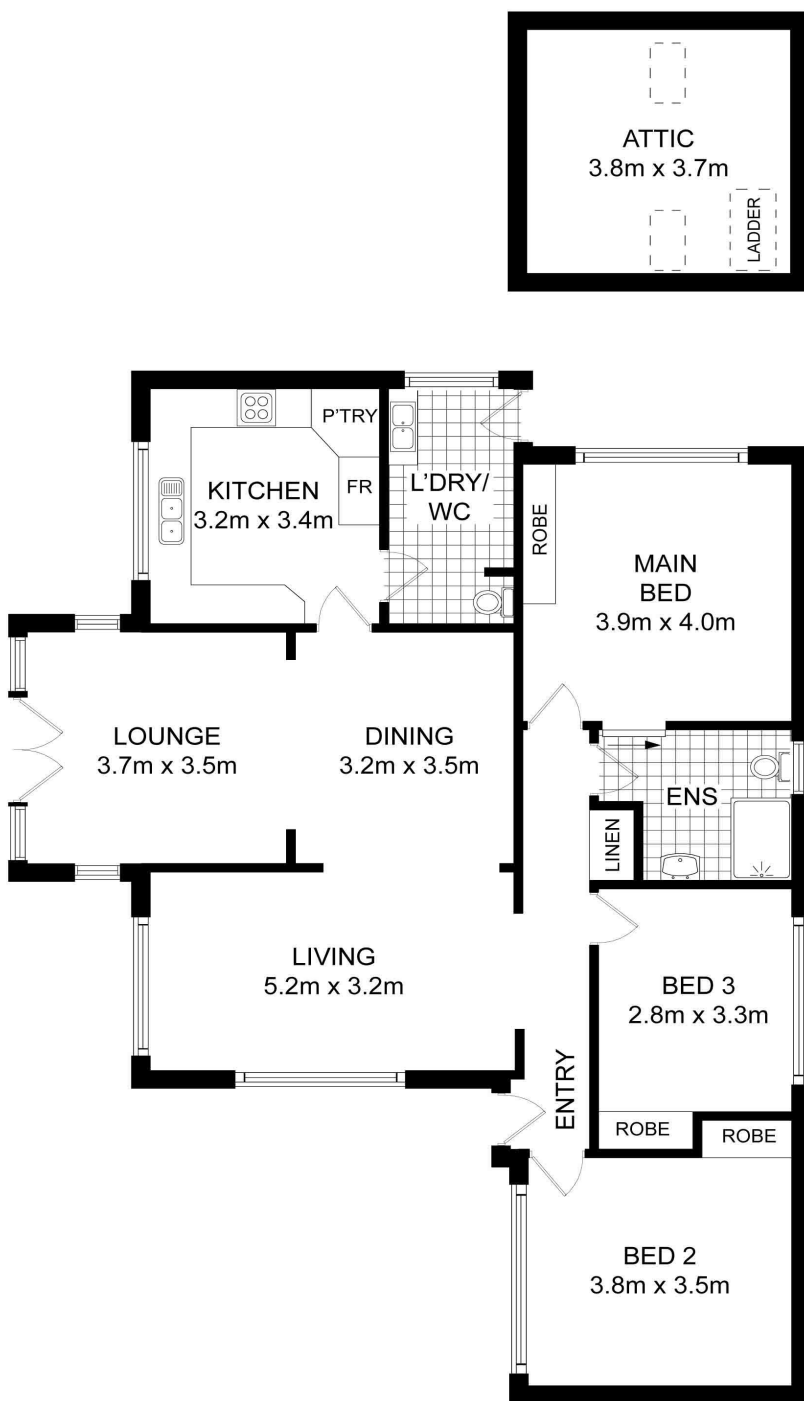
2 Albert Road, STRATHFIELD NSW 2135

[strathfield.ljhooker.com.au](mailto:strathfield.ljhooker.com.au) | [info@ljhstrathfield.com.au](mailto:info@ljhstrathfield.com.au)

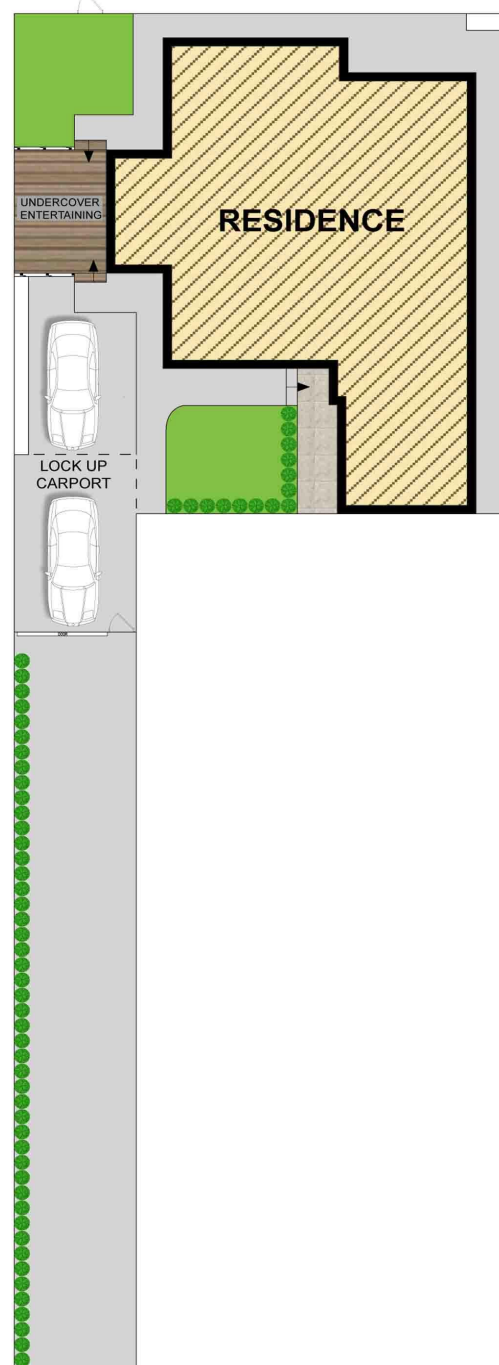


**LJ Hooker Strathfield**  
**(02) 9746 2222**

**Disclaimer:** All information contained therein is gathered from relevant third parties sources. We cannot guarantee or give any warranty about the information provided. Interested parties must rely solely on their own enquiries.



PILGRIM PARK ACCESS



**SITE PLAN  
(NOT TO SCALE)**



**34B ARTHUR STREET,  
STRATHFIELD**

DISCLAIMER: WE HAVE OBTAINED ALL INFORMATION IN THIS DOCUMENT FROM SOURCES WE BELIEVE TO BE RELIABLE; HOWEVER, WE CANNOT GUARANTEE ITS ACCURACY. PROSPECTIVE PURCHASERS ARE ADVISED TO CARRY OUT THEIR OWN INVESTIGATIONS



**LJ Hooker Strathfield  
(02) 9746 2222**

**Disclaimer:** All information contained therein is gathered from relevant third parties sources. We cannot guarantee or give any warranty about the information provided. Interested parties must rely solely on their own enquiries.