



**Leased**



21 Jardine Drive, Springwood

## Charming, low maintenance, family friendly home on sought after street.

Situated on an elevated block in a sought after pocket is the charming, low maintenance, family friendly home. Surrounded by parks and friendly neighbours, Jardine Drive is a well-known street in a wonderful pocket of Springwood.

Featuring three bedrooms all with built in wardrobes and one with air-conditioning. A central bathroom with separate bath and shower services the home, with a separate toilet for convenience. The open plan living and dining space adjoins the well-appointed kitchen and overlooks the private outdoor area, perfect for entertaining.

- Three bedrooms with built in wardrobes and one with air con
- Large formal living room
- Spacious airconditioned open plan living & dining area
- Well appointed kitchen with lots of storage and bench space
- Modern bathroom with separate toilet
- Air conditioned and insulated
- Private pergola

3 1 2

### FOR RENT

Please Call

### AGENTS

Sarah Ross  
0423731173  
shailerpark@ljhooker.com.au

### AGENCY

LJ Hooker Shailer Park  
(07) 3102 0829

All information contained therein is gathered from relevant third parties sources. We cannot guarantee or give any warranty about the information provided. Interested parties must rely solely on their own enquiries.



Low maintenance landscaped block  
Elevated position —Perfectly positioned to catch the breeze and maintain privacy  
Lock up Garage with remote control access

Ideally located within close proximity to excellent schools like John Paul College, Redeemer Lutheran College, St Edwards Catholic Primary, Calvary Christian College and, popular shopping spots such as the newly renovated Chatswood Central Retail Centre, Springwood & Arndale Shopping Centres, IKEA and the Hyperdome Shopping Mall. All of this and only 26 minutes from the CBD!

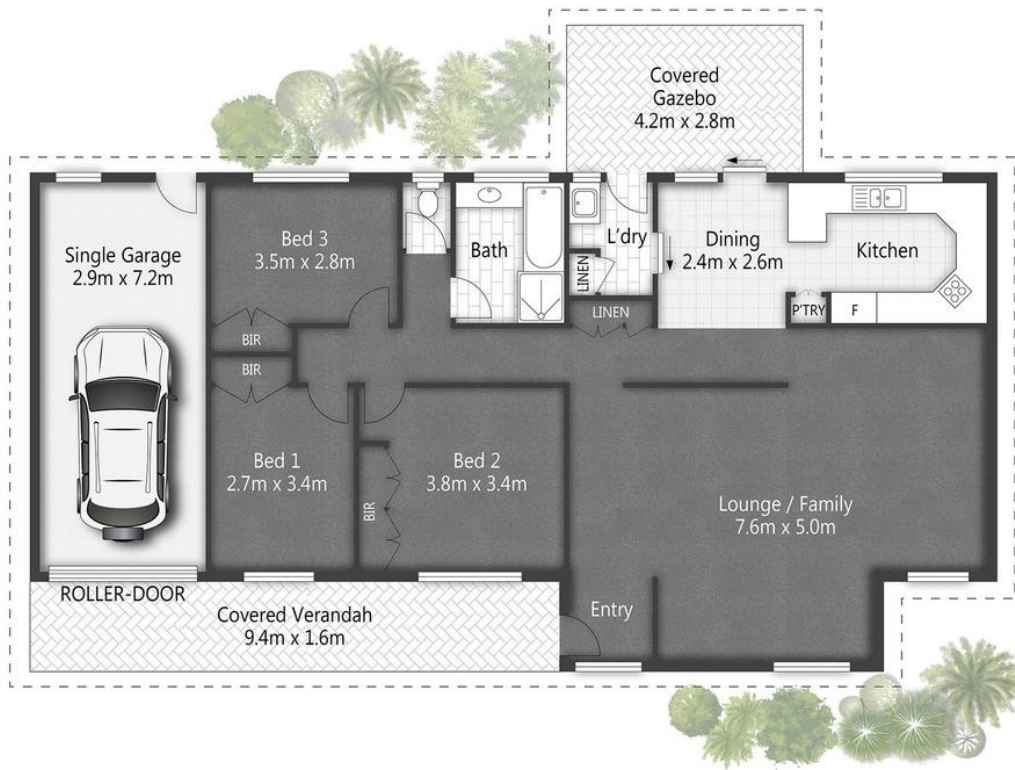
## MORE DETAILS

Property ID	6EDHVG
Property Type	House
Including	Built-in-Robes Secure Parking Remote Garage

**Sarah Ross 0423731173**  
Senior Property Manager / Office Manager |  
shailerpark@ljhooker.com.au

**LJ Hooker Shailer Park (07) 3102 0829**  
2/3 Mandew Street, SHAILER PARK QLD 4128  
shailerpark.ljhooker.com.au | shailerpark@ljhooker.com.au





21 Jardine Drive **SPRINGWOOD**

3 | 1 | 1 | 132m<sup>2</sup>



All dimensions are approximate; they are subject to errors and inaccuracies and no liability will be accepted. Plans are shown for marketing purposes only.

All information contained therein is gathered from relevant third parties sources. We cannot guarantee or give any warranty about the information provided. Interested parties must rely solely on their own enquiries.

