

Springwood, 21 Jardine Drive

Charming, low maintenance, family friendly home on sought after street.

Situated on an elevated block in a sought after pocket is the charming, low maintenance, family friendly home. Surrounded by parks and friendly neighbours, Jardine Drive is a well-known street in a wonderful pocket of Springwood.

Featuring three bedrooms all with built in wardrobes and one with air-conditioning.

A central bathroom with separate bath and shower services the home, with a separate toilet for convenience. The open plan living and dining space adjoins the well-appointed kitchen and overlooks the private outdoor area, perfect for entertaining.

3

1

3

For Lease

Please Call

View

ljhooker.com.au/5S9HVG



LJ Hooker Shailer Park
(07) 3102 0829

Disclaimer: All information contained therein is gathered from relevant third parties sources. We cannot guarantee or give any warranty about the information provided. Interested parties must rely solely on their own enquiries.

Three bedrooms with built in wardrobes and one with air con
 Large formal living room
 Spacious airconditioned open plan living & dining area
 Well appointed kitchen with lots of storage and bench space
 Modern bathroom with separate toilet
 Air conditioned and insulated
 Private pergola
 Low maintenance landscaped block
 Elevated position — Perfectly positioned to catch the breeze and maintain privacy
 Lock up Garage with remote control access

Ideally located within close proximity to excellent schools like John Paul College, Redeemer Lutheran College, St Edwards Catholic Primary, Calvary Christian College and, popular shopping spots such as the newly renovated Chatswood Central Retail Centre, Springwood & Arndale Shopping Centres, IKEA and the Hyperdome Shopping Mall. All of this and only 26 minutes from the CBD!

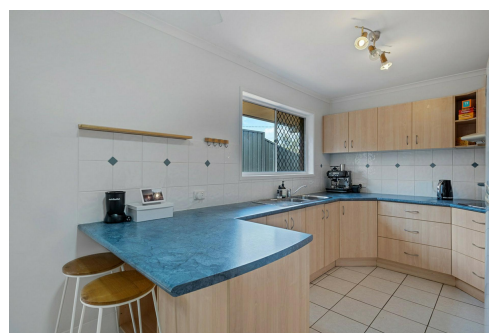
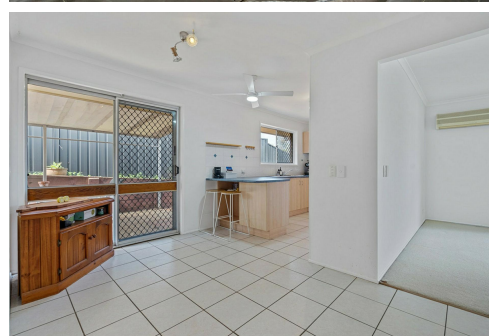
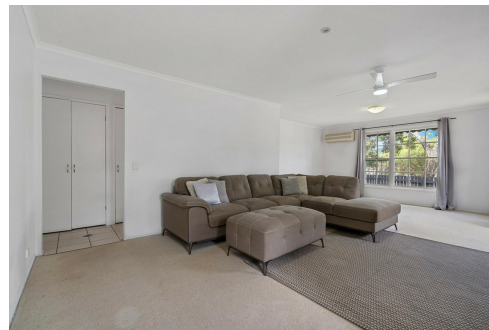
More About this Property

Property ID	5S9HVG
Property Type	House
Land Area	612 sqm
Including	Built-in-Robes Secure Parking Remote Garage

LJ Hooker Shailer Park (07) 3102 0829

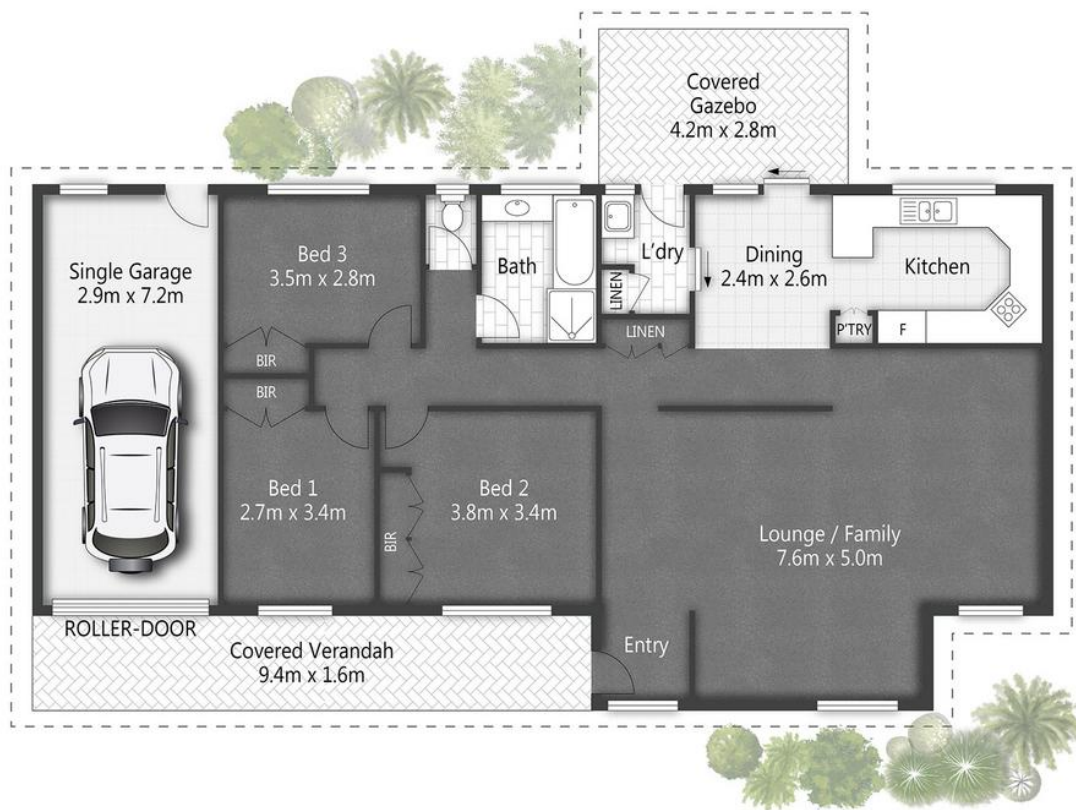
2/3 Mandew Street, SHAILER PARK QLD 4128

shailerpark.ljhooker.com.au | shailerpark@ljhooker.com.au



Disclaimer: All information contained therein is gathered from relevant third parties sources. We cannot guarantee or give any warranty about the information provided. Interested parties must rely solely on their own enquiries.

LJ Hooker Shailer Park
(07) 3102 0829



21 Jardine Drive **SPRINGWOOD**

3 | 1 | 1 | 132m²



All dimensions are approximate; they are subject to errors and inaccuracies and no liability will be accepted.
Plans are shown for marketing purposes only.



LJ Hooker Shailer Park
(07) 3102 0829

Disclaimer: All information contained therein is gathered from relevant third parties sources.
We cannot guarantee or give any warranty about the information provided. Interested parties must rely solely on their own enquiries.