

Southport, 8 Ridgeway Avenue

FAMILY LIFESTYLE OASIS IN THE HEART OF THE GOLD COAST

Highlighted by superb living and entertaining spaces, this fully renovated residence has been cleverly upgraded and designed to deliver a relaxed family retreat of quality, space and blissful privacy - in an ideal central location. It combines a generous and light-filled layout and oasis-like outdoor areas to make an entertainer's paradise with an emphasis on easy maintenance living.

The generous two-level design of the home is perfect for families and offers a user-friendly layout with a bright open living space featuring beautifully polished hardwood floors. Four bedrooms include a main with ensuite and access to a deck, and a fourth bedroom/home office, plus there is a quality kitchen with breakfast bar and modern appliances.

4

3

3

For Lease

Please Call

View

ljhooker.com.au/Z29F4K

Contact

Veronica Guilfoyle

0405 185 407

pim2.southport@ljhooker.com.au



LJ Hooker Southport
(07) 5591 5222

Disclaimer: All information contained therein is gathered from relevant third parties sources. We cannot guarantee or give any warranty about the information provided. Interested parties must rely solely on their own enquiries.

Step outside onto the large alfresco deck and you can entertain in perfect privacy and enjoy an elevated outlook with views towards Surfers Paradise. There is an inviting saltwater swimming pool along with an undercover entertainment patio and poolside garden that's perfect for kids or pets. In addition, the lower level has been equipped with a kitchenette and bathroom, making it perfect for a dual living arrangement or guest accommodation, complete with a lock-up garage, storeroom and carport at the side.

A peaceful sanctuary is the result in the flourishing South Gold Coast bordering the highly sought-after The Southport School and just a few minutes from Southport Spit, Ferry Rd markets, Main Beach and Surfers.

Features include:

- Smartly renovated dual-level home with elevated district views
- Light and airy design with an open living area and high ceilings
- Easy flow from the indoors to a large alfresco deck and BBQ area
- Four double-bedrooms, three with built-ins, main with ensuite
- Saltwater pool, poolside entertainment patio and private garden
- Self-contained downstairs level with kitchenette and bathroom
- A lock-up garage, carport and loads of storage throughout
- 4.8kW high quality solar panels, air-conditioning and good security

In the TSS precinct, minutes to beaches, Southport Spit and Ferry Rd markets

Open homes are subject to change, so please ensure that you book into the inspection to receive SMS and email alerts about any changes.

Are pets allowed at this property? Negotiable

Do I have to pay for water supplied to this property? Negotiable

Do I have to maintain the lawns and gardens? Negotiable

Do I have to maintain the pool? Negotiable

What is the lease term offered? 6 or 12 months preferred

Disclaimer: We have, in preparing this information, used our best endeavours to ensure that the information contained herein is true and accurate, but we accept no responsibility and disclaim all liability in respect of any errors, inaccuracies or misstatements contained herein.



LJ Hooker Southport
(07) 5591 5222

Disclaimer: All information contained therein is gathered from relevant third parties sources. We cannot guarantee or give any warranty about the information provided. Interested parties must rely solely on their own enquiries.

More About this Property

Property ID	Z29F4K
Property Type	House
Land Area	506 sqm
Including	Ensuite Air Conditioning Toilets (1) Balcony Dishwasher Outdoor Entertaining Solar Panels

Veronica Guilfoyle

Property Investment Manager | pim2.southport@ljhooker.com.au

LJ Hooker Southport (07) 5591 5222

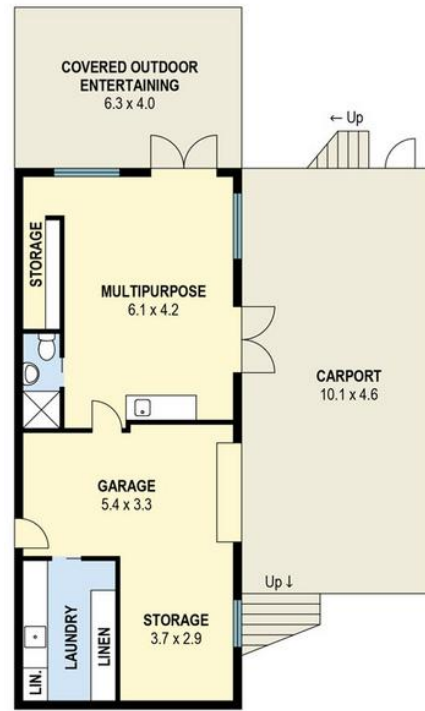
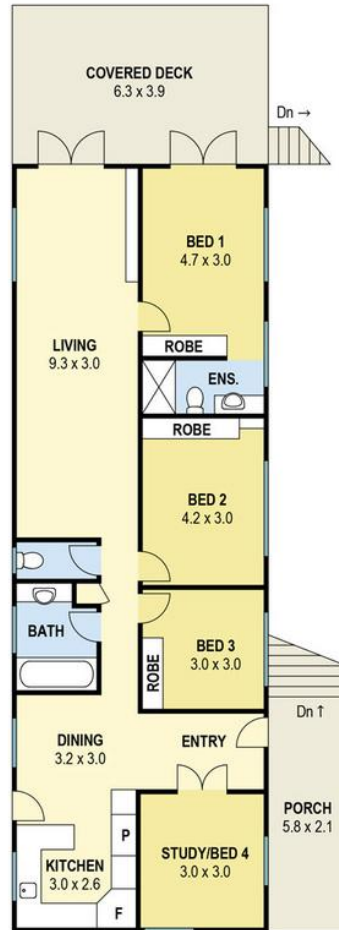
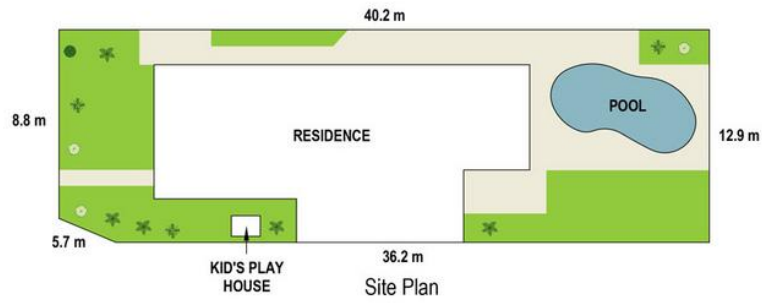
2308-2309 Level 3 Southport Central, Tower 2, 5 Lawson Street,
SOUTHPORT QLD 4215

southport@ljhooker.com.au | southport@ljhooker.com.au



LJ Hooker Southport
(07) 5591 5222

Disclaimer: All information contained therein is gathered from relevant third parties sources.
We cannot guarantee or give any warranty about the information provided. Interested parties must rely solely on their own enquiries.



8 RIDGEWAY AVENUE, SOUTHPORT

INTERNAL AREA: 201 m²
EXTERNAL AREA: 110 m²
TOTAL AREA: 311 m²

Scale in metres. Indicative only. Dimensions are approximate. All information contained here in is gathered from sources we believe to be reliable. However we cannot guarantee its accuracy and interested persons should rely on their own enquiries.