



1 Akes Avenue, Southport

Stunning Family Home in TSS / Southport CBD Precinct

This modern home offers space, functionality, and a great indoor-outdoor lifestyle and has been thoughtfully designed to suit families and those who love to entertain. With multiple living areas and a well designed two level layout, the home provides both separation and flexibility, ensuring comfort and convenience for everyday living.

Tucked away in a peaceful pocket of the Southport TSS precinct, this is a true hidden gem. Positioned on a quiet cul-de-sac adjacent to a nature park, the setting offers a sense of privacy while still being close to everything you need. Enjoy being just minutes from the Gold Coast Broadwater, The Southport School, and Ferry Road Markets, with easy access to local cafés, shops, and amenities.

Property Features

- Renovated throughout with premium finishes
- Five spacious bedrooms
- Master with walk-in robe and ensuite
- Three bathrooms including main with bathtub
- Multiple living areas across two levels
- Upstairs additional lounge/family room
- Open-plan kitchen, living and dining

5 🚗 3 🚗 2 🚗

FOR RENT

Please Call

AGENTS

Elle Osborne

0410 992 602

eosborne.southport@ljhooker.com.au

AGENCY

LJ Hooker Southport

(07) 5591 5222

All information contained therein is gathered from relevant third parties sources. We cannot guarantee or give any warranty about the information provided. Interested parties must rely solely on their own enquiries.



- " Large kitchen with island bench and pantry
- " Expansive covered alfresco —perfect for entertaining
- Separate internal laundry
- Ample storage and linen space
- Swimming Pool
- Double carport (6m x 6m)

Location Highlights

- Minutes to the Broadwater Parklands, The Southport School (TSS) Private boys' boarding school, St Hilda's private girls' boarding school, Ferry Road markets, HOTA (Home of the Arts) * Short stroll to restaurants, cafes, and shops
- 5 min walk to the Gold Coast light rail
- minute walk to the Nerang River & Gold Coast Broadwater
- Parklands and dog off leash areas
- Close to Australia Fair Shopping Centre for shopping and dining
- Easy access to the Gold Coast CBD
- Nearby quality schools including The Southport School and St Hilda's School
- Convenient public transport options including G:link light rail
- Short drive to beaches and coastal lifestyle precincts

Open homes are subject to change, so please ensure that you book into the inspection to receive SMS and email alerts about any changes.

Tenants Frequently Asked Questions:

Do I have to pay for water usage? Yes

Do I have to maintain the lawn and garden? Yes

Is the property furnished or unfurnished? unfurnished

What is the initial lease term length offered? To be confirmed upon application

Disclaimer: While every effort has been made to ensure the accuracy and reliability of the information provided, we make no representations or warranties, express or implied, as to its completeness or correctness. We accept no responsibility and disclaim all liability for any errors, omissions, or inaccuracies. Prospective parties should conduct their own investigations to verify the information before making any decisions.

MORE DETAILS

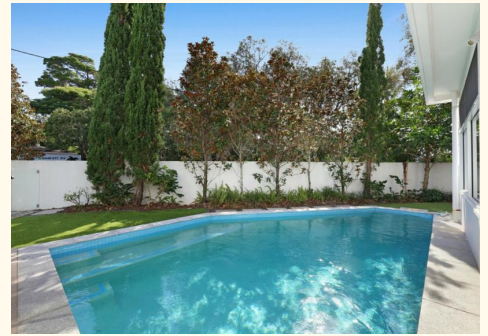
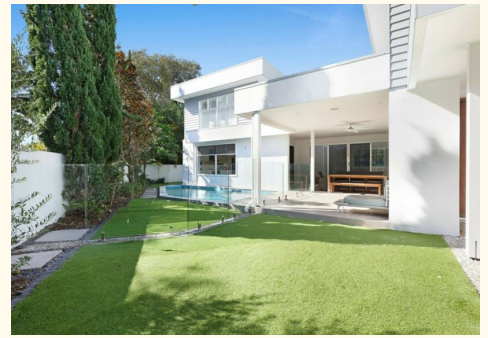
Property ID 10PTF4K
Property Type House

Elle Osborne 0410 992 602

Business Development Manager |
eosborne.southport@ljhooker.com.au

LJ Hooker Southport (07) 5591 5222

2308-2309 Level 3 Southport Central, Tower 2, 5 Lawson Street,
SOUTHPORT QLD 4215
southport.ljhooker.com.au | southport@ljhooker.com.au





5 Bed 3 Bath 2 Car

Internal 247m² | External 81m² | Total 328m²

This floor plan is for marketing purposes only. Dimensions and layout are approximate. Mountfort Media gives no guarantee or warranty over the accuracy of this plan.

All information contained therein is gathered from relevant third parties sources. We cannot guarantee or give any warranty about the information provided. Interested parties must rely solely on their own enquiries.

