

## Southbank, 3809/45 Clarke Street

### 2-bedroom apartment In Southbank Platinum

\*Fully Furnished Option is Available at Extra Cost

Platinum Tower is situated in the heart of Southbank, a stone throw away from the Crown Entertainment Complex, South Melbourne Market, the shops along Clarendon Street and Melbourne's top schools.

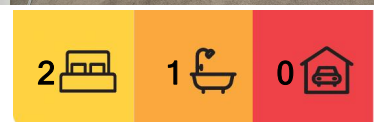
This 2-bedroom and 1-bathroom apartment located at the 38th floor gives you breathtaking view from the balcony. The facilities include communal gardens with BBQ entertainment areas for residents, heated pool and fully-equipped gymnasium, Sky Lounge, Sky Bar and Private Dining Room at Level 52.

\*\*\*\*\*Arranging an inspection is easy!\*\*\*\*\*

To book a time to inspect, simply click on the Book an Inspection Time button OR click Contact Agent, email through your details so we can reply with available appointment



**Disclaimer:** All information contained therein is gathered from relevant third parties sources. We cannot guarantee or give any warranty about the information provided. Interested parties must rely solely on their own enquiries.



**For Lease**

\$650 and Fully Furnished Option At Extra pw

**View**

By Appointment

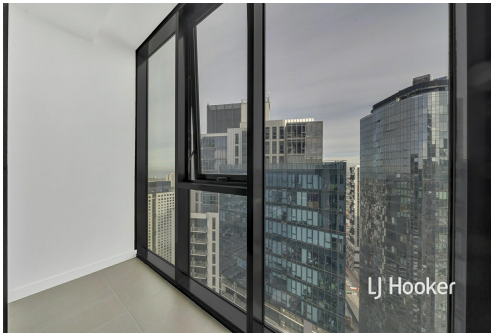
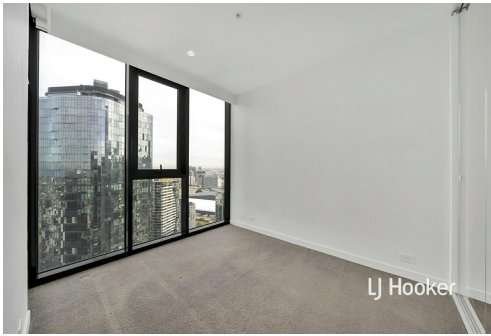
**LJ Hooker City Residential**  
(03) 9600 2166

times for you to register to inspect. By registering, you will be INSTANTLY informed of any updates, changes or cancellations for your appointment

## More About this Property

Property ID	NVXHC2
Property Type	Apartment
Including	Close to Shops

**LJ Hooker City Residential (03) 9600 2166**  
Upper Ground Floor, 439-445 Lonsdale St, MELBOURNE VIC 3000  
[cityresmelbourne.ljhooker.com.au](http://cityresmelbourne.ljhooker.com.au) | [cityresmelbourne@ljhooker.com.au](mailto:cityresmelbourne@ljhooker.com.au)



**Disclaimer:** All information contained therein is gathered from relevant third parties sources. We cannot guarantee or give any warranty about the information provided. Interested parties must rely solely on their own enquiries.

**LJ Hooker City Residential**  
**(03) 9600 2166**