



LJ Hooker  
City Residential



LJ Hooker  
City Residential



LJ Hooker  
City Residential



LJ Hooker  
City Residential

## Southbank, 1208/22 Dorcas Street

### Spacious 1-Bedroom Apartment for Lease!

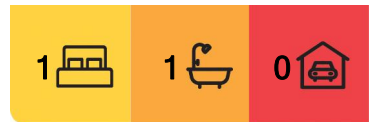
Elm Apartment is situated in close proximity to South Melbourne market, as well as several cafes and restaurants in the surrounding area.

This apartment has a capacious and well-illuminated living space. It features a built-in wardrobe in the bedroom, a split system installed in the living area and stainless-steel appliances including a dishwasher. The bedroom floor is carpeted, providing a fresh and comfortable feel.

The apartment is also equipped with a video intercom system, providing enhanced security. A Euro-style laundry is included as well.

\*\*\*\*Arranging an inspection is easy!\*\*\*\*

To book a time to inspect, simply click on the Book an Inspection Time button OR click Contact Agent, email through your details so we can reply with available appointment



**For Lease**  
Please Call

**View**  
[ljhooker.com.au/N31HC2](http://ljhooker.com.au/N31HC2)

**Contact**  
**Ricky Wang**  
0450 626 998  
[leasing.cityresmelbourne@ljhooker.com.au](mailto:leasing.cityresmelbourne@ljhooker.com.au)



**LJ Hooker City Residential**  
**(03) 9600 2166**

**Disclaimer:** All information contained therein is gathered from relevant third parties sources. We cannot guarantee or give any warranty about the information provided. Interested parties must rely solely on their own enquiries.

times for you to register to inspect. By registering, you will be INSTANTLY informed of any updates, changes or cancellations for your appointment.

## More About this Property

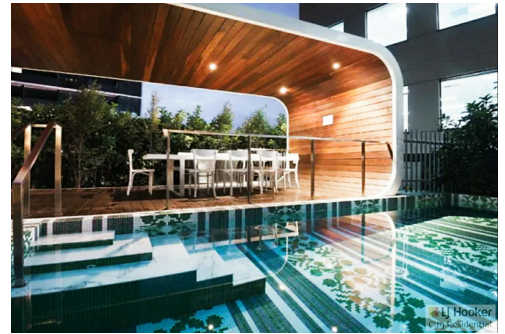
<b>Property ID</b>	N31HC2
<b>Property Type</b>	Apartment
<b>Including</b>	Creative

**Ricky Wang 0450 626 998**

Property Investment Manager | [leasing.cityresmelbourne@ljhooker.com.au](mailto:leasing.cityresmelbourne@ljhooker.com.au)

**LJ Hooker City Residential (03) 9600 2166**

Upper Ground Floor, 439-445 Lonsdale St, MELBOURNE VIC 3000  
[cityresmelbourne.ljhooker.com.au](http://cityresmelbourne.ljhooker.com.au) | [cityresmelbourne@ljhooker.com.au](mailto:cityresmelbourne@ljhooker.com.au)



**LJ Hooker City Residential**  
**(03) 9600 2166**

**Disclaimer:** All information contained therein is gathered from relevant third parties sources. We cannot guarantee or give any warranty about the information provided. Interested parties must rely solely on their own enquiries.



ALL INFORMATION CONTAINED HERE IN IS GATHERED FROM SOURCES WE BELIEVE TO BE RELIABLE. HOWEVER WE CANNOT GUARANTEE ITS ACCURACY AND INTERESTED PERSONS SHOULD RELY ON THEIR OWN ENQUIRES. DIMENSTIONS ARE APPROXIMATE.