

Southbank, 1006A/60 Dorcas Street

Fantastic 1-bedroom apartment in Southbank for lease!

*Fully Furnished Option is Available at Extra Cost

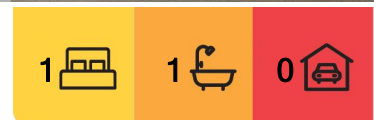
Exemplary design inspired by 6-star resorts and luxury hotels, The Evermore is focused on providing upmarket residential experiences via the public and private spaces spread throughout the building.

- A rich use of natural materiality is evident throughout The Evermore interiors.
- The kitchen features natural stone and timber materials, as well as copious storage solution and the latest Miele appliances.
- The bathroom is capacious with brass tapware, while timber floors grace the living areas and bedroom is fitted with warm, woolen carpets.

Lush tropical gardens are interspersed throughout the project, landscaped with flourishing fronds and foliage to soften the space and calm the soul.



Disclaimer: All information contained therein is gathered from relevant third parties sources. We cannot guarantee or give any warranty about the information provided. Interested parties must rely solely on their own enquiries.



For Lease

\$540 and Fully Furnished Option At Extra pw

View

By Appointment

LJ Hooker City Residential
(03) 9600 2166

From the 14.5m open-air pool with sun lounges and cabanas and a high-tech gymnasium to a study, library and lounge - and even a Gold class cinema - the anything-but-common shared areas will treat residents with exemplary experiences.

Located only 2km from the CBD and in the center of Melbourne's world-class arts and cultural precinct is the stylish Guild apartment complex. Just a short stroll to the tranquil Royal Botanical Gardens, 5 minutes to South Melbourne Market and a plethora of transport options. This is truly an unrivaled metropolitan living at its best!

*****Arranging an inspection is easy!*****

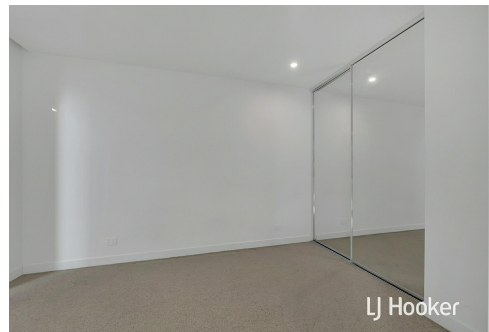
To book a time to inspect, simply click on the Book an Inspection Time button OR click Contact Agent, email through your details so we can reply with available appointment times for you to register to inspect. By registering, you will be INSTANTLY informed of any updates, changes or cancellations for your appointment. Please note that photo ID is required at all times of inspection.

More About this Property

Property ID	NSKHC2
Property Type	Apartment

LJ Hooker City Residential (03) 9600 2166

Upper Ground Floor, 439-445 Lonsdale St, MELBOURNE VIC 3000
cityresmelbourne.ljhooker.com.au | cityresmelbourne@ljhooker.com.au



Disclaimer: All information contained therein is gathered from relevant third parties sources. We cannot guarantee or give any warranty about the information provided. Interested parties must rely solely on their own enquiries.

LJ Hooker City Residential
(03) 9600 2166