



South Plympton, 605 Marion Road

Charming and Convenient Living in South Plympton!

2 1 2

INSPECTION TIMES- To inspect this property please click the "Request a Time" Or "Book an Inspection" button below. You will be notified of future inspections times and updates. Once registration has been completed you will be sent an email with instructions on how to apply. PRE APPLICANTS WELCOME BUT APPLICATIONS WONT BE PROCESSED UNTIL THE PROPERTY HAS BEEN VIEWED

For Lease
\$595 per week

View
By Appointment

Contact
Russell Payne
russell@ljhfp.com.au

Discover this charming 2-bedroom, 1-bathroom residence at 605 Marion Road, South Plympton, offering comfortable and open living spaces. This cozy home is perfect for individuals couples or small families seeking a well-maintained property in a fantastic location.

Featuring:

- Spacious living room with ample natural light



Disclaimer: All information contained therein is gathered from relevant third parties sources. We cannot guarantee or give any warranty about the information provided. Interested parties must rely solely on their own enquiries.

LJ Hooker Flinders Park
(08) 8352 1155

- Modern kitchen with gas cooktop, plenty of storage, and bench space
- Reverse cycle heating and cooling for year-round comfort
- Separate laundry area
- Private outdoor courtyard and backyard, perfect for entertaining or relaxing
- Secure garaged parking
- Stylish bathroom with both a shower and bathtub

South Plympton is a highly sought-after suburb known for its convenience and friendly community atmosphere. Enjoy easy access to local parks, schools, and shopping centres. With excellent public transport links, you'll be just a short commute to the CBD and beautiful Glenelg Beach.

School Catchment Zones:

[\[https://www.education.sa.gov.au/parents-and-families/enrol-school-or-preschool/find-a-school-zone-or-preschool-catchment-area\]](https://www.education.sa.gov.au/parents-and-families/enrol-school-or-preschool/find-a-school-zone-or-preschool-catchment-area)[\]\(https://www.education.sa.gov.au/parents-and-families/enrol-school-or-preschool/find-a-school-zone-or-preschool-catchment-area\)](https://www.education.sa.gov.au/parents-and-families/enrol-school-or-preschool/find-a-school-zone-or-preschool-catchment-area)

(We take no responsibility for the information given by the school zone locator and you should always make your own inquiries with the school directly)

- **GAS heater excluded from the lease
- 12 month lease
- Tenant to maintain front and back yard
- Water use and supply charges apply to the tenant

Tayla McLeod
 Property Manager
 LJ Hooker Flinders Park
 Taylam@ljhfp.com.au

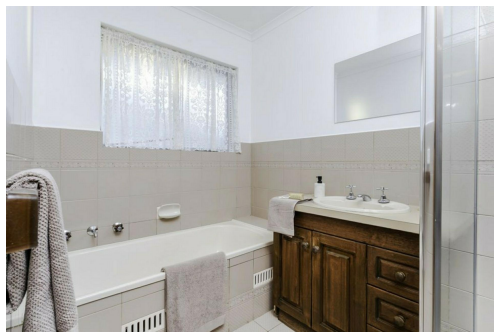
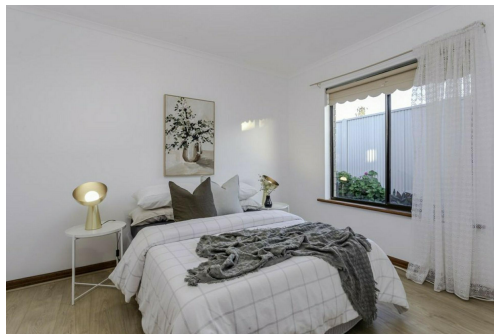
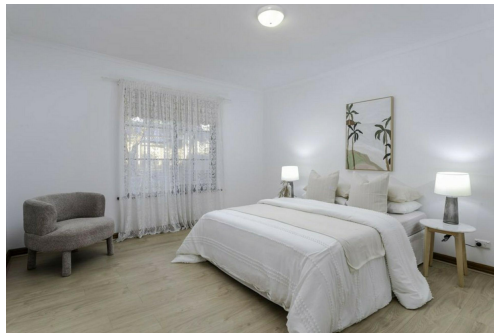
RLA 215339

More About this Property

Property ID	JE9H67
Property Type	Unit
Including	Toilets (1)

Russell Payne
 Department Manager - Property Management | russell@ljhfp.com.au

LJ Hooker Flinders Park (08) 8352 1155
 Suite 2/166-168 Grange Road, FLINDERS PARK SA 5025
 flinderspark.ljhooker.com.au | flinderspark@ljhfp.com.au



Disclaimer: All information contained therein is gathered from relevant third parties sources. We cannot guarantee or give any warranty about the information provided. Interested parties must rely solely on their own enquiries.

LJ Hooker Flinders Park
(08) 8352 1155