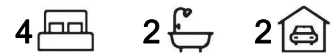


## South Guildford, 59 Lockhart Crescent

### Modern Near New Spacious Family Home



**UNFURNISHED:** This spacious house is what your family always wanted. This stunning 4 bedroom 2 bathroom single-level home boasts a huge floor plan that will comfortably appease everybody's personal needs. This house is perfectly located in the prestigious "Rosehill Waters Estate". It has a large master bedroom with walk in robe and en-suite bathroom, 3 other spacious bedrooms with robe and 2 bathrooms. An open space living area with access to low maintenance backyard with alfresco is perfect for entertaining.

Walking distance to Rosehill Park - Walking distance to transport, schools and shops - 5min to the Swan Valley - 15min to CBD - 15min to Crown - 10 min to the Airport - Walking distance to everything Guildford has to offer from coffee shops, historical landmarks and antique stores. Living in South Guildford is a life style choice you won't regret, ideal for families relocating to Perth.

Offering a long list of features including:



**Disclaimer:** All information contained therein is gathered from relevant third parties sources. We cannot guarantee or give any warranty about the information provided. Interested parties must rely solely on their own enquiries.

**For Lease**  
\$900 Per Week

**View**  
By Appointment

**Contact**  
**Olivia Dangerfield**  
olivia.dangerfield@ljhooker.com.au

**LJ Hooker City Residential**  
**(08) 9325 0700**

- \* Master Bedroom with walk in robes and en-suite bathroom
- \* Three other spacious bedrooms with built in robes
- \* Spacious, stylish kitchen including stainless steel appliances, large oven & induction hotplate & stone bench tops
- \* Dishwasher
- \* Two modern bathrooms with large shower recess
- \* A separated Media & Study Room
- \* Air Conditioning
- \* Double lock up garage

\*\*\*TO ARRANGE A VIEWING PLEASE CLICK ON THE 'CONTACT THE AGENT' BUTTON OR THE 'BOOK INSPECTION' BUTTON AND YOU WILL BE SENT AN INSTANT REPLY TO REGISTER FOR THE SCHEDULED VIEWING/S\*\*\*

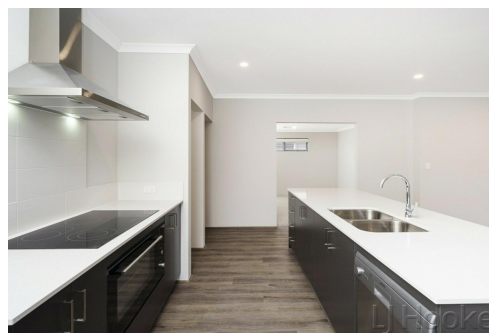
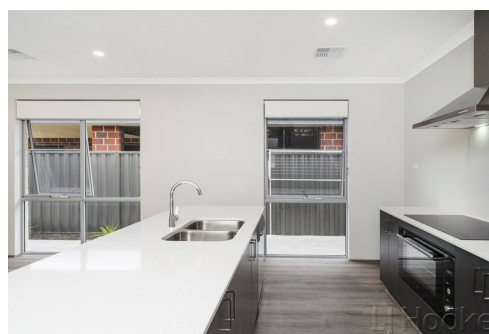
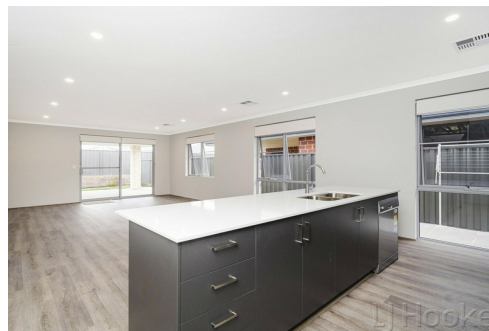
\*\*\*HOME OPEN TIMES ARE SUBJECT TO CHANGE WITHOUT NOTICE.\*\*\* Please be on time so you have sufficient time to fully view the property and ensure that it meets your requirements as viewing times cannot be extended, so as not to cause delays for the next home open. See You There.\*\*\*

## More About this Property

<b>Property ID</b>	3SDGFGJ
<b>Property Type</b>	House
<b>Including</b>	Ensuite Air Conditioning Toilets (2) Remote Garage Liveability

**Olivia Dangerfield**  
 Leasing Manager | olivia.dangerfield@ljhooker.com.au

**LJ Hooker City Residential (08) 9325 0700**  
 Shop 30, 82 Royal Street, EAST PERTH WA 6004  
 cityresperth.ljhooker.com.au | hello@ljhpxp.com.au



**LJ Hooker City Residential**  
**(08) 9325 0700**

**Disclaimer:** All information contained therein is gathered from relevant third parties sources. We cannot guarantee or give any warranty about the information provided. Interested parties must rely solely on their own enquiries.