



Somerton Park, 29 Gilbert Road

Spacious & Stylish Family Living in Prime Somerton Park

CLICK ON "GET IN TOUCH" TO REGISTER FOR AN OPEN INSPECTION WITH US. You will then be contacted by email to confirm your registration for the open inspection.

This beautifully updated four-bedroom home offers the space, comfort, and location your family has been searching for. Perfectly positioned in the heart of Somerton Park, you're just moments from the vibrant Jetty Road precinct, pristine beaches, local cafes, restaurants, and shopping-everything you need is right at your doorstep.

Step inside and be greeted by a light-filled entryway with stunning timber flooring that flows through to a generous family room and a sleek, recently renovated kitchen, complete with modern appliances and ample storage-ideal for everyday living and entertaining.

All four bedrooms are generously sized, three featuring built-in robes for added convenience. With fresh interiors and a versatile floorplan, this home is move-in ready.



Disclaimer: All information contained therein is gathered from relevant third parties sources. We cannot guarantee or give any warranty about the information provided. Interested parties must rely solely on their own enquiries.

4 2 4

For Lease
Please Call

View
ljhooker.com.au/Q2XGW0

Contact
Rebecca Henry
0412 681 714
rebecca@ljhglenelgbrighton.com.au

LJ Hooker Glenelg | Brighton
(08) 8294 6000

Outside, enjoy a large backyard perfect for kids to run and play, plus a spacious shed for storage and undercover parking for two vehicles, with additional space for two more in the driveway.

Don't miss this opportunity to secure a fantastic family home in one of Adelaide's most sought-after suburbs. Properties like this don't last long!

KEY FEATURES

- Four Generous Sized Bedrooms
- Modern Kitchen
- Brighton High School Zoned

LEASE TERM: 12 Months

AVAILABLE FROM: 9 May 2025

WATER CHARGES: Tenant to pay supply and water use

PET POLICY: Negotiable

INSPECTION: Register to view

Would you like to view this property? Please register to attend our scheduled open inspection for this property by using the 'Request an inspection time' button below. To avoid disappointment, we encourage you to register your interest so we can keep you informed during all stages of the leasing process.

All information provided has been obtained from sources we believe to be accurate, however, we cannot guarantee the information is accurate and we accept no liability for any errors or omissions (including but not limited to a property's land size, floor plans and size, building age and condition) Interested parties should make their own enquiries and obtain their own legal advice.

RLA 277721

More About this Property

Property ID	Q2XGW0
Property Type	House

Rebecca Henry 0412 681 714

Business Development Manager & Operations Manager |
rebecca@ljhglenelgbrighton.com.au

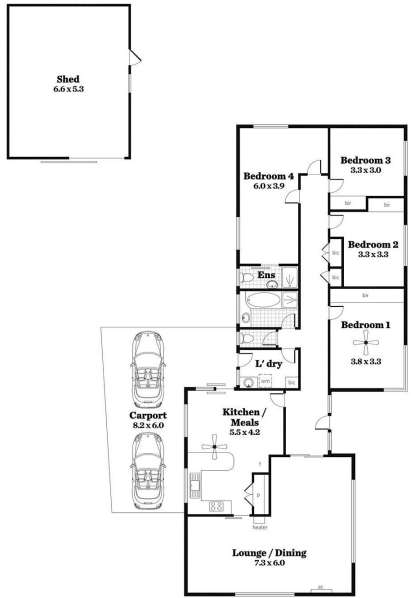
LJ Hooker Glenelg | Brighton (08) 8294 6000

76 Oaklands Road, SOMERTON PARK SA 5044
glenelgbrighton.ljhooker.com.au | rebecca@ljhglenelgbrighton.com.au



Disclaimer: All information contained therein is gathered from relevant third parties sources. We cannot guarantee or give any warranty about the information provided. Interested parties must rely solely on their own enquiries.

LJ Hooker Glenelg | Brighton
(08) 8294 6000



Area (Estimate only)	
Living	145.69 m ²
Carport	34.37 m ²
Total	180.06 m ²