

Smithfield, 6 Rose Street

Spacious Smithfield Home with Caravan Parking!

3 1 4

OPEN INSPECTION TIME: Click REQUEST INSPECTION button on website listing

Rent: \$495.00 per week

Bond: \$1,980.00

Available: 14/2/2025

Owners Intent to Sell: No intent advised

12 Month Lease

Pets Negotiable

Smoking outside only

Apply online at: www.2apply.com

For Lease

Please Call

View

ljhooker.com.au/66S6FDC

Contact

Wendy Page

wendy.page@ljhcs.com.au

You are welcome to complete an application form online prior to viewing.

Once you have signed up for an inspection time on the website listing, we will contact you via text message with a viewing time.



Disclaimer: All information contained therein is gathered from relevant third parties sources.

We cannot guarantee or give any warranty about the information provided. Interested parties must rely solely on their own enquiries.

**LJ Hooker Craigmore | Elizabeth |
Salisbury
(08) 8255 9555**

Do not call for a viewing time; one will be allocated to you once you have signed up via the website.

There will be no exceptions to this process.

Key Features:

- Modern Kitchen: Updated kitchen with sleek design and excellent functionality.
- Bedrooms: Bedroom 1 boasts a built-in robe for convenience.
- Comfort: Enjoy year-round comfort with both heating and cooling throughout the home.
- Caravan Parking: Ample space to park your caravan, boat, or trailer.
- Outdoor Oasis: Large backyard with an expansive pitched pergola, perfect for entertaining.
- Shade & Relaxation: Enjoy multiple shaded areas for outdoor relaxation.

Location:

- Convenience: Close to Munno Para Shopping City and Smithfield Train Station for easy access to amenities and the city.
- Lifestyle: Situated near the Smith Creek Walking Trail for leisurely strolls.
- Education: Conveniently located near Blakeview Primary and John Hartley School.

LJ Hooker Craigmore | Elizabeth | Salisbury: the number one Real Estate Agents / Sale Agents and Property Management in the Northern Suburbs of South Australia.

Specialists in: Andrews Farm, Angle Vale, Blakeview, Burton, Craigmore, Davoren Park, Elizabeth and surrounding, Gawler, Hillbank, Munno Para, One Tree Hill, Parafield, Para Hills, Paralowie, Salisbury, Smithfield.

Disclaimer:

We have in preparing this document used our best endeavours to ensure the information contained is true and accurate, but accept no responsibility and disclaim all liability in respect to any errors, omissions, inaccuracies or misstatements contained. Prospective tenants should make their own enquiries to verify the information contained in this document.

RLA155355

More About this Property

Property ID	66S6FDC
Property Type	House
Land Area	851 sqm

Wendy Page

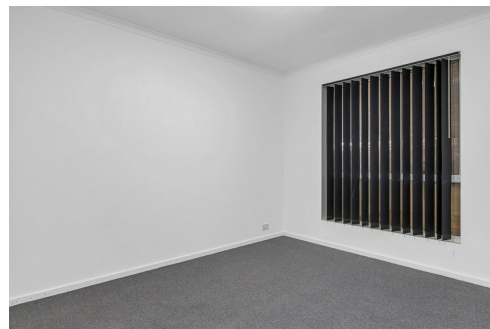
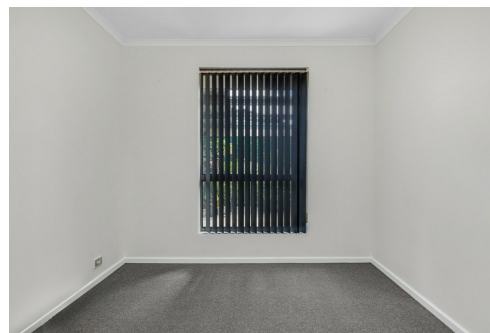
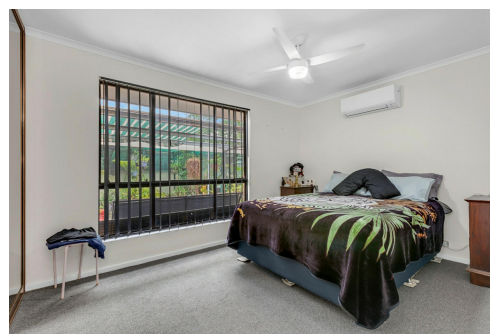
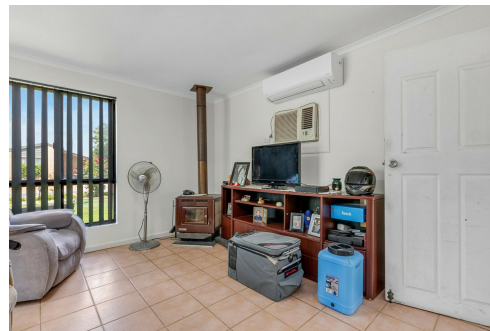
Property Investment Department Manager | wendy.page@ljhces.com.au

LJ Hooker Craigmore | Elizabeth | Salisbury (08) 8255 9555

Shop 17, Craigmore Village, Yorktown Road, CRAIGMORE SA 5114
craigmoreelizabeth.ljhooker.com.au | Office@ljhces.com.au



Disclaimer: All information contained therein is gathered from relevant third parties sources. We cannot guarantee or give any warranty about the information provided. Interested parties must rely solely on their own enquiries.



**LJ Hooker Craigmore | Elizabeth |
Salisbury
(08) 8255 9555**



6 Rose Street, Smithfield

DISCLAIMER: Floorplan and area calculation are approximate and for illustration purposes only.
Produced by **Property Portraits**

Interior	96m ²	341m²
Shed	21m ²	
Exterior	224m ²	
		TOTAL