



Smithfield Plains, 2/9 Bald Street

Huge 3 Bedroom Townhouse

3 2 1

Don't let the word townhouse fool you into thinking this is a small space!

This Beautiful property is the size of a two-story home featuring:

- Three bedrooms, all with built ins
- Two spacious living areas
- Two separate Balconies, coming off the main bedroom and the upstairs living area
- Plenty of cooling with Split systems to every bedroom and the downstairs living space
- Two large full-size bathrooms
- And understairs storage space

This property will not disappoint!

OPEN INSPECTION TIME: Click REQUEST INSPECTION button on website listing

For Lease

\$500 per week

View

By Appointment

Contact

Wendy Page

wendy.page@ljhces.com.au



Disclaimer: All information contained therein is gathered from relevant third parties sources.

We cannot guarantee or give any warranty about the information provided. Interested parties must rely solely on their own enquiries.

**LJ Hooker Craigmore | Elizabeth |
Salisbury
(08) 8255 9555**

Rent: \$500 per week

Bond: \$2,000

Available Date: 2/01/2025

Owners Intent to Sell: No intent advised

12 Month Lease

Pets Negotiable

Smoking outside only

Apply online at: www.2apply.com

You are welcome to complete an application form online prior to viewing.

Once you have signed up for an inspection time on the website listing, we will contact you via text message with a viewing time.

Do not call for a viewing time; one will be allocated to you once you have signed up via the website.

There will be no exceptions to this process.

Spacious town house with a grand entrance, featuring:

- 3 bedrooms
- Built-ins
- 2 bathrooms
- 2 Living
- 1 car garage
- Split system Air conditioners in all rooms and living areas
- 2 separate balconies front and rear
- Courtyard to rear
- Close to park, schools, shops and right next door to childcare centre

LJ Hooker Craigmore | Elizabeth | Salisbury: the number one Real Estate Agents / Sale Agents and Property Management in the Northern Suburbs of South Australia.

Specialists in: Andrews Farm, Angle Vale, Blakeview, Burton, Craigmore, Davoren Park, Elizabeth and surrounding, Gawler, Hillbank, Munno Para, One Tree Hill, Parafield, Para Hills, Paralowie, Salisbury, Smithfield.

Disclaimer:

We have in preparing this document used our best endeavours to ensure the information contained is true and accurate, but accept no responsibility and disclaim all liability in respect to any errors, omissions, inaccuracies or misstatements contained. Prospective tenants should make their own enquiries to verify the information contained in this document.

RLA155355



Disclaimer: All information contained therein is gathered from relevant third parties sources. We cannot guarantee or give any warranty about the information provided. Interested parties must rely solely on their own enquiries.

**LJ Hooker Craigmore | Elizabeth |
Salisbury
(08) 8255 9555**

More About this Property

Property ID	66E3FDC
Property Type	House

Wendy Page

Property Investment Department Manager | wendy.page@ljhces.com.au

LJ Hooker Craigmore | Elizabeth | Salisbury (08) 8255 9555

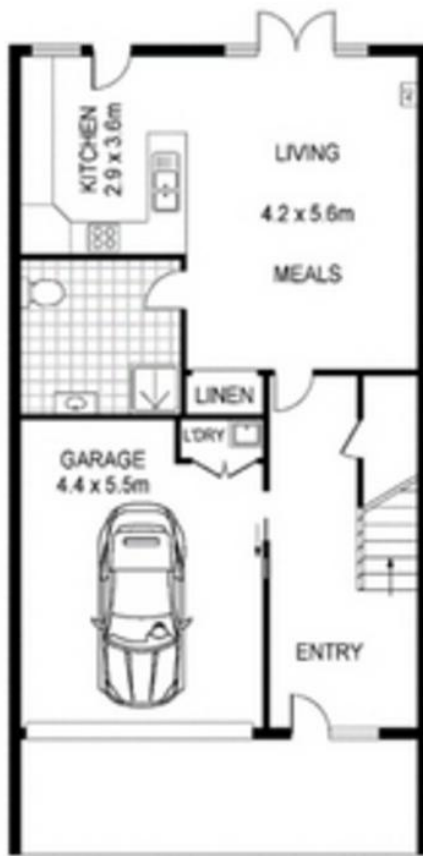
Shop 17, Craigmore Village, Yorktown Road, CRAIGMORE SA 5114
craigmoreelizabeth.ljhooker.com.au | Office@ljhces.com.au



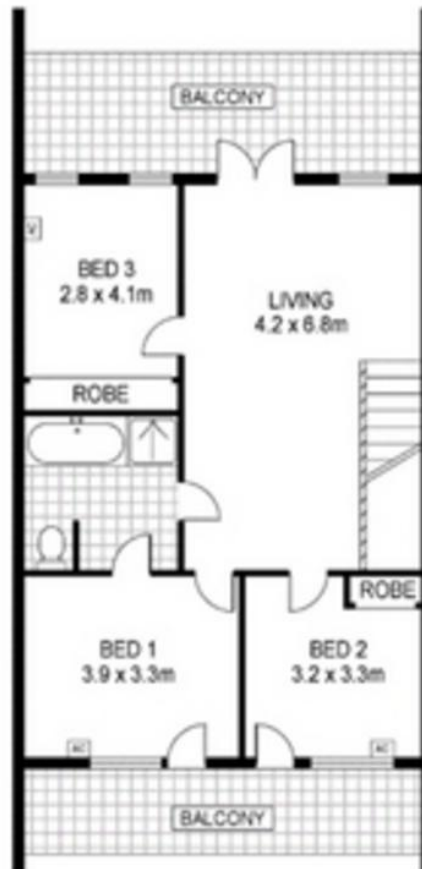
Disclaimer: All information contained therein is gathered from relevant third parties sources.
We cannot guarantee or give any warranty about the information provided. Interested parties must rely solely on their own enquiries.

**LJ Hooker Craigmore | Elizabeth |
Salisbury
(08) 8255 9555**

RWT



GROUND FLOOR



FIRST FLOOR



Scale in metres indicative only. Dimensions are approximate. All information contained herein is gathered from sources we believe to be reliable. However we cannot guarantee its accuracy and interested persons should rely on their own enquiries.

INT : 136m²

2/9 Bald Street, Smithfield Plains