



Smithfield Plains, 30 Gibson Street

Brand New 3 Bedroom Home

3  2  1 

OPEN INSPECTION TIME: Click REQUEST INSPECTION button on website listing

Rent: \$490.00 Per week

Bond: \$1960.00

Available Date: 28/05/2024

6/12 Month Lease

Pets Negotiable

Smoking outside only

Apply online at: www.2apply.com

You are welcome to complete an application form online prior to viewing.

Once you have signed up for an inspection time on the website listing, we will contact you



Disclaimer: All information contained therein is gathered from relevant third parties sources. We cannot guarantee or give any warranty about the information provided. Interested parties must rely solely on their own enquiries.

For Lease
Please Call

View
ljhooker.com.au/65JPFDC

**LJ Hooker Craigmore | Elizabeth |
Salisbury
(08) 8255 9555**

via text message with a viewing time.

Do not call for a viewing time; one will be allocated to you once you have signed up via the website.

There will be no exceptions to this process.

Brand new build, located with in walking distance to local shops and public transport.

Property Features:

- Master Bedroom with walk in robe and ensuite
- Built in robes to the other 2 bedrooms.
- Open Plan living to the rear of the home.
- Kitchen with plenty of storage
- Low Maintenance gardens
- Single garage with home access
- Fully fenced rear yards

LJ Hooker Craigmore | Elizabeth | Salisbury: the number one Real Estate Agents / Sale Agents and Property Management in the Northern Suburbs of South Australia.
Specialists in: Andrews Farm, Angle Vale, Blakeview, Burton, Craigmore, Davoren Park, Elizabeth and surrounding, Gawler, Hillbank, Munno Para, One Tree Hill, Parafield, Para Hills, Paralowie, Salisbury, Smithfield.

Disclaimer:

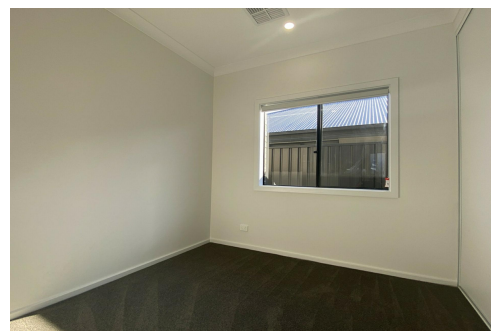
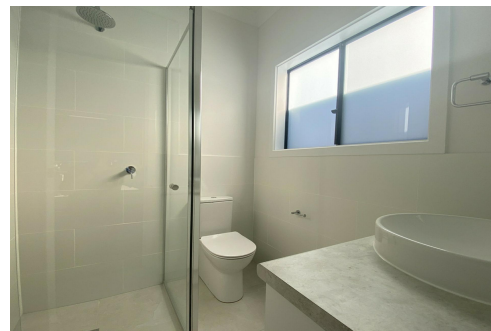
We have in preparing this document used our best endeavours to ensure the information contained is true and accurate, but accept no responsibility and disclaim all liability in respect to any errors, omissions, inaccuracies or misstatements contained. Prospective tenants should make their own enquiries to verify the information contained in this document.

RLA155355

More About this Property

Property ID	65JPFDC
Property Type	House
Land Area	290 sqm

LJ Hooker Craigmore | Elizabeth | Salisbury (08) 8255 9555
Shop 17, Craigmore Village, Yorktown Road, CRAIGMORE SA 5114
craigmoreelizabeth.ljhooker.com.au | Office@ljhces.com.au



Disclaimer: All information contained therein is gathered from relevant third parties sources.
We cannot guarantee or give any warranty about the information provided. Interested parties must rely solely on their own enquiries.

**LJ Hooker Craigmore | Elizabeth |
Salisbury
(08) 8255 9555**

FOR CONSTRUCTION

NOTE
ALL SMOKE DETECTORS MUST BE INTERCONNECTED & HARDWIRED
IN ACCORDANCE WITH AS 3786

NOTE
ALL WINDOW REVEALS TO BE TIMBER UNLESS NOTED OTHERWISE
BY WINDOW MANUFACTURER

ALL OPENINGS HARD UP TO WALL FRAME OR CLADDING TO BE
REDUCED IN WIDTH TO SUIT WINDOW MANUFACTURER REVEALS/
TOLERANCE AS REQUIRED

