



Shiel Hill, 1/199 Somerville

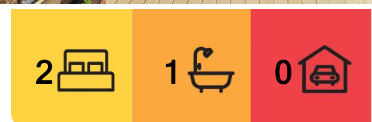
A new townhouse ready for you!

TO VIEW: Please register in Trademe for the set viewing time and day

Situated in a desirable Dunedin location this brand new two bedroom dwelling is perfect for those who value convenience and low-maintenance living.

Built across two intelligently designed levels, the split-level living areas on the ground floor opens onto the sun-drenched deck, while upstairs you'll find both bedrooms and the well appointed bathroom. The kitchen is spacious in design and includes a fridge/freezer and washing machine.

If you are after an easy care home, located in a desirable suburb with all the conveniences of a lock and leave to allow you time for coffees, adventures or weekends away then here it is! The unit is situated among other quality units who are occupied by quiet professional tenants.



For Lease
Please Call

View
l.jhooker.co.nz/3NA3GDS

Contact
Nathan Dickson
027 214 7265
nathan@ljhdunedin.co.nz



Disclaimer: All information contained therein is gathered from relevant third parties sources. We cannot guarantee or give any warranty about the information provided. Interested parties must rely solely on their own enquiries.

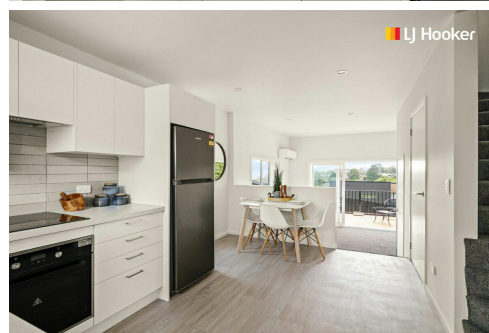
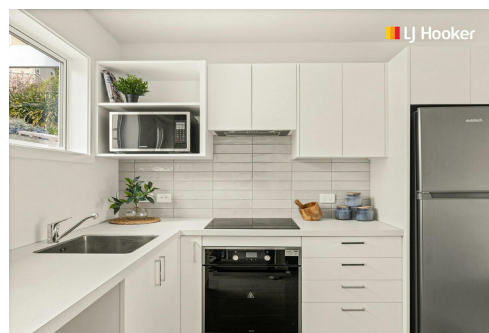
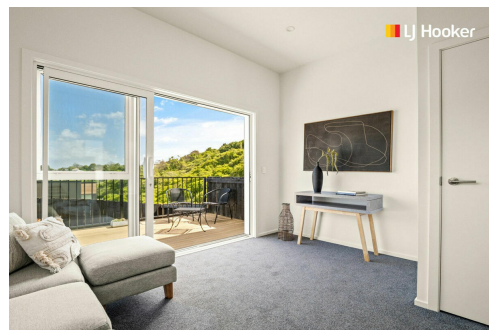
LJ Hooker Dunedin
(03) 470 1370
Wayne Graham Realty Ltd

More About this Property

Property ID	3NA3GDS
Property Type	House
Licensed Real Estate Agents (REAA2008)	

Nathan Dickson 027 214 7265
Leasing Agent | nathan@ljhdunedin.co.nz

LJ Hooker Dunedin (03) 470 1370
Wayne Graham Realty Ltd
63 Musselburgh Rise, DUNEDIN 9013
dunedin.ljhooker.co.nz | dunedin@ljhdunedin.co.nz



Disclaimer: All information contained therein is gathered from relevant third parties sources.
We cannot guarantee or give any warranty about the information provided. Interested parties must rely solely on their own enquiries.

LJ Hooker Dunedin
(03) 470 1370
Wayne Graham Realty Ltd