



Shelley, 39 Modillion Avenue North

LUXURY IS YOURS

Located in the Rossmoyne High School zone is this grand Family home. Stroll to the Swan River to watch the fireworks or to enjoy a paddle, This truly is the place to be.

Based on a huge yard with enclosed underground swimming pool. A massive double garage, plus room for a caravan or boat to be securely parked. Solar panels to save you money to support your new lifestyle.

Double doors on entry welcome you to this lovely 4 bedroom 2 bathroom property.

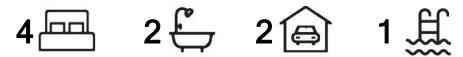
The white tiled and bamboo flooring, downlights throughout add to the spaciousness of this property. The kitchen is light and bright with plenty of cupboard space and bench space, gas cooking and a dishwasher as a bonus.

Multiple living spaces to give every generation a bit of space.

All bedrooms have air-conditioners and ceiling fans. with built in robes.



Disclaimer: All information contained therein is gathered from relevant third parties sources. We cannot guarantee or give any warranty about the information provided. Interested parties must rely solely on their own enquiries.



For Lease

Please Call

View

ljhooker.com.au/5DP7FFB

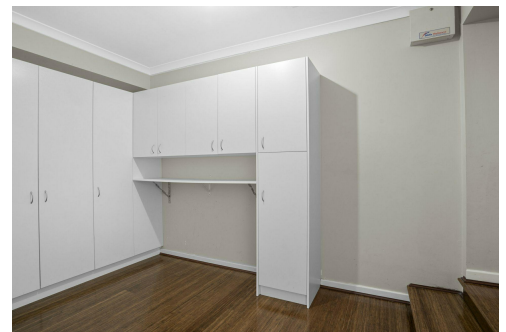
**LJ Hooker Victoria Park | Belmont
(WA)**

(08) 9473 7777

The outdoor area is majestic with the semi enclosed light patio area, a beautiful grass area and a pool for the best gatherings will make you the best entertainers ever.

Key Features:

- * Air-conditioning and ceiling fans
 - * Brilliant outdoor entertaining space
 - * Huge double garage with Shoppers entry
 - * Space for boat or caravan to be securely parked
 - * Swimming Pool
 - * Dishwasher
 - * Gas cooking and heating
 - * Canning River lifestyle
 - * Walk to Shelley Primary school
 - * Bamboo timber flooring to open plan living area
 - * Rossmoyne Senior High School Zone
-
- Pets considered
 - Unfurnished
 - 6 or 12 months initial lease term



More About this Property

Property ID	5DP7FFB
Property Type	House
Including	Air Conditioning Pool Dishwasher Remote Garage

LJ Hooker Victoria Park | Belmont (WA) (08) 9473 7777

288 Albany Highway, VICTORIA PARK WA 6100

victoriapark-belmontwa.ljhooker.com.au | reception@ljhvicpark.com.au



LJ Hooker Victoria Park | Belmont (WA) (08) 9473 7777

Disclaimer: All information contained therein is gathered from relevant third parties sources. We cannot guarantee or give any warranty about the information provided. Interested parties must rely solely on their own enquiries.