

Shailer Park, 19 Dane Court

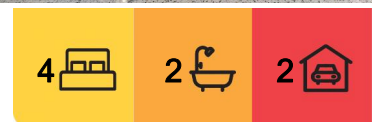
Ultra-Modern Family Home with Space, Style in Shailer Park!

Welcome to this beautifully presented home, perfectly positioned in an elevated and highly sought-after pocket of Shailer Park. Offering generous space, modern finishes, and practical design, this home is ideal for families or professionals seeking both comfort and style.

Downstairs has been transformed with ultra-modern finishes, featuring a huge open-plan kitchen, living, and dining area that flows seamlessly to the covered outdoor entertaining space - ideal for relaxed gatherings and weekend BBQs.

Key Features Include:

- Four spacious bedrooms, including a generous master suite with walk-in robe and ensuite



For Lease
\$1,000 per week

View
By Appointment

LJ Hooker Shailer Park
(07) 3102 0829

Disclaimer: All information contained therein is gathered from relevant third parties sources. We cannot guarantee or give any warranty about the information provided. Interested parties must rely solely on their own enquiries.

- Multiple living areas, offering flexible family living and space to spread out
- Designer kitchen with ample storage, dishwasher, and modern appliances
- Reverse-cycle air-conditioning to the master bedroom, dining, and family rooms
- Cozy fireplace in the main living area, perfect for cooler evenings
- Stylish main bathroom with separate bath and shower
- Convenient downstairs powder room with a third toilet
- Carpeted upstairs, with easy-care tiled floors throughout the lower level
- Remote-controlled double garage with secure undercover parking
- Beautifully landscaped gardens on an elevated block

Located close to schools, shops, transport, and local parklands, this home offers the perfect balance of convenience and lifestyle.

Don't miss the opportunity to secure this exceptional home - space, style, and comfort await!

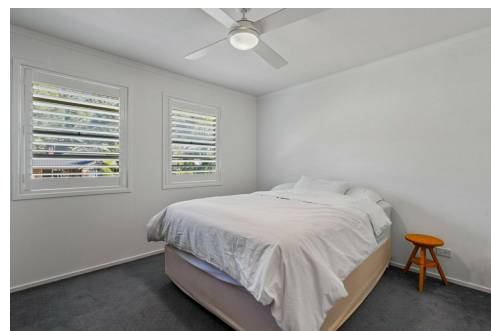
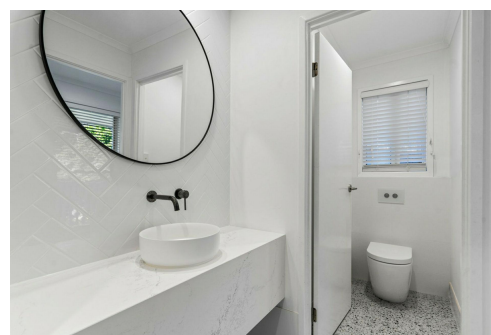
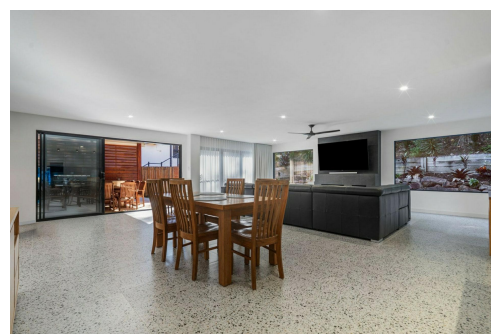
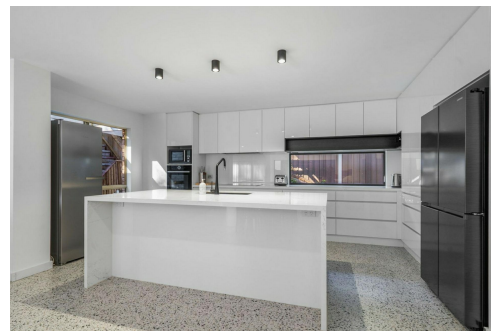
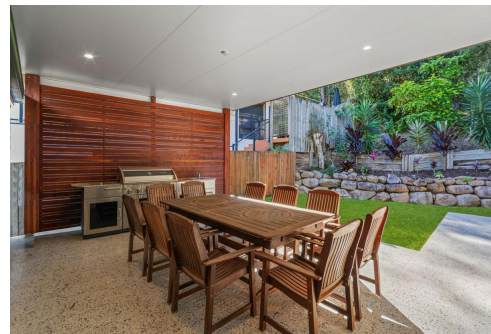
Disclaimer: We have used our best endeavours to ensure the information contained in this listing is accurate. However, no responsibility will be accepted for any errors, omissions, or inaccuracies. Prospective tenants should conduct their own enquiries.

Please Note: We use LJ Hooker Assist for utility connections. This is a free service, and while you are not obligated to use them, they will contact you regarding utility connections prior to your lease commencing. Should you not wish to use this service, simply advise them when they get in touch.

More About this Property

Property ID	66QHVG
Property Type	House
Land Area	942 sqm

LJ Hooker Shailer Park (07) 3102 0829
 2/3 Mandew Street, SHAILER PARK QLD 4128
shailerpark.ljhooker.com.au | shailerpark@ljhooker.com.au

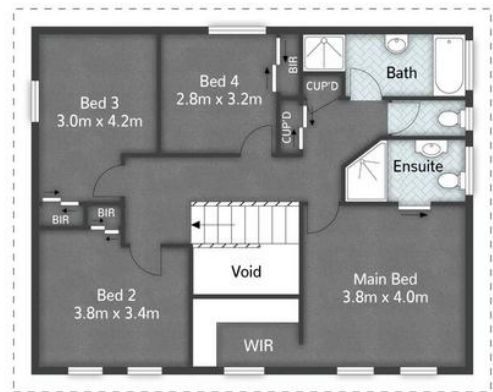


LJ Hooker Shailer Park
(07) 3102 0829

Disclaimer: All information contained therein is gathered from relevant third parties sources. We cannot guarantee or give any warranty about the information provided. Interested parties must rely solely on their own enquiries.



GROUND FLOOR



FIRST FLOOR



19-21 Dane Court SHAILER PARK

4 | 2 | 2 | 313m²



All dimensions are approximate; they are subject to errors and inaccuracies and no liability will be accepted. Plans are shown for marketing purposes only.



LJ Hooker Shailer Park
(07) 3102 0829

Disclaimer: All information contained therein is gathered from relevant third parties sources. We cannot guarantee or give any warranty about the information provided. Interested parties must rely solely on their own enquiries.