



Shailer Park, 13 Lyndale Street

Well Situated Low-set Family Home



For Lease
\$520 per week

View
By Appointment

Presented to the market is this renovated four bedroom home.

Features include:

- Four bedrooms (two with built in robes but all able to fit a double bed)
- Large tiled, air-conditioned lounge room
- New kitchen with dishwasher
- Single lock up garage plus a single carport
- Large fenced yard
- Internal Laundry
- Close to JPC and other excellent schools

Positioned in the heart of Shailer Park this property is only a few minutes drive from the M1, and is centrally located between Brisbane and the Gold Coast, within 30 minutes of each. Enjoy the convenience of shopping in one of Queensland's biggest shopping



LJ Hooker Shailer Park
(07) 3102 0829

Disclaimer: All information contained therein is gathered from relevant third parties sources. We cannot guarantee or give any warranty about the information provided. Interested parties must rely solely on their own enquiries.

centres, just down the road, which also has a great entertainment precinct and bus station. School runs will be a breeze as this property is also only a few minutes drive to John Paul College, Chisholm College, Carbrook State School, St Matthews, Kimberley College and Calvary Christian College.

If you're looking for a rental property in excellent condition, with a great location and a spacious, welcoming feel, this is the place for you!

To book an inspection, simply click on "Email Agent" or the "Book Inspection" button to arrange. By registering, you will be instantly informed of any updates changes or cancellations for your appointment. Alternatively you can contact us on (07) 3102 0829 or via email at shailerpark@ljhooker.com.au.

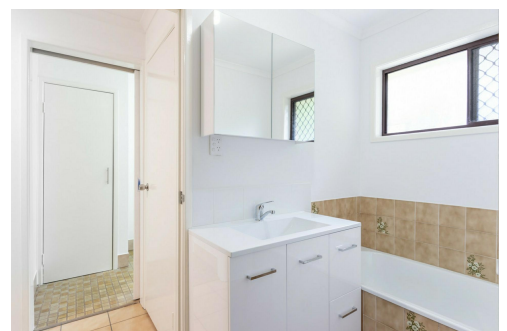
Disclaimer: We have in preparing this disclosure used our best endeavours to ensure that the information contained herein is true and accurate. No responsibility will be accepted for any and all liability in respect of errors, omissions, Photos, inaccuracies or misstatements. Tenants are responsible to carry out their own research.

Please note, we use LJ Hooker Assist for utility connections. This is a free service and you are not obliged to use them however they will contact you regarding your utility connections prior to the lease commencing. Should you not wish to use this service, just let them know when they contact you*

More About this Property

Property ID	612HVG
Property Type	House
Land Area	1022 sqm

LJ Hooker Shailer Park (07) 3102 0829
2/3 Mandew Street, SHAILER PARK QLD 4128
shailerpark.ljhooker.com.au | shailerpark@ljhooker.com.au



Disclaimer: All information contained therein is gathered from relevant third parties sources. We cannot guarantee or give any warranty about the information provided. Interested parties must rely solely on their own enquiries.

LJ Hooker Shailer Park
(07) 3102 0829