



Leased



109 Boxer Avenue, Shailer Park

## Versatile Dual Living Home with Massive Shed & Resort-Style Pool

Private Family Retreat with Pool Servicing & Garden Maintenance Included

Welcome to your own private retreat - a peaceful family home set on a sprawling 3,146m<sup>2</sup> block backing directly onto the beautiful Cornubia Forest Reserve. Offering space, privacy and versatile living, this impressive property combines lifestyle and practicality in one exceptional package. With both regular garden maintenance and pool servicing included, tenants can enjoy the benefits of acreage-style living without the upkeep, making this a rare low-maintenance lifestyle opportunity.

Designed for relaxed family living, the upper level features a light-filled lounge room flowing through to the kitchen, meals area and spacious family room complete with a wood heater for the cooler months. Wrap-around verandahs on three sides capture breezes, leafy outlooks and tranquil views, creating the perfect place to unwind or entertain.

5 🚗 3 🚗 8 🚗

### FOR RENT

Please Call

### AGENTS

Sarah Ross  
0423731173  
shailerpark@ljhooker.com.au

### AGENCY

LJ Hooker Shailer Park  
(07) 3102 0829

All information contained therein is gathered from relevant third parties sources. We cannot guarantee or give any warranty about the information provided. Interested parties must rely solely on their own enquiries.



Property features include:

- 5 spacious bedrooms plus 3 bathrooms
  - Flexible downstairs retreat with separate access & kitchenette - ideal for extended family, teenagers, home business, or guest accommodation
  - Multiple separate living areas
  - Timber flooring through kitchen, meals and family areas
  - Wrap-around verandahs on three sides of the home
  - Solar-heated in-ground pool with private gazebo
  - Garden maintenance & pool servicing included
  - Huge powered 15m x 6m shed with side access
  - Massive under-house storage area
  - Basketball hoop, trampoline, veggie gardens and room for chickens
  - 3 rainwater tanks totalling 25,600 litres
  - Crimsafe security screens to doors and windows
  - Private access to Cornubia Forest walking and bike trails
- \*Please note: roof construction works are scheduled to take place during the tenancy period. These works may involve some temporary inconvenience including noise and occasional power outages.\*\*

Positioned in a quiet, leafy setting while still being only minutes to schools, the Hyperdome, Brisbane CBD and the Gold Coast, this property offers the lifestyle opportunity families rarely find in the rental market.

## MORE DETAILS

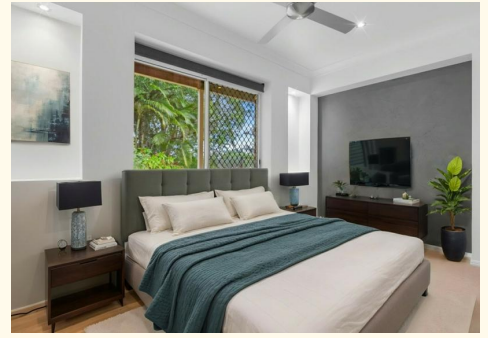
Property ID                      6FEHVG  
Property Type                  House

### Sarah Ross 0423731173

Senior Property Manager / Office Manager |  
shailerpark@ljhooker.com.au

### LJ Hooker Shailer Park (07) 3102 0829

2/3 Mandew Street, SHAILER PARK QLD 4128  
shailerpark.ljhooker.com.au | shailerpark@ljhooker.com.au





## 109 Boxer Avenue SHAILER PARK

239m<sup>2</sup>
 4 Bed
 3 Bath
 2 Car

**DISCLAIMER** | Plans are shown for marketing purposes only. All dimensions are approximate; they are subject to errors and inaccuracies and no liability will be accepted.