

Salisbury, 34C Evan Avenue

So much for so little!

TO APPLY FOR THIS PROPERTY: <https://tenantoptions.com.au/>

** Only applicants who have inspected the property will be considered **

LJ Hooker Property Specialists are proud to present this stunning townhouse!
Located near local schools, shops and public transport. This home wont last long!

Features Include:

- * 3 bedrooms, bedroom 2 with built in robe
- * Master bedroom with ensuite and walk-in robe
- * Second bathroom located on the top level
- * Ceiling fans to all bedrooms
- * Roller shutters to all bedrooms
- * Open plan living, dining and kitchen



Disclaimer: All information contained therein is gathered from relevant third parties sources. We cannot guarantee or give any warranty about the information provided. Interested parties must rely solely on their own enquiries.



For Lease

Please Call

View

ljhooker.com.au/29NNGJU

Contact

Rachel Prior

rachelp@ljhpropertymanagement.com.au

LJ Hooker Greenwith | Golden Grove | Mawson Lakes | Modbury
(08) 8289 6660

- * Kitchen with 5 burner gas cooktop
- * Reverse cycle heating and cooling for all year-round comfort
- * European laundry
- * Gabled pergola outdoor entertaining overlooking the back yard
- * Small tool shed
- * 13 x 440kw solar panels and 5kw inverter (approx.)

** Tenant is liable for all water usage and supply **

** Small outside pet may be considered **

Please contact us during office hours on 8289 6660 (Monday-Friday 9am-5.30pm) if you have any queries regarding the application process. If your queries relate to an open inspection time, please be advised that all open times are updated every Friday by close of business. If you are unable to attend the open inspection or there are no open times scheduled, please send your enquiry through this website.

RLA 208516

More About this Property

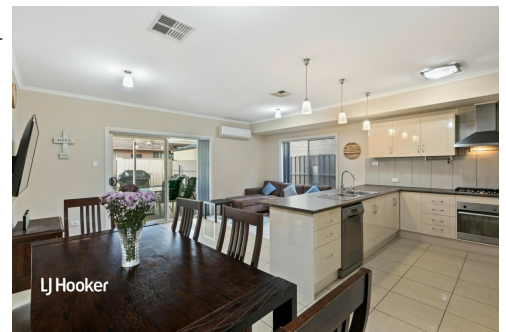
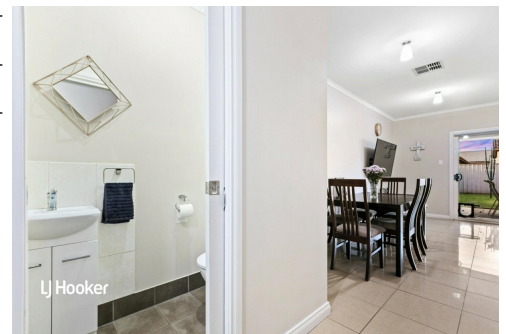
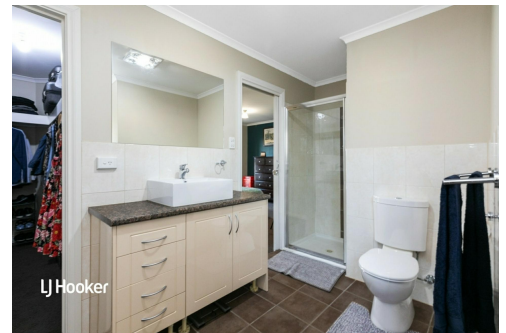
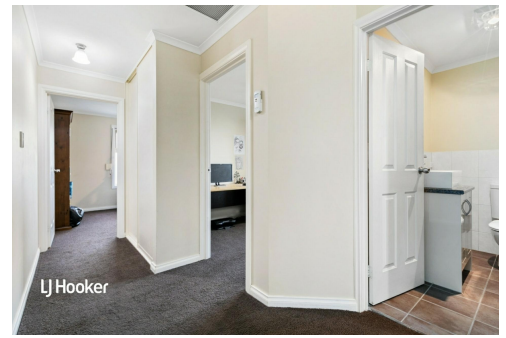
Property ID	29NNGJU
Property Type	House
Land Area	230 sqm
Including	Air Conditioning Dishwasher Outdoor Entertaining Built-in-Robes Secure Parking Solar Panels Remote Garage

Rachel Prior

Property Investment Specialist |
rachel.p@ljhpropertymanagement.com.au

LJ Hooker Greenwith | Golden Grove | Mawson Lakes | Modbury (08) 8289 6660

North East, Shop 2, 1007 North East Road, RIDGEHAVEN SA 5097
greenwithgoldengrove.ljhooker.com.au | info@ljhsupport.com.au



Disclaimer: All information contained therein is gathered from relevant third parties sources. We cannot guarantee or give any warranty about the information provided. Interested parties must rely solely on their own enquiries.

LJ Hooker Greenwith | Golden Grove | Mawson Lakes | Modbury (08) 8289 6660