



21 Natalie Avenue, Salisbury

Comfort, Space and Everyday Convenience

Ideally positioned in Salisbury, the property offers easy access to everyday essentials, with shopping at Parabanks Shopping Centre and Hollywood Plaza, nearby schools, local parks, cafes, and convenient public transport options all close at hand.

What you'll love;

- Newly painted
- New floorboards
- Open plan living, dining and kitchen
- Kitchen with electric cooking and pantry
- Front lounge room or 4th bedroom
- 3 x good sized bedrooms
- Main bathroom with bath, shower, vanity and separate toilet
- " Ducted reverse cycle air conditioning
- " Rear verandah's —ideal for entertaining
- Internal laundry
- Garage/shed with roller door
- Single carport
- Gas hot water

Living at 21 Natalie Avenue in Salisbury offers a highly convenient and well-connected lifestyle, with shopping at Parabanks Shopping

3 1 2

FOR RENT

Please Call

AGENTS

Jackson Dodwell

0434 079 463

jackson.dodwell@ljhadelaidemetro.com.au

Kirsty Clark

0422 005 721

kirsty.clark@ljhadelaidemetro.com.au

AGENCY

LJ Hooker St Peters

(08) 8362 8008

Centre and Hollywood Plaza just minutes away. Families benefit from nearby schooling including Salisbury Primary School, Salisbury High School and Thomas More College, while local parks such as Carisbrooke Park and Jenkins Reserve provide great outdoor space for recreation. With public transport, cafés, and everyday amenities all close by, it's a location that delivers comfort, convenience, and strong family appeal.

Water charges: Water usage and supply charges apply

Furniture: Unfurnished

NOTE ABOUT THE OPEN INSPECTIONS: Interested persons **MUST** register their details to attend any of the scheduled viewing dates and times allocated. The agent will not attend the listed viewing date and time if you do not register and confirm your attendance. It is for this reason we highly recommend you register to attend to ensure the agent's attendance and to avoid disappointment.

Disclaimer: All information provided has been obtained from sources we believe to be accurate, however, we cannot guarantee the information is accurate and we accept no liability for any errors or omissions. We encourage all interested parties to make their own enquiries, particularly regarding NBN/internet availability at the property.

MORE DETAILS

Property ID	2E9RFDZ
Property Type	House
Including	Toilets (1)

Jackson Dodwell 0434 079 463

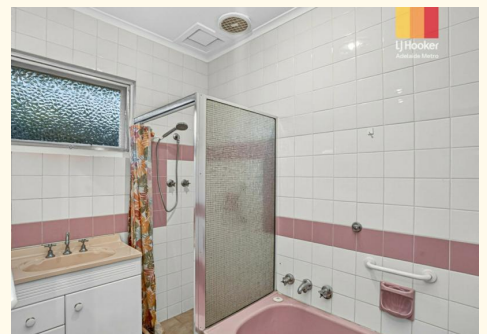
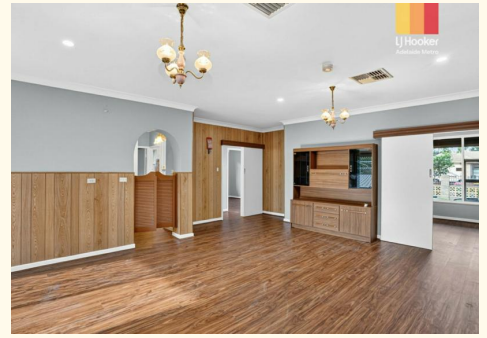
Residential Property Manager |
jackson.dodwell@ljhadelaidemetro.com.au

Kirsty Clark 0422 005 721

Business Development Manager |
kirsty.clark@ljhadelaidemetro.com.au

LJ Hooker St Peters (08) 8362 8008

2a Portrush Road, PAYNEHAM SA 5070
stpeters.ljhooker.com.au | stpeters@ljhadelaidemetro.com.au





21 Natalie Avenue, Salisbury, SA 5108

Disclaimer: The information & figures obtained within this document has been compiled from information provided by vendor & sources that we believe are reliable. No warranty is given to their accuracy & all figures are subject to change without notice.