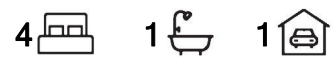


Salisbury East, 7 Robin Street

4 Bedroom Family Comfort



TO REGISTER AND INSPECT THIS PROPERTY VISIT: <https://tenantoptions.com.au/>

** Only applicants who have inspected the property will be considered **

Discover your dream home in this spacious 4-bedroom house located in the perfect location. This beautifully designed home offers ample space for your family to grow and create lasting memories. With a convenient layout, this property is ideal for comfortable living. Don't miss out on the opportunity to rent a home in this sought-after neighbourhood.

Features You'll Love:

- Three bedrooms under the main roof, master with built-in robe, ceiling fan, and roller shutter
- Bedrooms two and three with roller shutters
- Separate fourth rumpus/bedroom with its own toilet
- Evaporative cooling and ducted gas heating for year-round comfort



Disclaimer: All information contained therein is gathered from relevant third parties sources. We cannot guarantee or give any warranty about the information provided. Interested parties must rely solely on their own enquiries.

For Lease
Please Call

View
ljhooker.com.au/2AM1GJU

Contact
Chloe Durdin
chloed@ljhpropertymanagement.com.au

**LJ Hooker Greenwith | Golden Grove
| Mawson Lakes | Modbury
(08) 8289 6660**

- Polished floors throughout
- Gas hot water and stovetop
- Abundant linen storage
- Solar panels to save on electricity bills
- Garden shed/workshop

Salisbury East is a thriving suburb renowned for its family-friendly atmosphere, excellent schools, and convenient amenities. Enjoy easy access to shopping centres, parks, and public transport, making daily life a breeze.

Please contact us during office hours on 8289 6660 (Monday-Friday 9am-5.30pm) if you have any queries regarding the application process. If your queries relate to an open inspection time, please be advised that all open times are updated every Friday by close of business. If you are unable to attend the open inspection or there are no open times scheduled, please send your enquiry through this website.

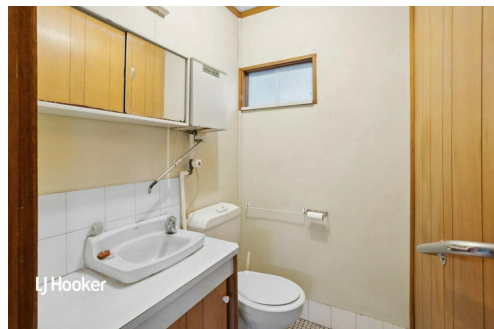
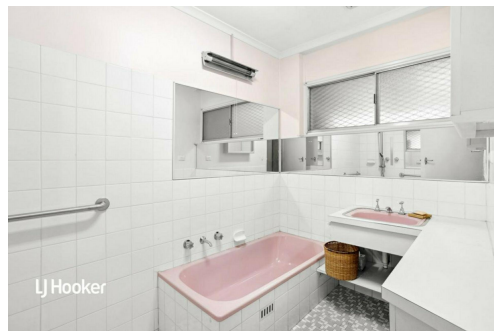
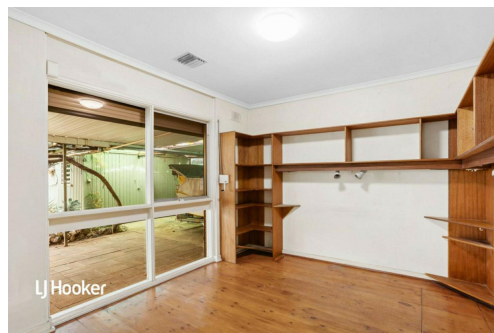
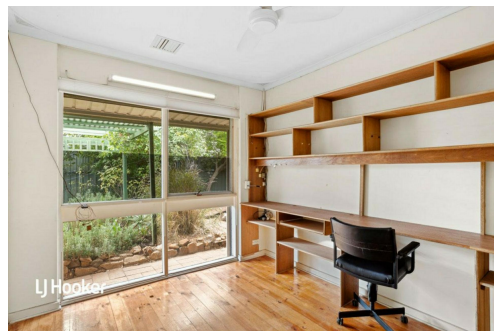
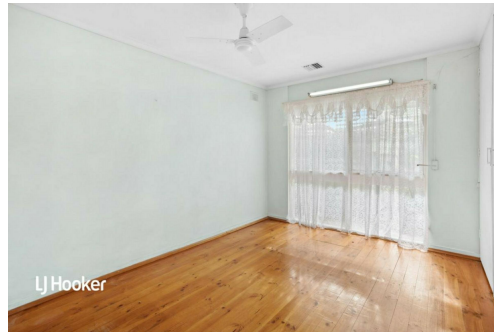
RLA 208516

More About this Property

Property ID	2AM1GJU
Property Type	House
Land Area	670 sqm
Including	Toilets (2)

Chloe Durdin
Property Investment Manager | chloed@ljhpropertymanagement.com.au

LJ Hooker Greenwith | Golden Grove | Mawson Lakes | Modbury (08) 8289 6660
North East, Shop 2, 1007 North East Road, RIDGEHAVEN SA 5097
greenwithgoldengrove.ljhooker.com.au | info@ljhsupport.com.au



Disclaimer: All information contained therein is gathered from relevant third parties sources. We cannot guarantee or give any warranty about the information provided. Interested parties must rely solely on their own enquiries.

**LJ Hooker Greenwith | Golden Grove
| Mawson Lakes | Modbury
(08) 8289 6660**



Produced by The Fotobase Group