

Salisbury East, 38 Jacaranda Drive

Refreshed and ready for you!

3 1 1

TO REGISTER AND INSPECT THIS PROPERTY VISIT: <https://tenantoptions.com.au/>

** Only applicants who have inspected the property will be considered **

Welcome to this beautifully refreshed home, where the spacious front lounge room invites you to relax while enjoying views of outdoors. With plenty of natural lighting streaming through, filling the room with a relaxed atmosphere. Equipped with a split system, this space promises year-round comfort. Throughout the home, elegant timber floors add character, complemented by brand-new carpet in the lounge and bedrooms. Freshly painted throughout this home creates a modern and move-in-ready feel.

Offering three spacious bedrooms, each thoughtfully designed with ceiling fans and built-in robes for ample storage. The master bedroom and bedroom three are equipped with split systems, providing personalized comfort in every season.

For Lease

\$550 p/week

View

By Appointment

Contact

Chloe Durdin

chloed@ljhpropertymanagement.com.au



Disclaimer: All information contained therein is gathered from relevant third parties sources.

We cannot guarantee or give any warranty about the information provided. Interested parties must rely solely on their own enquiries.

**LJ Hooker Greenwith | Golden Grove
| Mawson Lakes | Modbury
(08) 8289 6660**

Features you'll love

- * Three spacious bedrooms
- * Master bedroom with split system, ceiling fan and built-in robe
- * Bedroom two with ceiling fan and built-in robe
- * Bedroom three with split system, ceiling fan and built-in robe
- * Updated kitchen with ample storage
- * Outdoor entertaining
- * Drive through access to shed
- * Rain water tank

You'll be within walking distance and easy reach to shops, parks and public transport. Discover the ultimate blend of convenience and natural beauty in Salisbury East, where this inviting home awaits with a park and reserve just moments away.

Please contact us during office hours on 8289 6660 (Monday-Friday 9am-5.30pm) if you have any queries regarding the application process. If your queries relate to an open inspection time, please be advised that all open times are updated every Friday by close of business. If you are unable to attend the open inspection or there are no open times scheduled, please send your enquiry through this website.

RLA 208516

More About this Property

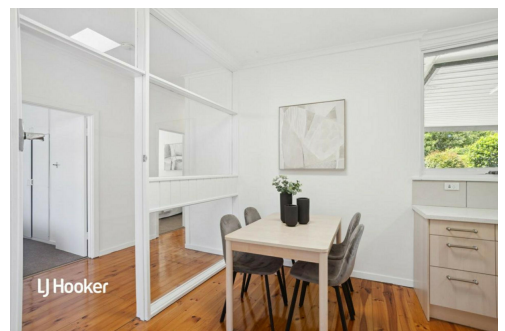
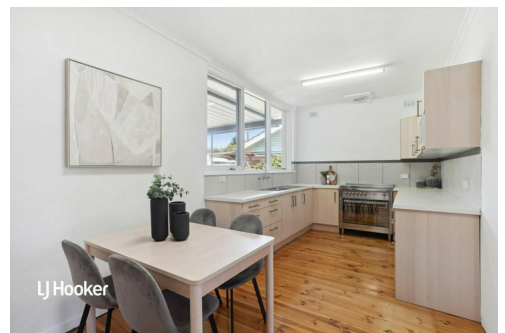
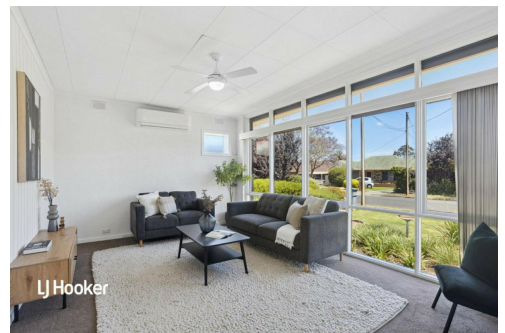
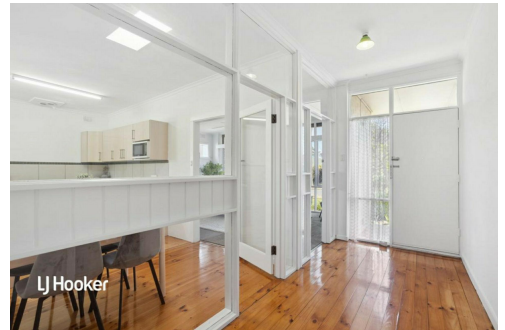
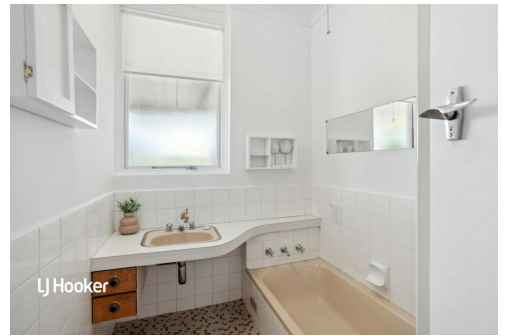
Property ID	2B8PGJU
Property Type	House
Land Area	590 sqm

Chloe Durdin

Property Investment Manager | chloed@ljhpropertymanagement.com.au

LJ Hooker Greenwith | Golden Grove | Mawson Lakes | Modbury (08) 8289 6660

North East, Shop 2, 1007 North East Road, RIDGEHAVEN SA 5097
greenwithgoldengrove.ljhooker.com.au | info@ljhsupport.com.au



Disclaimer: All information contained therein is gathered from relevant third parties sources. We cannot guarantee or give any warranty about the information provided. Interested parties must rely solely on their own enquiries.

**LJ Hooker Greenwith | Golden Grove
| Mawson Lakes | Modbury
(08) 8289 6660**