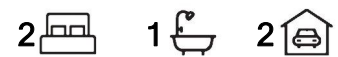


## Rostrevor, 1/27 Forest Avenue

### Well Presented Homette



This double brick home is positioned in an ideal location, close to shops and public transport with the creek line to Morialta Falls being only a short walk away.

Features include:

- \*Secure, fully enclosed front yard
- \*Timber floorboards
- \*Combined lounge and dining area with ceiling fan
- \*Kitchen with ample cupboard and benchtop space
- \*Both bedrooms are of a good size with built in robes and ceiling fans
- \*Bathroom with bath, shower, vanity and toilet
- \*Internal laundry
- \*Split system air conditioning
- \*Rear courtyard with paved BBQ area and shade sail
- \*Established lawn and gardens

**For Lease**  
Please Call

**View**  
[ljhooker.com.au/2CKGFDZ](http://ljhooker.com.au/2CKGFDZ)

**Contact**  
**Jessica Dimasi**  
0413 041 287  
[jessica.dimasi@ljhadelaidemetro.com.au](mailto:jessica.dimasi@ljhadelaidemetro.com.au)



**Disclaimer:** All information contained therein is gathered from relevant third parties sources. We cannot guarantee or give any warranty about the information provided. Interested parties must rely solely on their own enquiries.

**LJ Hooker St Peters**  
**(08) 8362 8008**



\*Large garage

Vibrant pocket of Rostrevor walking distance to your local cafe and tasty takeaway options. Great access to public transport options ready to zip you straight into the city. Close to public and private schools, popular parks and playgrounds, as well as the lovely Fourth Creek winding its way to Morialta Conservation Park for scenic weekend walks. Moments to Newton Central & Target, Firlie Plaza & Kmart, as well as the iconic Parade Norwood for an unrivalled selection of shopping hubs, cafes and restaurants. Under 15-minutes to the CBD.

Water charges: Water usage and supply charges apply

Furniture: Unfurnished

**NOTE ABOUT THE OPEN INSPECTIONS:** Interested persons MUST register their details to attend any of the scheduled viewing dates and times allocated. The agent will not attend the listed viewing date and time if you do not register and confirm your attendance. It is for this reason we highly recommend you register to attend to ensure the agent's attendance and to avoid disappointment.

**Disclaimer:** All information provided has been obtained from sources we believe to be accurate, however, we cannot guarantee the information is accurate and we accept no liability for any errors or omissions. We encourage all interested parties to make their own enquiries, particularly regarding NBN/internet availability at the property.

## More About this Property

<b>Property ID</b>	2CKGFDZ
<b>Property Type</b>	Unit

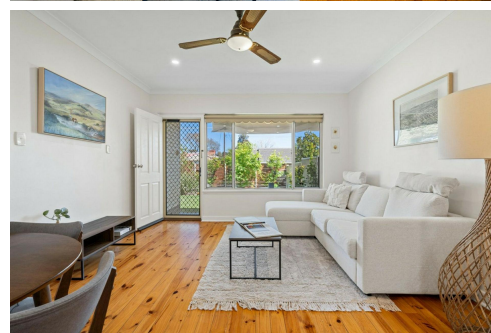
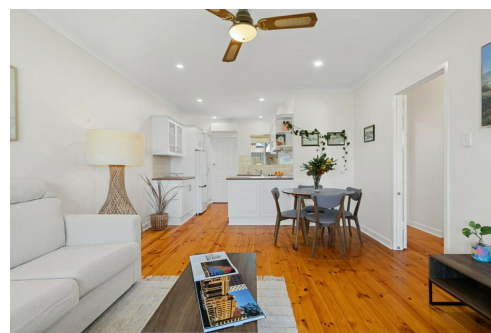
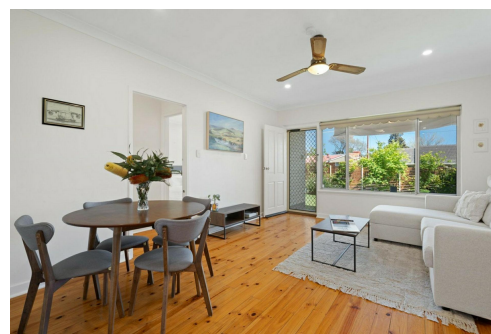
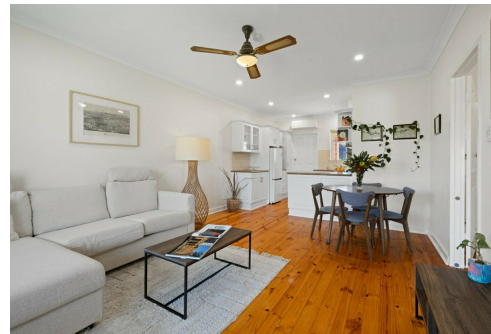
**Jessica Dimasi 0413 041 287**

Property Investment Manager | [jessica.dimasi@ljhadelaidemetro.com.au](mailto:jessica.dimasi@ljhadelaidemetro.com.au)

**LJ Hooker St Peters (08) 8362 8008**

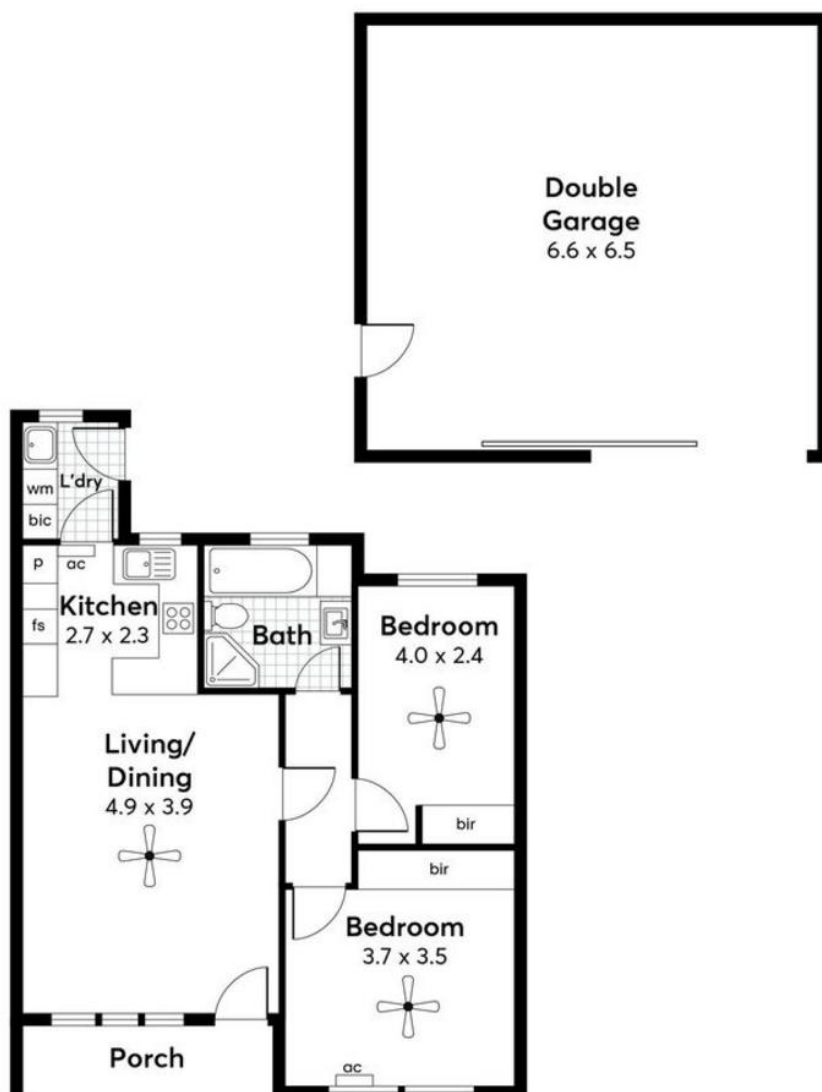
2a Portrush Road, PAYNEHAM SA 5070

[stpeters.ljhooker.com.au](http://stpeters.ljhooker.com.au) | [stpeters@ljhadelaidemetro.com.au](mailto:stpeters@ljhadelaidemetro.com.au)



**Disclaimer:** All information contained therein is gathered from relevant third parties sources. We cannot guarantee or give any warranty about the information provided. Interested parties must rely solely on their own enquiries.

**LJ Hooker St Peters  
(08) 8362 8008**



Area (estimate only)

Living	61.04m <sup>2</sup>
Porch	4.54 m <sup>2</sup>
Garage	42.90 m <sup>2</sup>
Total	108.48 m <sup>2</sup>

**HARRIS**

All information provided has been obtained from sources we believe to be accurate, however, we cannot guarantee the information is accurate and we accept no liability for any errors or omissions (including but not limited to a property's land size, floor plans and size, building age and condition). Interested parties should make their own enquiries and obtain their own legal and financial advice. RLA 226409