



Rossmore, 1/684-690 Twelfth Avenue

LOW MAINTENANCE AFFORDABLE FLAT

LJ Hooker Leppington | Austral presents an easy to maintain flat, suitable for singles and couples.

Featuring the following:

- Open plan studio
- Full bathroom recently renovated
- Kitchenette with storage space
- Outdoor yard with clothesline
- Secure parking

Pets considered on application

How to apply: All attendees must be registered to inspect the property, once viewed you



Disclaimer: All information contained therein is gathered from relevant third parties sources. We cannot guarantee or give any warranty about the information provided. Interested parties must rely solely on their own enquiries.



For Lease
Please Call

View
ljhooker.com.au/11H2HCV

Contact
Yvette Youkhana
0499 599 156
rentals.leppington@ljhooker.com.au

LJ Hooker Leppington | Austral
(02) 9606 4311

will receive a link via email and PIN code to complete the application process

Please be aware that if you do not request a booking time, you will not be notified of any open homes or cancellations.

More About this Property

Property ID	11H2HCV
Property Type	Flat
Including	Toilets (1)

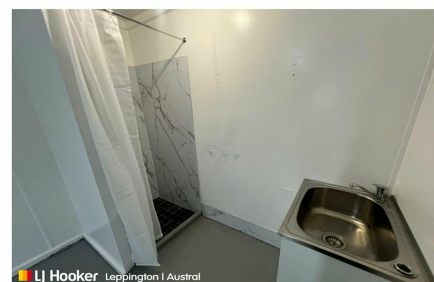
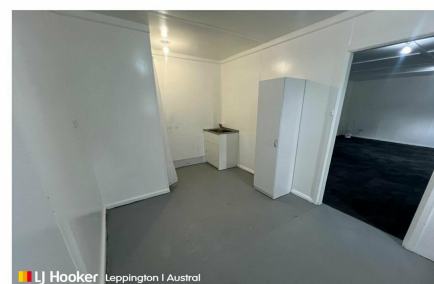
Yvette Youkhana 0499 599 156

Property Management Team Leader | rentals.leppington@ljhooker.com.au

LJ Hooker Leppington | Austral (02) 9606 4311

Leppington Village Shopping Centre, Shop GC1, 108-116 Ingleburn Road,
LEPPINGTON NSW 2179

leppington.ljhooker.com.au | leppington@ljhooker.com.au



Disclaimer: All information contained therein is gathered from relevant third parties sources.

We cannot guarantee or give any warranty about the information provided. Interested parties must rely solely on their own enquiries.

**LJ Hooker Leppington | Austral
(02) 9606 4311**