



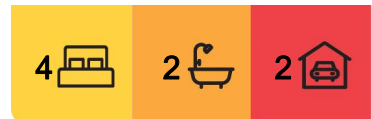
Roseville, 3 Acacia Lane

A Full Brick Beauty, Only 900 Meters to Chatswood Chase

Ideally located on the premium East side, this full brick family home on level land offers the best of both worlds for versatile urban living and idyllic family life, formal and informal spaces with all the comforts of home, offering a superb sense of serenity and privacy.

Classically inspired interiors are naturally bathed in sunlight adding an element of simplicity to everyday living with a flexible dual level floorplan. Easy flow interiors and a modern design boasting a spacious kitchen with Granite bench tops and extensive breakfast bar with European appliances.

It is just minutes to Chatswood and Roseville stations, in the Roseville Public



For Lease

Please Call

View

ljhooker.com.au/6AWHJX

Contact

Kenny Gong

0456 887 000

kgong@ljhookergordon.com.au



LJ Hooker Gordon
(02) 9496 8000

Disclaimer: All information contained therein is gathered from relevant third parties sources. We cannot guarantee or give any warranty about the information provided. Interested parties must rely solely on their own enquiries.

School and Killara High catchments, close to Willoughby Girls, Our Lady of Dolours, Roseville Infants/Primary, Roseville Ladies College, St Pius, Beauchamp Park and Chatswood shops.

- Four substantial bedrooms, main with ensuite
- Spacious formal lounge with with new carpet
- Large family room with easy flow out to the fully fenced garden
- Two large full bathrooms
- Laundry with built in cupboards
- Ducted reverse cycle airconditioning
- Bricked paved driveway with double lock up garage
- Ample storage and linen cupboard
- Two bathrooms, one with spa, plus a powder room
- Garden maintenance included

Available Now!

DISCLAIMER: All information contained herein is gathered from sources that we believe reliable. We have no reason to doubt its accuracy, however we cannot guarantee it. This information is not to be used in formalising any decision nor used by nor used by a third party without the expressed written permission of LJ Hooker Gordon.

More About this Property

Property ID 6AWHJX

Property Type House

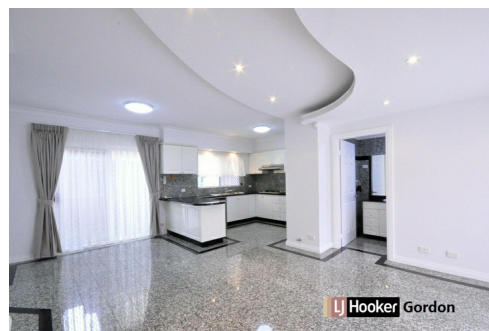
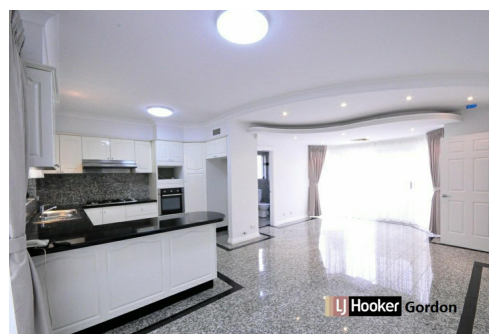
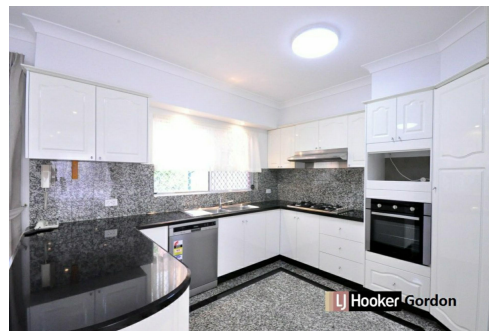
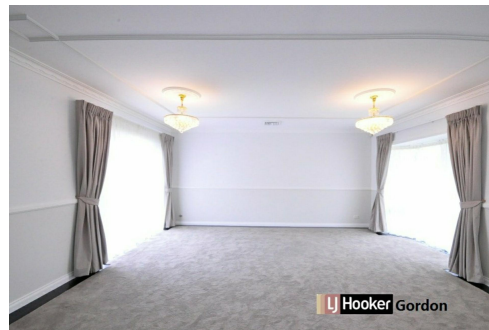
Kenny Gong

Managing Director | Sales Executive | kgong@ljhookergordon.com.au

LJ Hooker Gordon (02) 9496 8000

Shop 1, 777-779 Pacific Highway, GORDON NSW 2072

gordon.ljhooker.com.au | gordon@ljh.com.au



LJ Hooker Gordon
(02) 9496 8000

Disclaimer: All information contained therein is gathered from relevant third parties sources. We cannot guarantee or give any warranty about the information provided. Interested parties must rely solely on their own enquiries.