



A1004/433-439 Princes Highway, Rockdale

2 🏠 2 🚿 1 🚗

## Luxury and Convenience

Elevated on level 10 with a desirable easterly aspect, this luxury apartment captures stunning panoramic views across Botany Bay and the city skyline. Enjoy Rockdale's vibrant retail culture with local shops, restaurants, Rockdale library and transport all at your doorstep.

- Generous 101sqm floorplan encouraging open-plan living, light filled interiors and a desirable indoor/outdoor flow.
- Versatile kitchen area featuring stone bench-tops, gas cooking and dishwasher.
- Each bedroom is generously proportioned and equipped with built-in wardrobes, the master bedroom features a luxurious ensuite for added privacy and convenience.
- Enjoy access to the sun-lit balcony from both the living area and the master bedroom.
- Split system air conditioning in living area and master bedroom; internal laundry with dryer.
- Security car space and storage cage in basement
- Communal rooftop area with barbeque facilities and children's play area, further capturing a lovely district panorama.

For further details or to arrange an inspection please contact LJ Hooker Rockdale on 9597 6144.

### FOR RENT

Please Call

### AGENTS

Matthew Petrevski  
0401 610 995  
matthew.petrevski@ljhooker.com.au

### AGENCY

LJ Hooker Rockdale  
(02) 9597 6144

All information contained therein is gathered from relevant third parties sources.  
We cannot guarantee or give any warranty about the information provided.  
Interested parties must rely solely on their own enquiries.

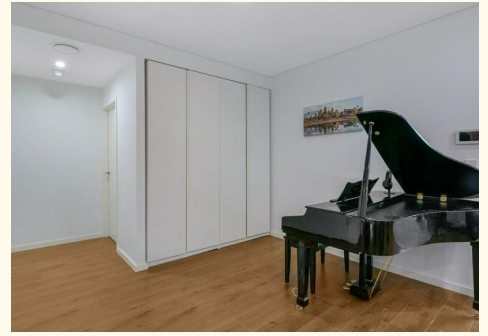
 **LJ Hooker**

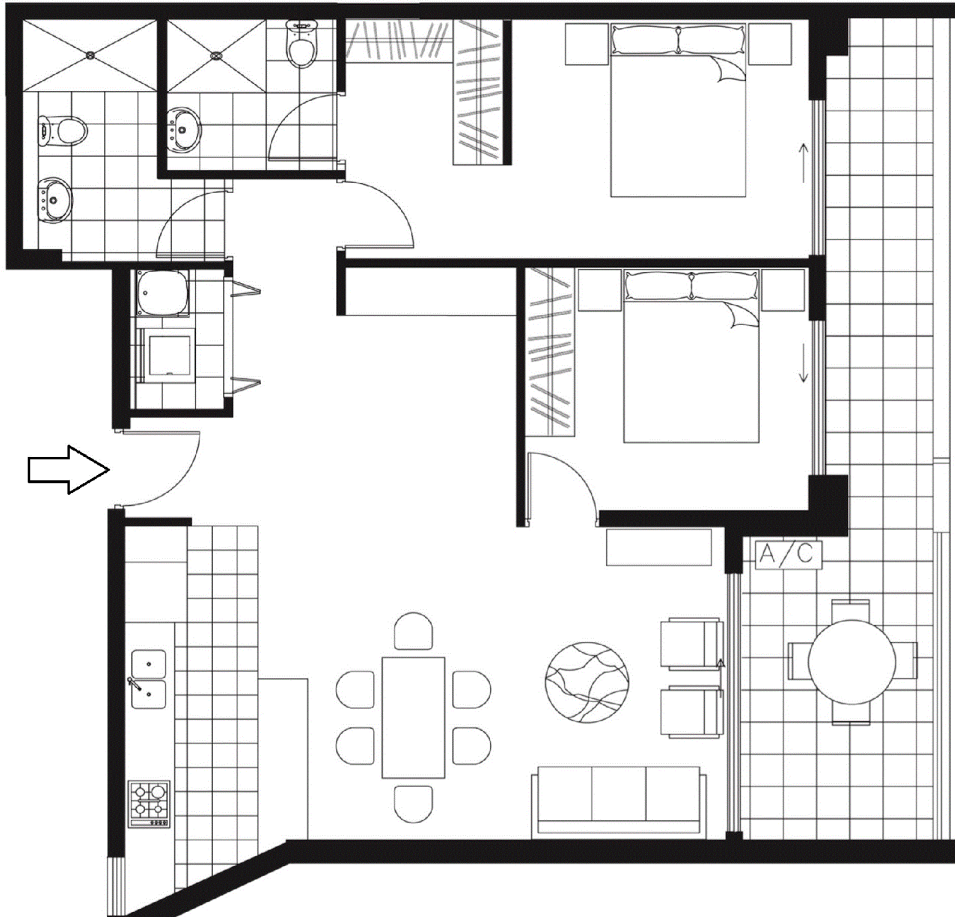
## MORE DETAILS

Property ID                    5N9HS3  
Property Type                Apartment

**Matthew Petrevski 0401 610 995**  
Senior Property Executive | [matthew.petrevski@ljhooker.com.au](mailto:matthew.petrevski@ljhooker.com.au)

**LJ Hooker Rockdale (02) 9597 6144**  
426 Princes Highway, ROCKDALE NSW 2216  
[rockdale.ljhooker.com.au](http://rockdale.ljhooker.com.au) | [rockdale@ljhooker.com.au](mailto:rockdale@ljhooker.com.au)





NOTE: All information herein is gathered from all sources we believe to be reliable. However we cannot guarantee its accuracy and interested parties should rely on their own enquiries.



## A1004/433-439 PRINCES HIGHWAY ROCKDALE