

## Rivervale, 116/3 Homelea Court

### PREMIER APARTMENT WITH PANORAMIC VIEWS

2 2 1

This executive apartment is in a fantastic central location and perfect for those seeking a 'lock-up and leave' lifestyle!

This particular unit is a corner apartment, with panoramic views from the wrap-around oversized entertainers balcony. This property features open plan living, dining and kitchen areas, spacious bedrooms each with their own balcony access, and secure parking for one car.

The Spring View Towers complex boasts luxury amenities, including but not limited to the expansive pool and additional sauna facilities, common lounge and games room, well-equipped gym, and secure entry to both the lobby and the parking facilities.

#### Key Features:

- \* Two bedrooms, master with walk-in robe and additional bedroom with built-in robe



**Disclaimer:** All information contained therein is gathered from relevant third parties sources. We cannot guarantee or give any warranty about the information provided. Interested parties must rely solely on their own enquiries.

**For Lease**  
Please Call

**View**  
[ljhooker.com.au/5EH5FFB](http://ljhooker.com.au/5EH5FFB)

**LJ Hooker Victoria Park | Belmont  
(WA)  
(08) 9473 7777**

- \* Two bathrooms, secondary bathroom has a bathtub and shower
  - \* Internal laundry facilities within the unit
  - \* Stone bench tops to kitchen
  - \* Stainless steel kitchen appliances
  - \* Electric stove and oven
  - \* Dishwasher
  - \* Split system air-conditioning
  - \* Panoramic views
  - Sorry, no pets
  - Unfurnished
  - 6 or 12 months initial lease term
- \*\*\* Please note for viewings; the complex is secure, please arrive 5 minutes early and wait out the front for our agent to collect you. Please try to be on time as once our agent has taken others up to the apartment it can be difficult to return to the gate to collect you. If you arrive within the last 5 minutes of the booking time, we may not be able to show you through due time restrictions and subsequent viewings at other properties.

Would you like to inspect this property? Please register your details by requesting/booking an inspection. You will be sent details of available viewing times or be notified as soon as a time becomes available.

You must book/register for a specific viewing time, otherwise we will not be able to contact you should the viewing be cancelled, or the time changed.

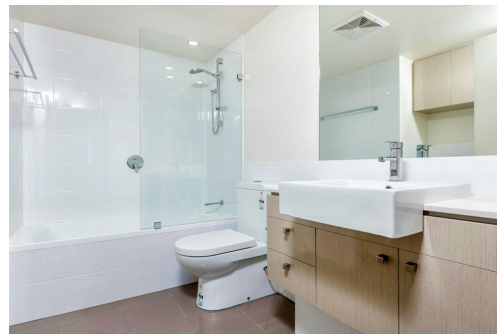
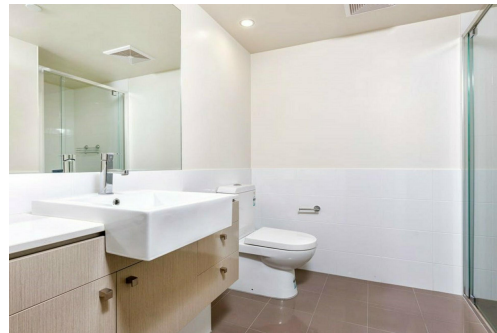
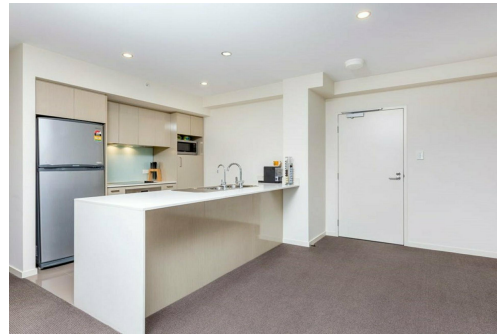
Alternatively, call our office on 08 9473 7777.

\*\*\* ARE YOU A LANDLORD? If you are looking for property management services, we would love to hear from you. Contact our Business Development Manager Barry on 0407 722 867 or [barry@ljhvicpark.com.au](mailto:barry@ljhvicpark.com.au) for a no-obligation and confidential conversation.

## More About this Property

Property ID	5EH5FFB
Property Type	Apartment
Including	Ensuite Air Conditioning Dishwasher Built-in-Robes

**LJ Hooker Victoria Park | Belmont (WA) (08) 9473 7777**  
 288 Albany Highway, VICTORIA PARK WA 6100  
[victoriapark-belmontwa.ljhooker.com.au](http://victoriapark-belmontwa.ljhooker.com.au) | [reception@ljhvicpark.com.au](mailto:reception@ljhvicpark.com.au)



**Disclaimer:** All information contained therein is gathered from relevant third parties sources. We cannot guarantee or give any warranty about the information provided. Interested parties must rely solely on their own enquiries.

**LJ Hooker Victoria Park | Belmont (WA) (08) 9473 7777**