

14 Cruikshank Crescent, Riverstone

Stunning Home , Great Location!

Sara McCrimmon and the team at LJ Hooker are proud to present 14 Cruikshank Crescent for rent. This is a great home with quality finishes throughout. Some of the many features of this home includes:

- Spacious master bedroom with ensuite and wardrobe
- Additional bedrooms are spacious with built ins
- No carpets - floorboards or tiles throughout
- 6.6kW solar panels for savings throughout the year
- Gourmet kitchen features gas cooking, dishwasher, stone benchtop and walk in pantry
- Study/office space downstairs
- Low maintenance backyard
- Single remote access garage with internal access


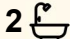
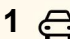
We look forward to seeing you at our next open home!

How to Apply: Click apply and put your application through Ignite. Please ensure you provide, ID and proof of income so we can process your application without delays.

Disclaimer:

All information contained herein is gathered from sources we deem to be reliable. However, we cannot guarantee its accuracy, and interested persons should rely on their own enquiries. Images &

All information contained therein is gathered from relevant third parties sources. We cannot guarantee or give any warranty about the information provided. Interested parties must rely solely on their own enquiries.

4  2  1 

FOR RENT
\$795

VIEW
By Appointment

AGENTS
Alex Thompson
02 9157 4077

AGENCY
LJ Hooker Schofields | Riverstone
02 9157 4077



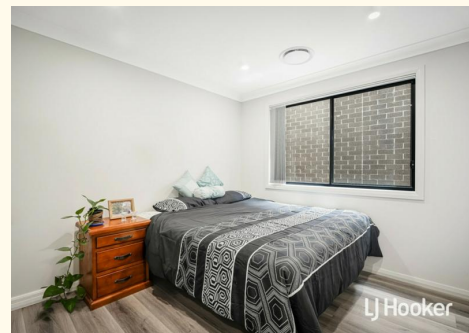
Furnishing are for illustrative purposes only and do not represent the final product or finishes. For inclusions refer to the inclusions in the contract of sale. Areas are approximate. All parties are advised to seek full independent legal and professional advice and investigations prior to any action or decision.

MORE DETAILS

Property ID	58RHXY
Property Type	House
Including	Air Conditioning Courtyard Dishwasher Solar Panels

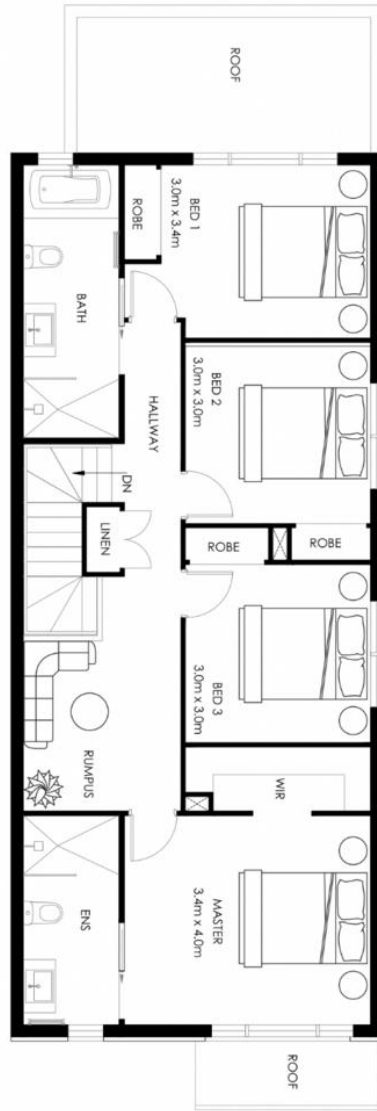
Alex Thompson 02 9157 4077
Digital Assistant

LJ Hooker Schofields | Riverstone 02 9157 4077
Shop 35, 111 Railway Terrace, SCHOFIELDS NSW 2762
schofields.ljhooker.com.au | schofields@ljhooker.com.au





GROUND FLOOR PLAN



FIRST FLOOR PLAN

 4	 2.5	 1	TOTAL: 200m²
---	---	---	--------------------------------

All imagery and photography are used for illustration purposes only and may depict fixtures and features that are not supplied by the Castle Group Pty, unless otherwise specified. There may include items such as furnishings, landscaping, retaining walls, front fencing, balconies, lighting, tiling, decorative finishes and facade upgrades. Please contact Castle group for a full listing of inclusions. Note: Castle group has the right to review inclusions and pricing packages at any time and will be subject to all Statutory & Development approval.